



Pinwheel Ripple Vase

 **ChrisTheViolaNerd**

[VIEW IN BROWSER](#)

updated 19. 4. 2022 | published 19. 4. 2022

Summary

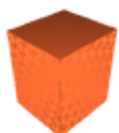
A decorative vase.

[Household](#) > [Home Decor](#)

Tags: [cactusplanter](#) [container](#) [containers](#) [decor](#) [decoration](#) [decorationvase](#) [decorative](#) [deskplanter](#) [flower](#) [flowerbox](#) [flowerplanter](#) [flowerpot](#) [flowers](#) [flowervase](#) [flowervases](#) [home](#) [homedecor](#) [homedecoration](#) [homeoffice](#) [indoorplanter](#) [outdoorplanter](#) [pinwheel](#) [plant](#) [planter](#) [planterpot](#) [planters](#) [plantpot](#) [vase](#) [vases](#)

I printed this with 3 walls, no infill, no top layers, and a .2mm layer height.

Model Files



[pinwheel-vase.stl](#)



The Author has not uploaded any print files.
Try to search in [User print files](#) section or generate and upload your own.

License



This work is licensed under a
Creative Commons (4.0 International License)

Attribution-ShareAlike

-
- ✗ | Sharing without ATTRIBUTION
 - ✓ | Remix Culture allowed
 - ✓ | Commercial Use
 - ✓ | Free Cultural Works
 - ✓ | Meets Open Definition