



Gillette Fusion Mount



PrintCompact

[VIEW IN BROWSER](#)

updated 6. 1. 2024 | published 6. 1. 2024

Summary

Is your shave just lying around in the cupboard? Then we have a solution for you. A wall mount for your Gillette Fusion.



1.04 hrs



2 pcs



0.20 mm



0.40 mm



PLA



12 g



Prusa MINI /
MINI+

[Household](#) > [Bathroom](#)

Tags: [mount](#) [bathroom](#) [bathroomorganizer](#)

[bathroomaccessories](#)

[gillette](#)

[gillettefusion](#)

[shaver](#)

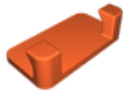
[shaverholder](#)

We have two versions for you here. One is the bracket without holes, here you simply use double-sided adhesive tape to attach the bracket to your cupboard.

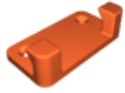
However, if you want to be on the safe side, you can download the file with drill holes for countersunk screws and screw the bracket into place.

A little tip: we have been using this double-sided adhesive tape for several years: <https://amzn.eu/d/d3S3fjZ>

Model files



gillette-fusion-mount.stl



gillette-fusion-mount-screw.stl

Print files



gillette-fusion-mount_04n_02mm_pla_mini_30m.gcode

🌀 PLA 📏 0.40 mm 📐 0.20 mm ⌚ 0.51 hrs ⚖️ 6 g 🖨️ Prusa MINI / MINI+



gillette-fusion-mount-screw_04n_02mm_pla_mini_32m.gcode

🌀 PLA 📏 0.40 mm 📐 0.20 mm ⌚ 0.53 hrs ⚖️ 6 g 🖨️ Prusa MINI / MINI+

License ©

This work is licensed under a
[Creative Commons \(4.0 International License\)](#)



Attribution-NonCommercial

- ✗ | Sharing without ATTRIBUTION
- ✓ | Remix Culture allowed
- ✗ | Commercial Use
- ✗ | Free Cultural Works
- ✗ | Meets Open Definition

