

Honeycomb Display Shelf (No Supports Required)



Ryan Millar

[VIEW IN BROWSER](#)

updated 3. 12. 2021 | published 3. 12. 2021

Summary

Two versions of a small display shelf to show off your favourite prints!



29.66 hrs



5 pcs



0.20 mm



0.40 mm



PLA



224 g



Prusa
MK3/S/S+

[Art & Design](#) > [Wall-mounted](#)

Tags: [display](#) [shelf](#) [wall](#) [wallmount](#) [honeycomb](#) [shelves](#)
[wallhanger](#) [hangingshelf](#) [hangingshelves](#)

Two versions of the a display shelf that have customizable “grills” (or support walls).

Notes:

- If printing this on a Prusa MK3S+, then the .stl files **MUST BE SCALED** to 85%.
- The grills were designed to snap in place without the need of glue.
- Version 1 of the shelf has a single Grill file that works on both the left and right sides.

- Version 2 of the shelf has unique Grill files unique to each side. Make sure the honeycomb patterns line up when inserting the Grills. Minimal force should be required.

These were originally designed to cover up some old dry wall reinforcers. It looks great when there are several hung together.

Enjoy!

Model files



honeycombdisplayshelf_v1_grill.stl



honeycombdisplayshelf_frame_v2.stl



honeycombdisplayshelf_v2_grill_left.stl



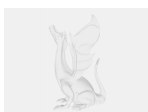
honeycombdisplayshelf_v2_grill_right.3mf



honeycombdisplayshelf_v1_grill.3mf



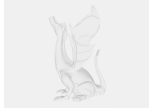
honeycombdisplayshelf_v2_grill_left.3mf



honeycombdisplayshelf_v1_grill.rsdoc



honeycombdisplayshelf_frame_v1.rsdoc



honeycombdisplayshelf_v2_grill_left.rsdoc



honeycombdisplayshelf_frame_v2.3mf



honeycombdisplayshelf_v2_grill_right.stl



honeycombdisplayshelf_frame_v1.3mf



honeycombdisplayshelf_frame_v1.stl



honeycombdisplayshelf_frame_v2.rsdoc



honeycombdisplayshelf_v2_grill_right.rsdoc

Print files



honeycombdisplayshelf_v1_grill_1h5m.gcode

⚙️ PLA ⚙️ 0.40 mm ⚙️ 0.20 mm ⌚ 1.08 hrs ⚖️ 6 g 🖨️ Prusa MK3/S/S+



honeycombdisplayshelf_v2_grill_left_1h13m.gcode

PLA 0.40 mm 0.20 mm 1.22 hrs 7 g Prusa MK3/S/S+



honeycombdisplayshelf_v2_grill_right_1h12m.gcode

PLA 0.40 mm 0.20 mm 1.19 hrs 7 g Prusa MK3/S/S+



displayshelf_frame_v1_12h59m.gcode

PLA 0.40 mm 0.20 mm 12.98 hrs 102 g Prusa MK3/S/S+



displayshelf_frame_v2_13h11m.gcode

PLA 0.40 mm 0.20 mm 13.19 hrs 103 g Prusa MK3/S/S+

License

This work is licensed under a
Creative Commons (4.0 International License)



Attribution—Noncommercial—Share Alike

- ✗ | Sharing without ATTRIBUTION
- ✓ | Remix Culture allowed
- ✗ | Commercial Use
- ✗ | Free Cultural Works
- ✗ | Meets Open Definition