



Mountains



mishkin2

[VIEW IN BROWSER](#)

updated 31. 1. 2022 | published 31. 1. 2022

Summary

These files are designed for the most part for laser cutting.

[Art & Design](#) > [Wall-mounted](#)

These files are designed for the most part for laser cutting. But if you are not confused by the small size, you can also print them on a 3D printer.

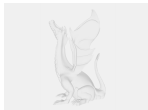
To increase the size, you can cut these models into pieces, print them separately and then connect them with **glue**.

STL files are ready for printing on a 3D printer with a maximum print area size of 210x200. If your table size is larger, you can easily scale it to fit your size. To make a large-sized version of metal, wood or plastic, as in the picture, you will need the help of a laser cutter. To do this, I added dxf and svg files.

Wall mounting can be done using wall_mounting. It must be printed additionally and glued with **glue** to the main decor. Then fix it on the wall with nails or screws or use **double-sided tape**.

To achieve the wow effect, you need to place an **LED strip** on the back of the decor.

Model files

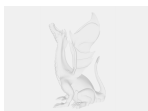


mountains.dxf



mountains.stl

Other files



mountains.svg

License ©

This work is licensed under a
Creative Commons (4.0 International License)



Attribution-NonCommercial

- ✗ | Sharing without ATTRIBUTION
- ✓ | Remix Culture allowed
- ✗ | Commercial Use
- ✗ | Free Cultural Works
- ✗ | Meets Open Definition