

## Sharpie Lego Hand Holder



ByteSlinger

[VIEW IN BROWSER](#)

updated 2. 8. 2022 | published 2. 8. 2022

### Summary

A Lego hand perfectly sized to hold a Sharpie pen that can be clipped onto any surface using either a magnet or a screw.

[Household](#) > [Office](#)

Tags: [holder](#) [lego](#) [magnet](#) [pen](#) [screw](#) [sharpie](#)

This is a Lego hand perfectly designed to hold a Sharpie pen. You can choose between a magnetic one and one which can slot onto a screw head.

Here's an example of the magnetic one being used:

### Printing Your Lego Hand

- Layer Height: 0.1mm
- Infill: 15 - 30%
- Support: Yes for the hand, no for the cuffs (See below)

Print the hand part upside down (With the flatter side of the hand on the print bed, and use support material for the wrist and cross shaped mount parts).

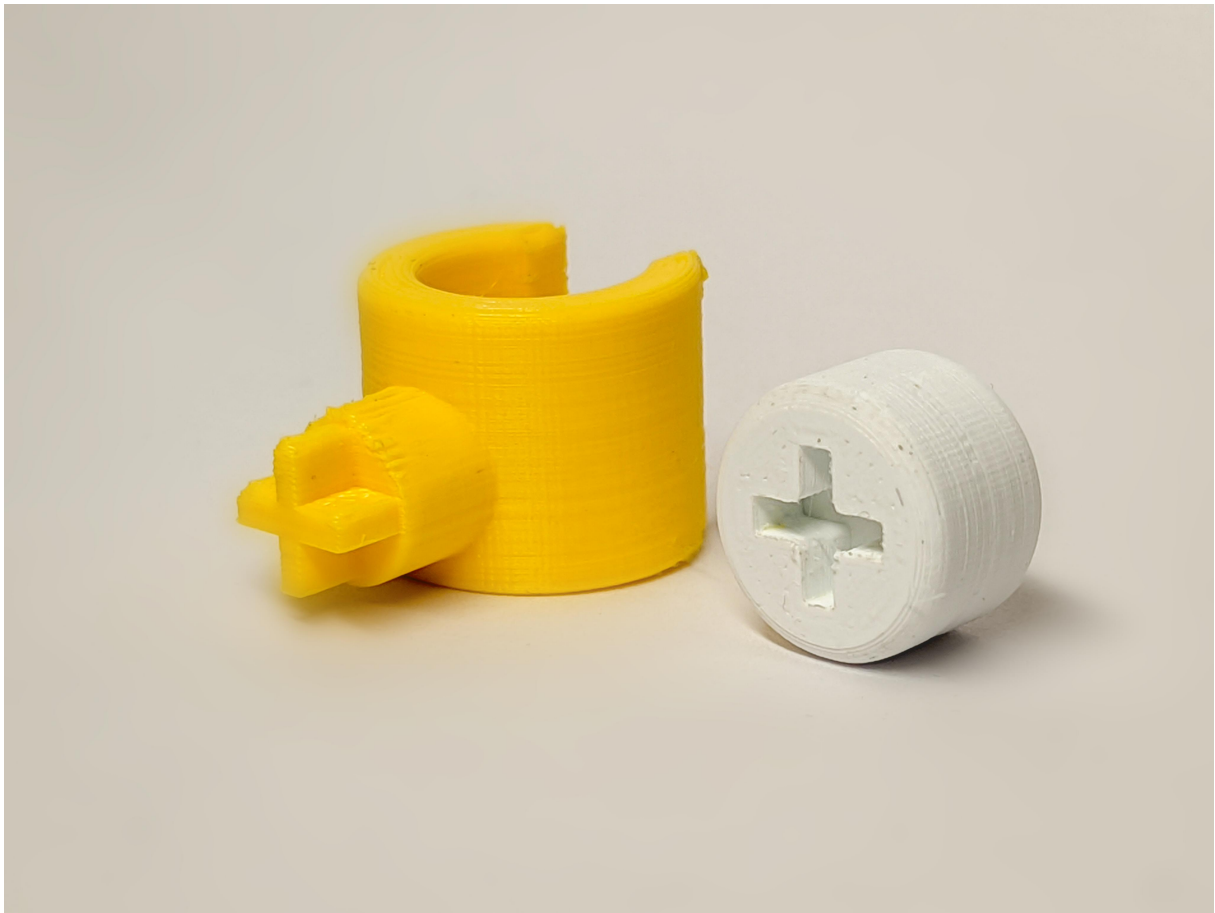
The cuffs can both be printed with the X part facing up and without support material. There are overhangs inside but they have been designed

to bridge easily and you shouldn't have any issues with these without support material.

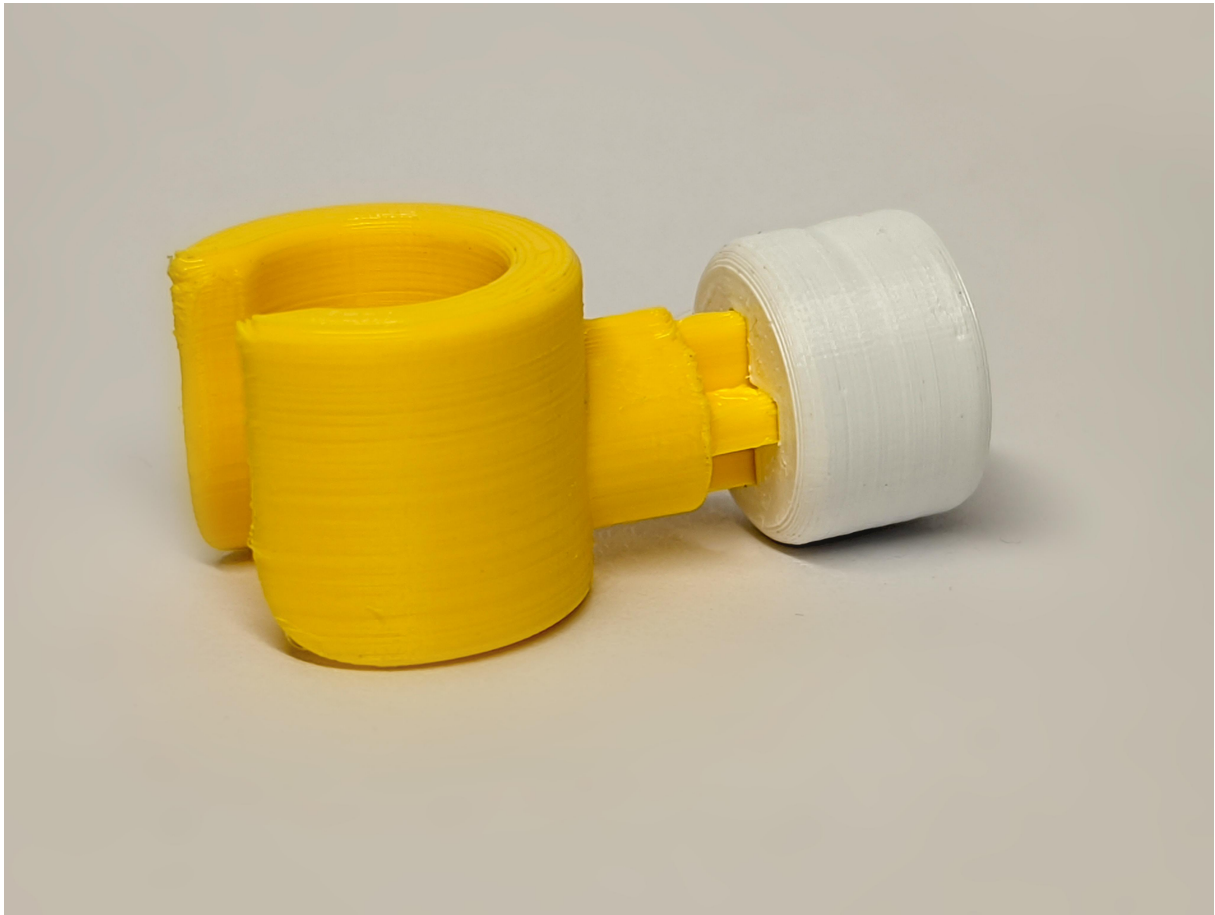
### **Building Your Lego Hand**

The Lego hand prints in 2 pieces. A hand, and the Cuff. There are two versions of the cuff piece, one for use with magnets and one for use with screws.

The hand part has a cross extrusion at the back which slots into a cross recess on the front of the cuff.



Simply slot the hand into the cuff to connect it. It should slide in easily and grip well to remain in place.



### **Magnet Version**

The magnetic version is designed to use an **8x3mm magnet like these**.

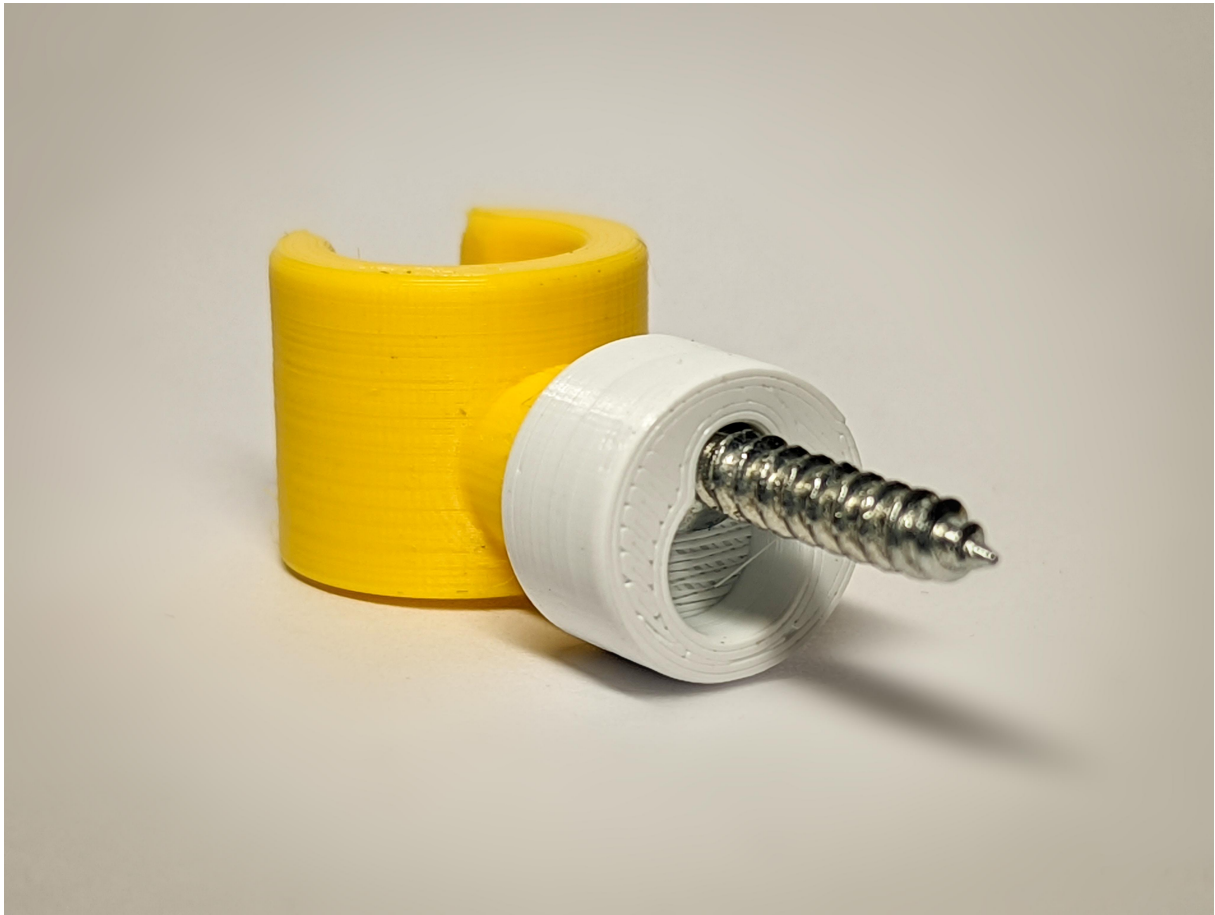
With this one, you should be able to push the magnet into the rear of the Cuff part and it should be held in there nicely with no need for glue etc.



### **Screw Version**

If you'd prefer to mount our hand onto a wall or piece of furniture with a screw, this is designed to be used with any screw with a head size up to 6.95mm diameter and 2mm depth, and with a screw thickness of up to 3.95mm.

Once printed, simply slot the screw into the wider area on the back of the cuff, and slide the cuff down to lock it in place.



If you enjoy my designs, please make sure to check out and subscribe to my YouTube channel at [www.3DRev.uk](http://www.3DRev.uk) where I post about my designs, reviews and tutorials for 3D Printing, Cameras and Drones.

## Model files



STLs

3 files



**magnet-cuff.stl**



**screw-cuff.stl**



hand.stl



PrusaSlicer 3mf Projects

3 files



screw-cuff.3mf



magnet-cuff.3mf



hand.3mf

## License

This work is licensed under a  
[Creative Commons \(4.0 International License\)](https://creativecommons.org/licenses/by-nc/4.0/)



**Attribution-NonCommercial**

- ✗ | Sharing without ATTRIBUTION
- ✓ | Remix Culture allowed
- ✗ | Commercial Use
- ✗ | Free Cultural Works
- ✗ | Meets Open Definition