



# Milk Crate Flower Pot



BittenZombie55

[VIEW IN BROWSER](#)

updated 19. 6. 2022 | published 19. 6. 2022

## Summary

A flower pot that resembles a milk crate. It is 4.5in x 4.5in x 4.5in



15.30 hrs



1 pcs



0.20 mm



0.40 mm



PET



181 g

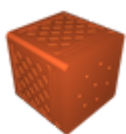


Prusa  
MK3S/S+ &  
MMU2S

[Household](#) > [Outdoor & Garden](#)

Tags: [flowerpot](#) [plant](#) [plantpot](#)

## Model files



milkcratepot.stl



**milkcratepot.3mf**

## Print files



**milkcratepot\_02mm\_petg\_mk3smmu2s\_15h18m.gcode**

PET 0.40 mm 0.20 mm 15.30 hrs 181 g

Prusa MK3S/S+ & MMU2S

## License

This work is licensed under a  
[Creative Commons \(4.0 International License\)](#)



**Attribution—Noncommercial—Share Alike**

- 
- ✗ | Sharing without ATTRIBUTION
  - ✓ | Remix Culture allowed
  - ✗ | Commercial Use
  - ✗ | Free Cultural Works
  - ✗ | Meets Open Definition