

Robot desk organizer hinged



RestoreDoctor

[VIEW IN BROWSER](#)

updated 18. 5. 2023 | published 18. 5. 2023

Summary

Robot desk organizer hinged

[Hobby & Makers](#) > [Organizers](#)

Tags: [organizer](#) [hinge](#) [robotics](#) [robot](#) [deskorganizer](#) [desk](#)
[pencilholder](#) [hinged](#) [pencil](#)

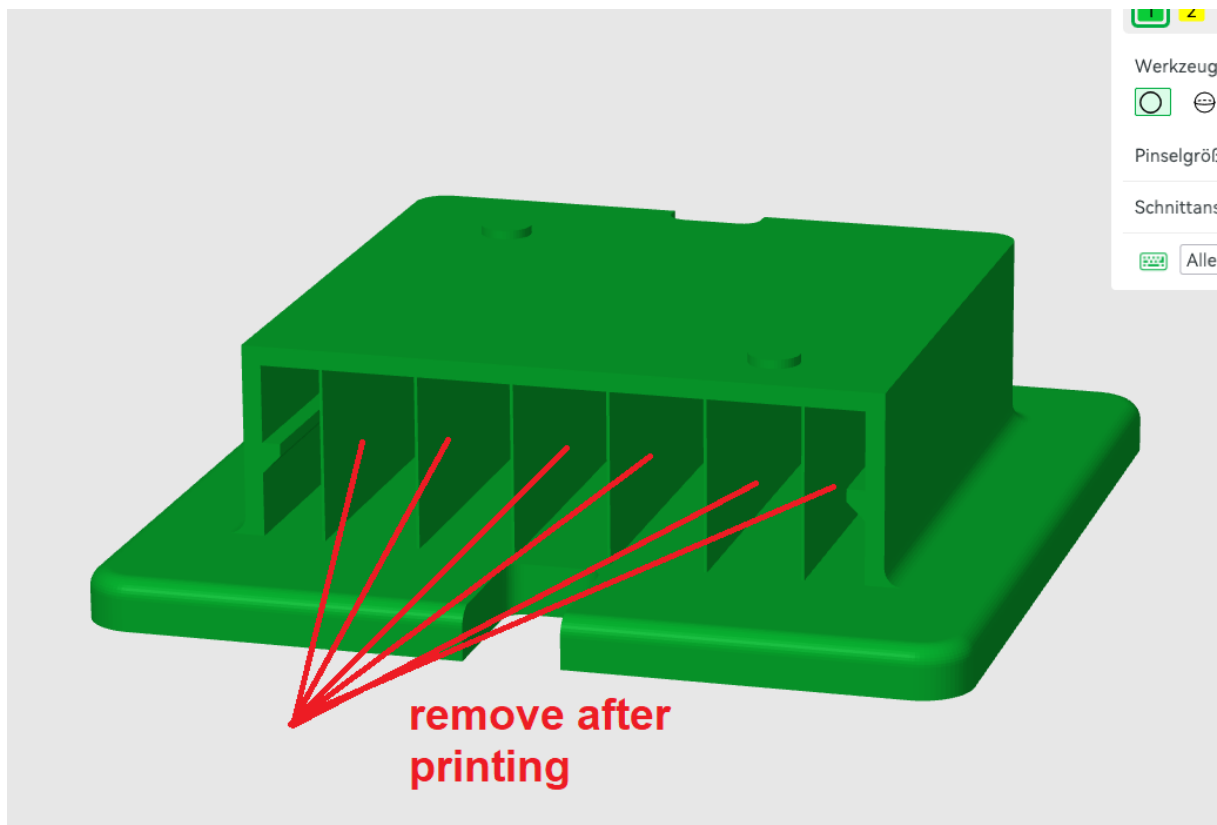
Settings:

- 0.20mm Standard
- support needed at body and drawer part
- **PLA / PETG**

Hardware:

- 2pcs. M3 x 10mm Cylinder Head (**hands**)
- 2pcs. M6 x 10mm Cylinder Head (**arms**)
- 2pcs. M6 x 35 mm Cylinder Head (**hinge**)

The supports for the drawer must be removed from the FEETS after printing - see below



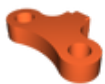
Model files



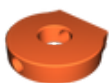
left-arm.stl



right-arm.stl



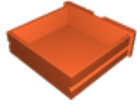
key.stl



hand.stl



feets.stl



drawer.stl



head.stl



body.stl

License

This work is licensed under a
[Creative Commons \(4.0 International License\)](https://creativecommons.org/licenses/by-nc-sa/4.0/)



Attribution—Noncommercial—Share Alike

- ✗ | Sharing without ATTRIBUTION
- ✓ | Remix Culture allowed
- ✗ | Commercial Use
- ✗ | Free Cultural Works
- ✗ | Meets Open Definition