



Robot Desk Organizer



RestoreDoctor

[VIEW IN BROWSER](#)

updated 14. 6. 2023 | published 14. 6. 2023

Summary

Robot Desk Organizer

[Hobby & Makers](#) > [Organizers](#)

Tags: [penorganizer](#) [organizer](#) [desk](#) [pen](#) [robot](#)
[deskorganizer](#)

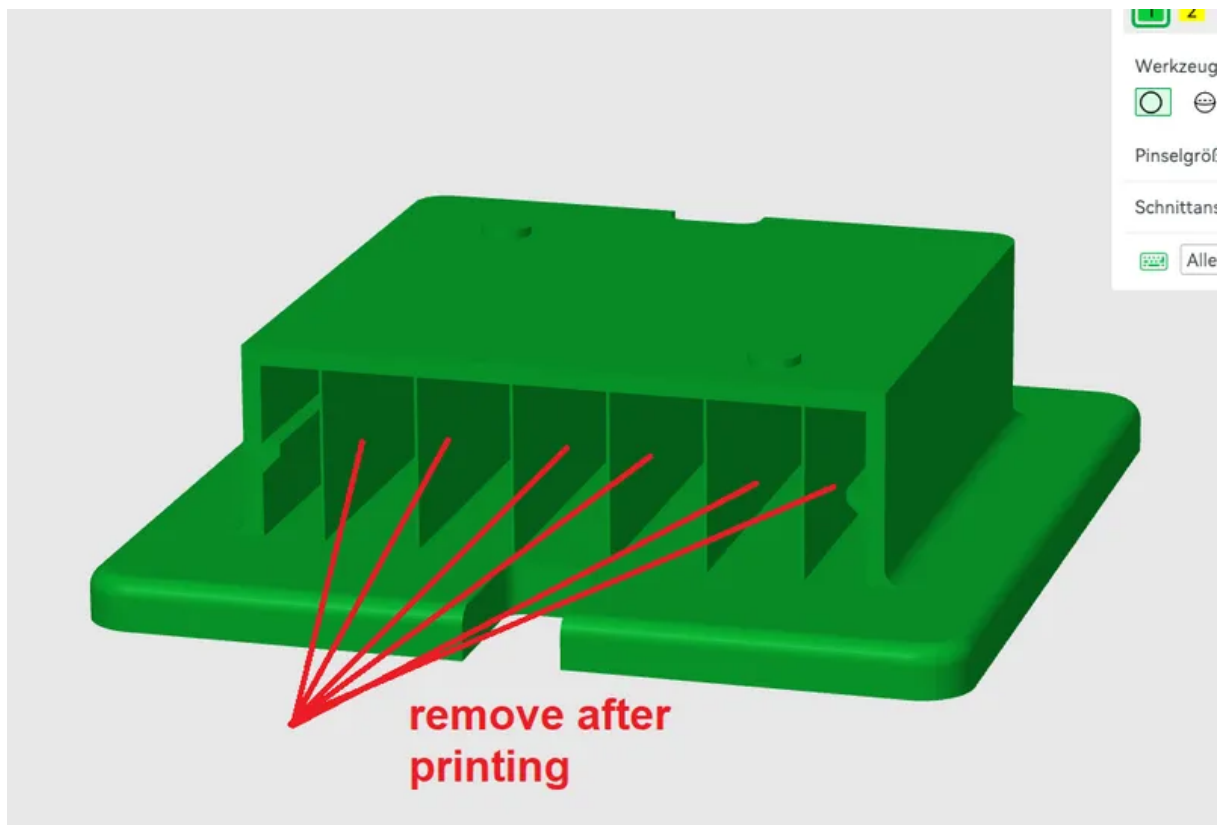
Settings:

- 0.20mm Standard
- support needed at body and drawer part
- **PLA / PETG**

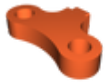
Hardware:

- 2pcs. M3 x 10mm Cylinder Head (**hands**)
- 2pcs. M6 x 10mm Cylinder Head (**arms**)
- 2pcs. M6 x 35 mm Cylinder Head (**hinge**)

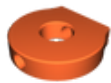
The supports for the drawer must be removed from the FEETS after printing - see below



Model files



key.stl



hand.stl



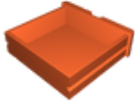
feets.stl



head.stl



body.stl



drawer.stl



right-arm.stl



left-arm.stl

Other files



484683-robot-desk-organizer-hinged-19b3bf3b-ae57-4b... .pdf

License

This work is licensed under a
[Creative Commons \(4.0 International License\)](#)



Attribution-ShareAlike

- ✗ | Sharing without ATTRIBUTION
- ✓ | Remix Culture allowed
- ✓ | Commercial Use
- ✓ | Free Cultural Works
- ✓ | Meets Open Definition

