



## Remote Holder Flexible Net Basket



Schnapsi

[VIEW IN BROWSER](#)

updated 6. 11. 2022 | published 6. 11. 2022

### Summary

A Remote Holder with a flexible net in a wall mount and a standing version.

[Household](#) > [Other House Equipment](#)

Tags: [flexible](#) [holder](#) [net](#) [remote](#)

So if you dont like the normal standart print and finished Remote Holders, maybe this one is something for you.

My Remote Holder is made of two different materials. The side and top panels in my case are made of PETG (you can use whatever you want) and the middle flexible net part is made of TPU.

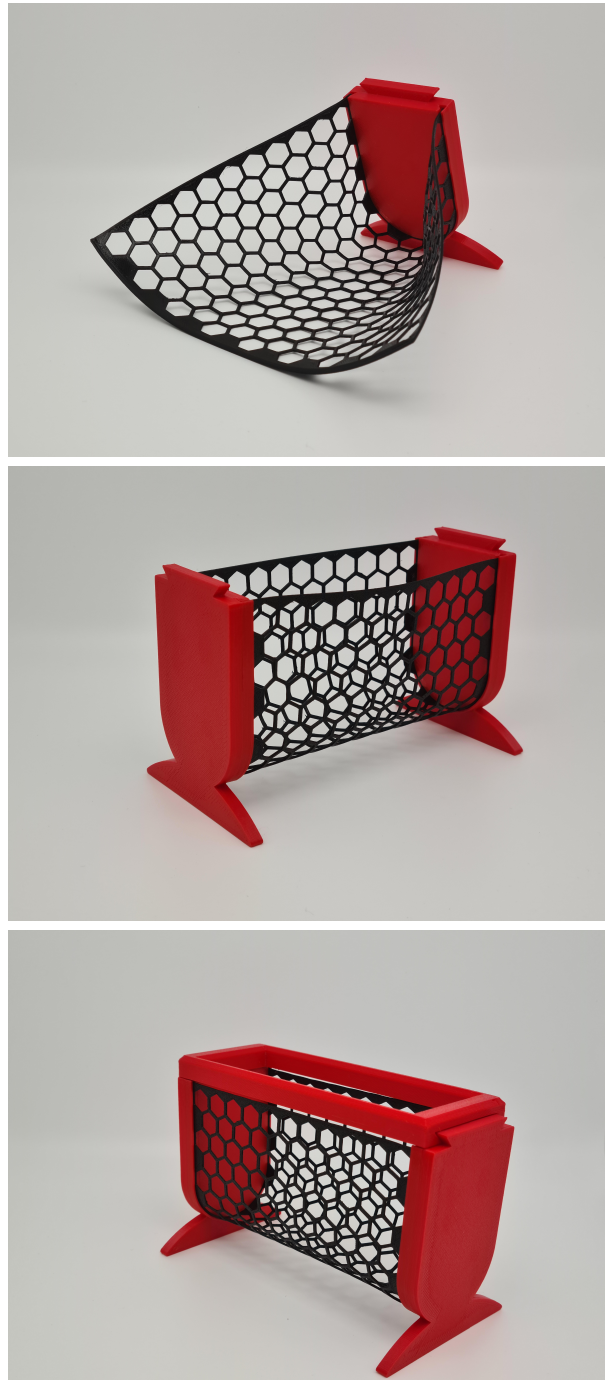
This design comes in a standing and a wall mount version.

On the wall hanger version you can use double sided tape to stick it on the wall or velcro to stick it on your couch or something. There is also a frame version with two mounting holes for screws.

Doesnt matter what version you prefer, every model is made of only 4 parts. 1 Topframe, 2 Side panels and 1 flexible Net.

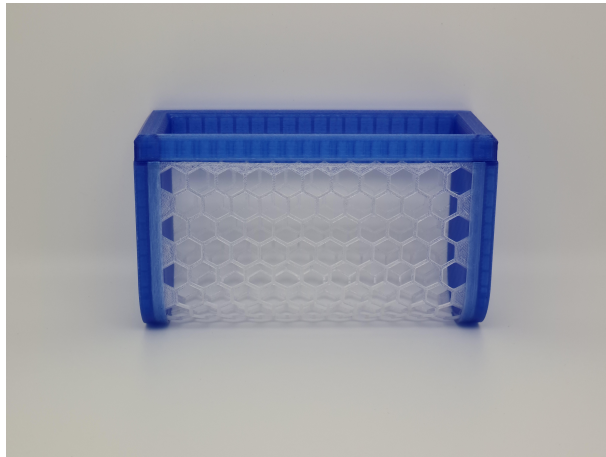
You dont need any screws or glue to but the parts together. First you need to slide the flexible net into the side panel. If the TPU is to sticky to slide

in, use a little bit of normal soap and rub in both ends of the TPU net. After that you should not have any problem to put the parts together. After the basket is finished, slide it into the outsides of the top frame and you are done.



The size of the framehole is 12x4cm, so its big enough for three big remotes, 4-5 smart tv remotes or other controlers you have.

My blue Remote Holder ist the wall hanger version without holes for double sidet tape or velcro.



My red one is the standing version.



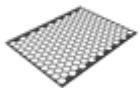
You can print all parts with a 0,6 or 0,4 nozzle. 25% infill should be fine.

Colors i used: PETG Transparent Blue, Transparent TPU semisoft and PETG Red, Black TPU semisoft.

Hope you like it.

Enjoy!

## Model files



**tpu-net.3mf**

---



**topframe-for-standing.3mf**

---



**side-panel-for-standing.3mf**

---



**topframe-for-tapemount.3mf**

---



**topframe-with-mounting-holes.3mf**

---



**side-panel-for-wallmount.3mf**

## License ©

This work is licensed under a  
[Creative Commons \(4.0 International License\)](https://creativecommons.org/licenses/by-nc-sa/4.0/)



**Attribution—Noncommercial—Share Alike**

---

- ✗ | Sharing without ATTRIBUTION
- ✓ | Remix Culture allowed
- ✗ | Commercial Use
- ✗ | Free Cultural Works
- ✗ | Meets Open Definition