

## Modular Coat Hanger System



The Swedish Maker

[VIEW IN BROWSER](#)

updated 13. 4. 2024 | published 13. 4. 2024

### Summary

A coat hanger system that is modular - the backboard can also be cut in wood and adjusted for what is necessary...

[Household](#) > [Office](#)

Tags: [hook](#) [hanger](#) [thingiverse](#)

A coat hanger system that is modular - the backboard can also be cut in wood and adjusted for what is necessary.

### Print Settings

#### Printer:

Sidewinder X1

#### Rafts:

No

#### Supports:

No

#### Resolution:

200

**Infill:**

20

**Filament:** Random PLA

Category: Organization

## Model files



**modernhook.stl**

---



**hook1.stl**

---



**longhook.stl**

---



**leftshelf.stl**

---



**rightshelf.stl**

---



**longhookwithtap.stl**

---



**longmodernhook.stl**

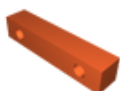
---



**shelf.stl**



**helmethook.stl**



**block.stl**



**centershelf.stl**

[Find source .stl files on Thingiverse.com](https://www.thingiverse.com)

## License ©



This work is licensed under a  
**Creative Commons (4.0 International License)**

**Attribution-NonCommercial**

- ✗ | Sharing without ATTRIBUTION
- ✓ | Remix Culture allowed
- ✗ | Commercial Use
- ✗ | Free Cultural Works
- ✗ | Meets Open Definition