



HIGH GARDENS - Stackable Plant Vases - Over 30 models + custom options



[VIEW IN BROWSER](#)

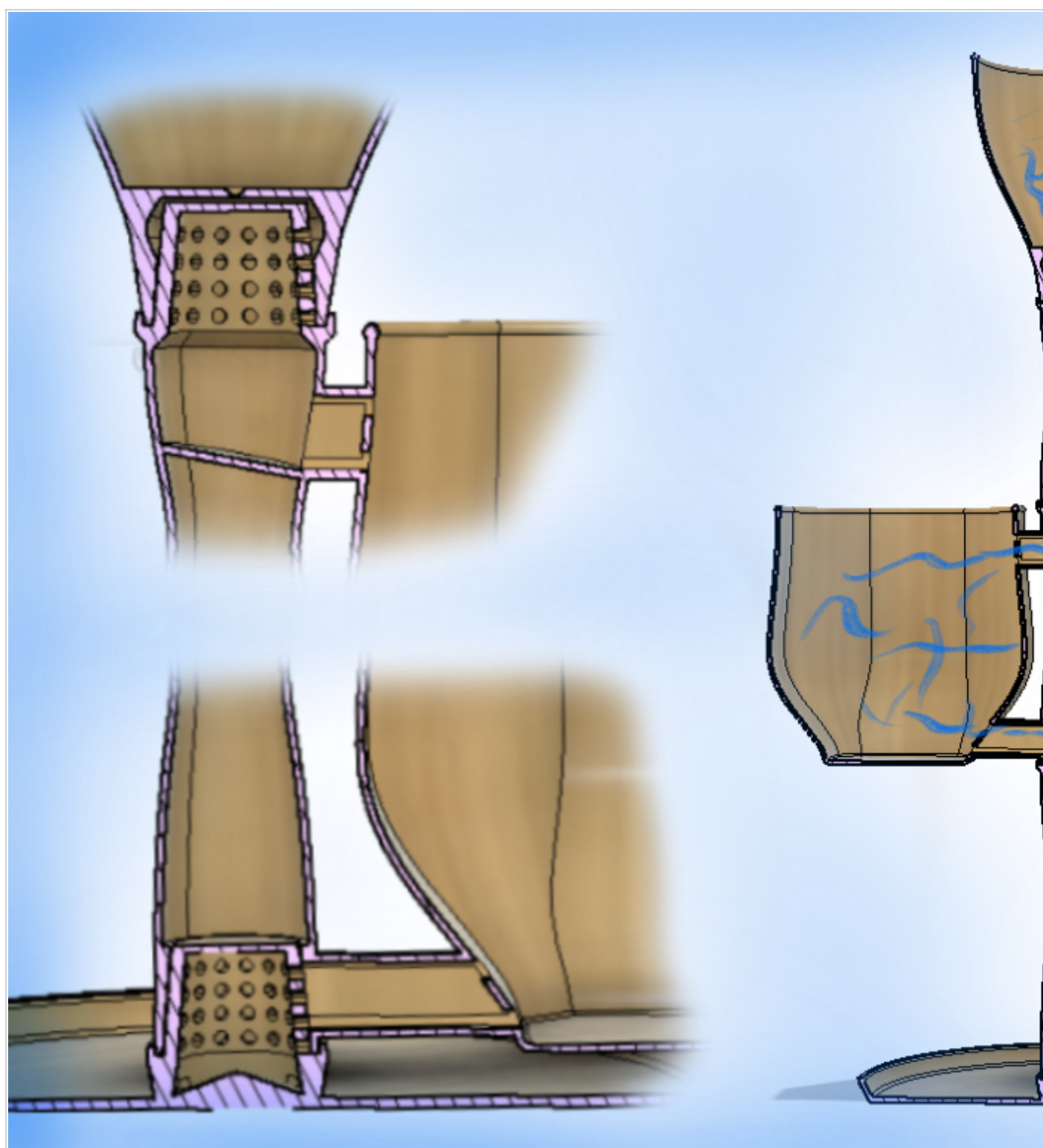
updated 9. 2. 2022 | published 11. 4. 2021

Summary

It is a collection of exotic vases that stack up. It is easy to water while saving on space. Lots of customization

[Household](#) > [Outdoor & Garden](#)

Tags: [plant](#) [planter](#) [garden](#) [fun](#) [fusion](#) [grow](#) [grower](#)
[growing](#) [plantpot](#) [flowerpot](#) [plants](#) [indoor](#) [deskplanter](#)
[planters](#) [planterpot](#) [planterspot](#) [indoorplantpot](#)
[indoorplanter](#) [succulentpot](#) [growbox](#) [pots](#) [growtray](#)





High Gardens purpose is to grow more plants on your living (empty) space. A garden
Designed for plants that enjoy a define wet and dry cycle. Also easy to water, the exce

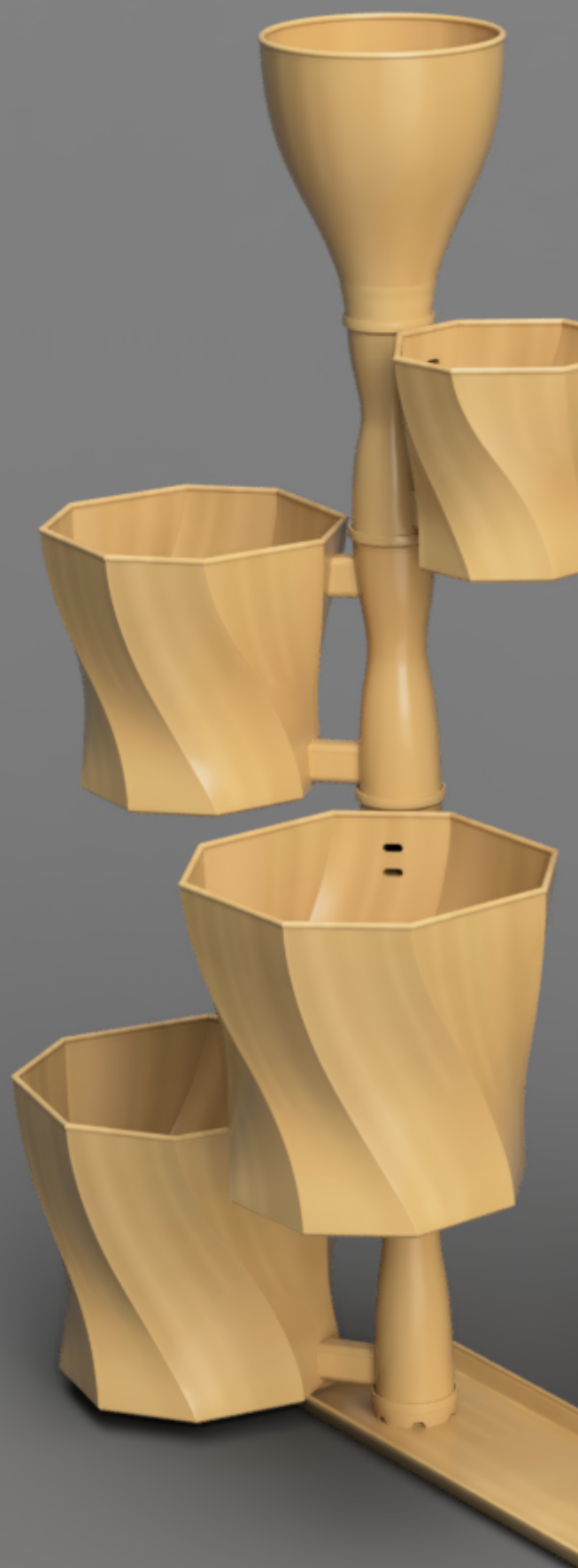


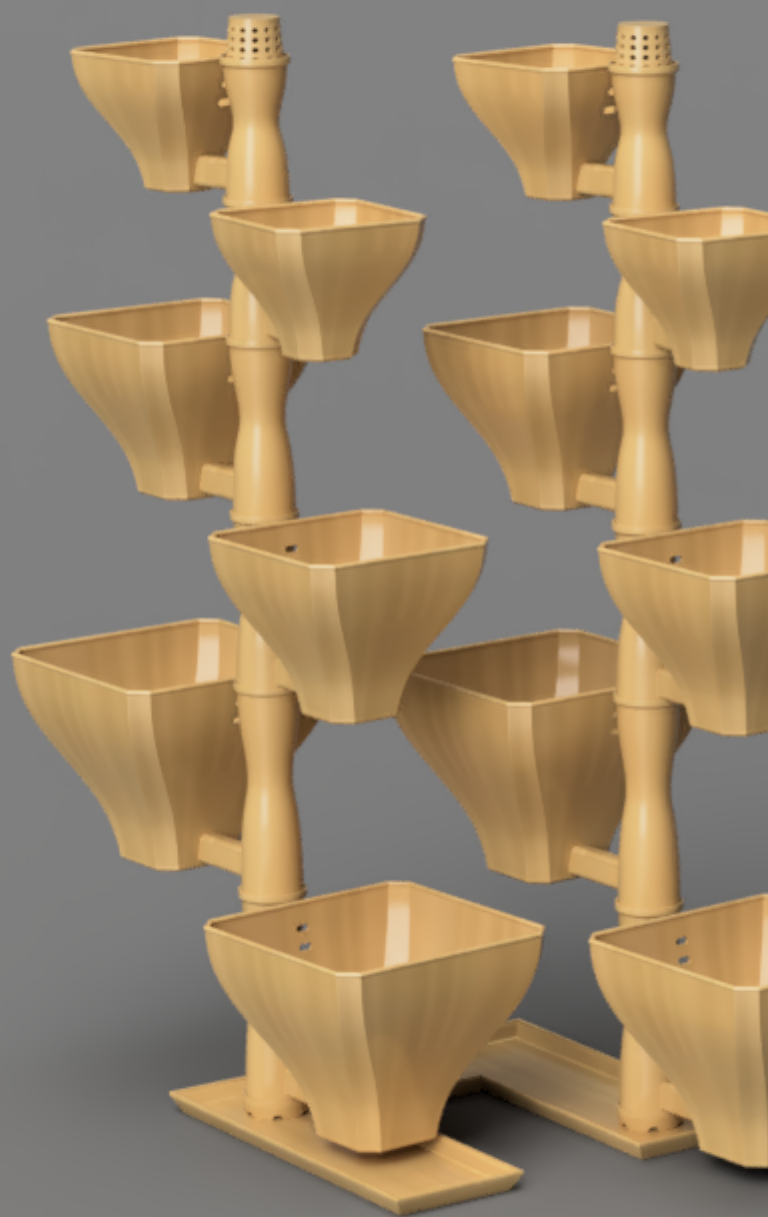
To get started first you pick a style. There are lots of options. Pick between 5 forms and



Second, when picking a plate, choose one that will fill up that blank space at home. Pic

There are many possible combination and maybe you end up with something like this





Or like this,



maybe that.

Upgrades.

April 10 - Wall support added to the family.



April 22 - Create a Prusa Mount plate. It fits your old spools to be reuse as base support







Reality Check

Here are some tips to have a successful system:

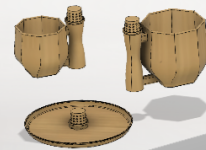
1. Use a Big plate for a big tower.
2. Use high drainage soil.

Customization Options

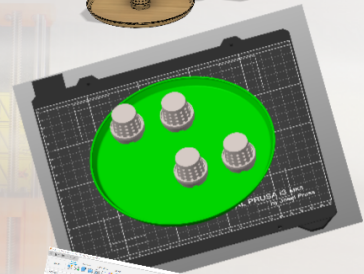
Many ways to customize your print

Easy

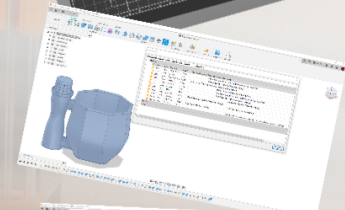
Pick your favorite models and go ...



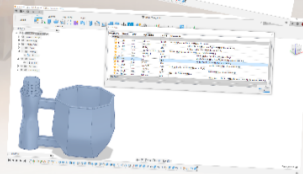
In Prusa Slicer
Add tower to a plate
Or scale up /down



Jump in to Fusion360
and change the
basic shape or size



Change advance
parameter and create
a total different form.



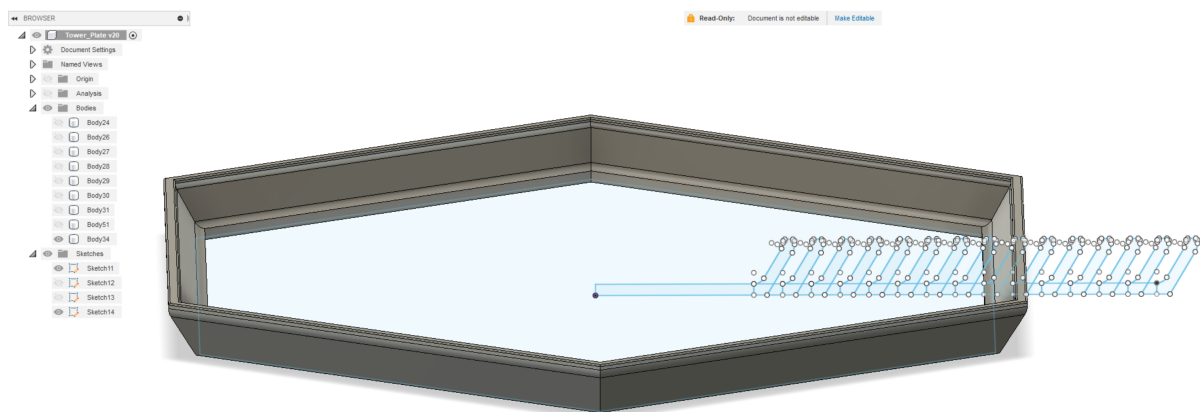
Harder

Parametric Options

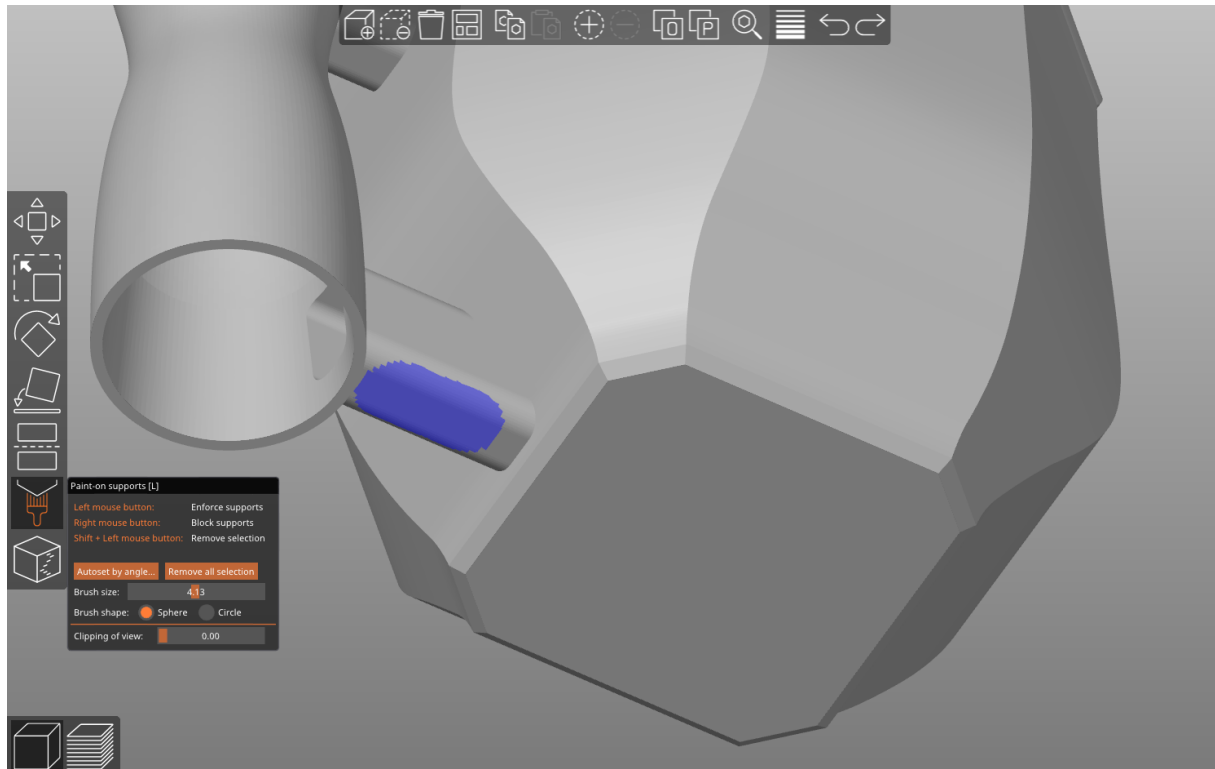
Parameters	Name	Unit	Expression	Value	Comments
▼ Favor...					
★	Size	mm	90 mm	90.00	Vase top Diameter (Basic setting) Use 80 or more.
★	d16	mm	-Size * 0.14	-12.60	Bottom Section, offset from Top Diameter (Advance setting)
★	d17	deg	45 deg	45.0	Bottom Section, Rotation (Advance setting)
★	d81	mm	Size * 0.45 + ...	51.30	Water Colum Distance from vase center (Medium setting)
★	d12	mm	height / 14	4.821	Middle Section Elevetion (Advance setting)
★	d14	mm	-Size * 0.11	-9.90	Middle Section, offset from Top Diameter (Advance setting)
★	d15	deg	45 deg	45.0	Middle Section, Rotation (Advance setting)
★	d18	deg	45 deg	45.0	Top Section Rotation (Advance setting)
★	d104	mm	Size * 0.21	18.90	Main Body edge modifier (Medium settings)
★	wall	mm	1.35 mm	1.35	Wall Thikckness (Advance setting)
★	height	mm	Size * 0.75	67.50	Vase Hight (Medium setting)
★	tolera...	mm	0.15 mm	0.15	Printer perfect clrance needed between printed parts (Advance setting)
> User...					
> Mod...					

All vases on this project were generated with the same base file but different parameters. Please, change it in very small increments. (more parameter are hidden too)

Also, plates can be any shape you want with Fusion file provided named 'Plates.f3d'



Printing Settings



Works with all filament.

Print at 0.2mm layer for Vases and 0.3mm layer for plates (use variable layer height and save printing time)

15% Infill. there is so little!

Paint Support as Shown >

Each Vase takes between 4 to 10 hours

Prints are Prusa ASA or PLA Galaxy black. Small, Medium and Large Tulip Vases showing.

Cheers.

Updates

April 12 - Thicker plates (v1); thicker custom plates

April 22- Wall mounted is reservoir compatible, slotted holes for easy levelling.

We need more plants !

Plants decrease allergies, control humidity, purify the air, provide basic medicine, make you relax , they help with sleep, relief stress, they also promote healing, mental and emotional Health. Wow!

Painted renders





Model files



Vases

15 files



tulip_large.stl



tulip_medium.stl



tulip_small.stl



orchid_large.stl



orchid_medium.stl



orchid_small.stl



violet_large.stl



violet_medium.stl



violet_small.stl



camelia_large.stl



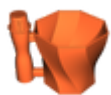
camelia_medium.stl



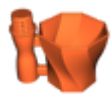
camelia_small.stl



daisy_large.stl



daisy_medium.stl



daisy_small.stl



Plates

13 files



circle_plate_1_v1.stl



clover_plate_1_v1.stl



clover_plate_3v1.stl



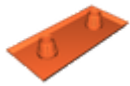
curved_plate_1_v1.stl



curved_plate_2_v1.stl



rectangle_plate_1_v1.stl



rectangle_plate_2_v1.stl



u_shape_2a_v1.stl



u_shape_2b_v1.stl



tearshape_plate_1_v1.stl



tearshape_plate_2v1.stl



corner_plate_1_v1.stl



corner_plate_2_v1.stl



Reservoir, Extension , Wall Mount And Prusa Mount

7 files



prusa-mount.stl



reservoir.stl



towerextension_1.stl



towerextension_2.stl



wall_mounted1v1.stl



wall_mounted2v1.stl



wall_mounted_suported_v1.3mf



Custom Options

20 files



custom_tower-plate-connector_v1.stl



custom_rectangle_plate_v1.stl



custom_u_shape_plate-v1.stl



custom_curved_plate_v1.stl



custom_circle_plate_v1.stl



custom_tearshape_plate_v1.stl



custom_clover_plate_v1.stl



custom_corner_plate_v1.stl



daisy.f3d



orchid.f3d



violet.f3d



camelia.f3d



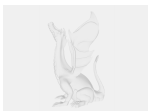
tulip.f3d



plates.f3d



tulip.step



plates.step



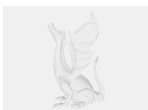
violet.step



daisy.step



camelia.step



orchid.step



Older_versions

29 files



wall_mounted2.stl



wall_mounted1.stl



wall_mounted_supported.3mf



custom_tower-plate-connector.stl



custom_tearshape_plate.stl



custom_curved_plate.stl



custom_rectangle_plate.stl



custom_corner_plate.stl



custom_clover_plate.stl



custom_circle_plate.stl



custom_u_shape_plate.stl



circle_plate_1.stl



clover_plate_1.stl



clover_plate_3.stl



tearshape_plate_1.stl



tearshape_plate_2.stl



u_shape_2a.stl



u_shape_2b.stl



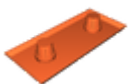
corner_plate_2.stl



corner_plate_1.stl



rectangle_plate_1.stl



rectangle_plate_2.stl



curved_plate_1.stl



curved_plate_2.stl



reservoir.stl



towerextension_2.stl



towerextension_1.stl



wall_mounted1.stl



wall_mounted2.stl

License ©

This work is licensed under a
[Creative Commons \(4.0 International License\)](https://creativecommons.org/licenses/by/4.0/)



Attribution

- ✘ | Sharing without ATTRIBUTION
- ✓ | Remix Culture allowed
- ✓ | Commercial Use
- ✓ | Free Cultural Works
- ✓ | Meets Open Definition