

Portable Folding Stepstool

 Wilko_SLO

[VIEW IN BROWSER](#)

updated 24. 4. 2022 | published 16. 4. 2022

Summary

Folds for storage. It's lightweight for easy transport. At picnic sit on it, at home step on it to reach higher places.

[Household](#) > [Other House Equipment](#)

Tags: [car](#) [garden](#) [chair](#) [foldable](#) [picnic](#) [chairfoot](#)

Foldable chair is simply for storage in car, van, wardrobe, or take it to picnic place.










Tested with sit on it and stand on it, all OK (80kg)

Print it with PETG Z=0,3 and with support. Suggest 3 perimeter.

For BIG side and Small side You need to connect parts together and fix them with fixers. Big and Small sides are separated for easier print because of the hinges. (Some are higher and others are lower from the plate.

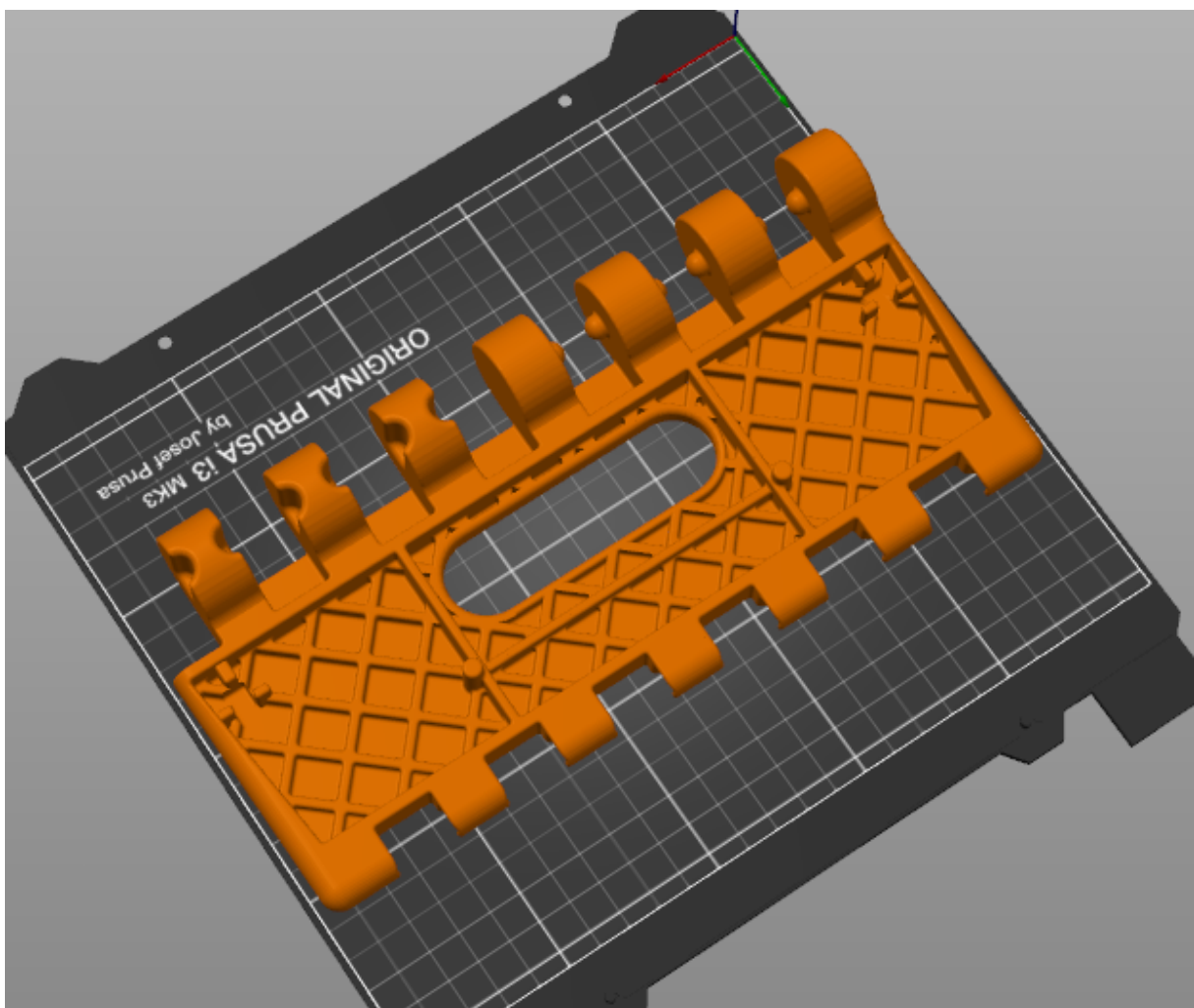
I suggest first to print all, then test that all perfect fits together and then put in fixers, because every fixer you can put in only one time. You can't take apart after.

Parts are:

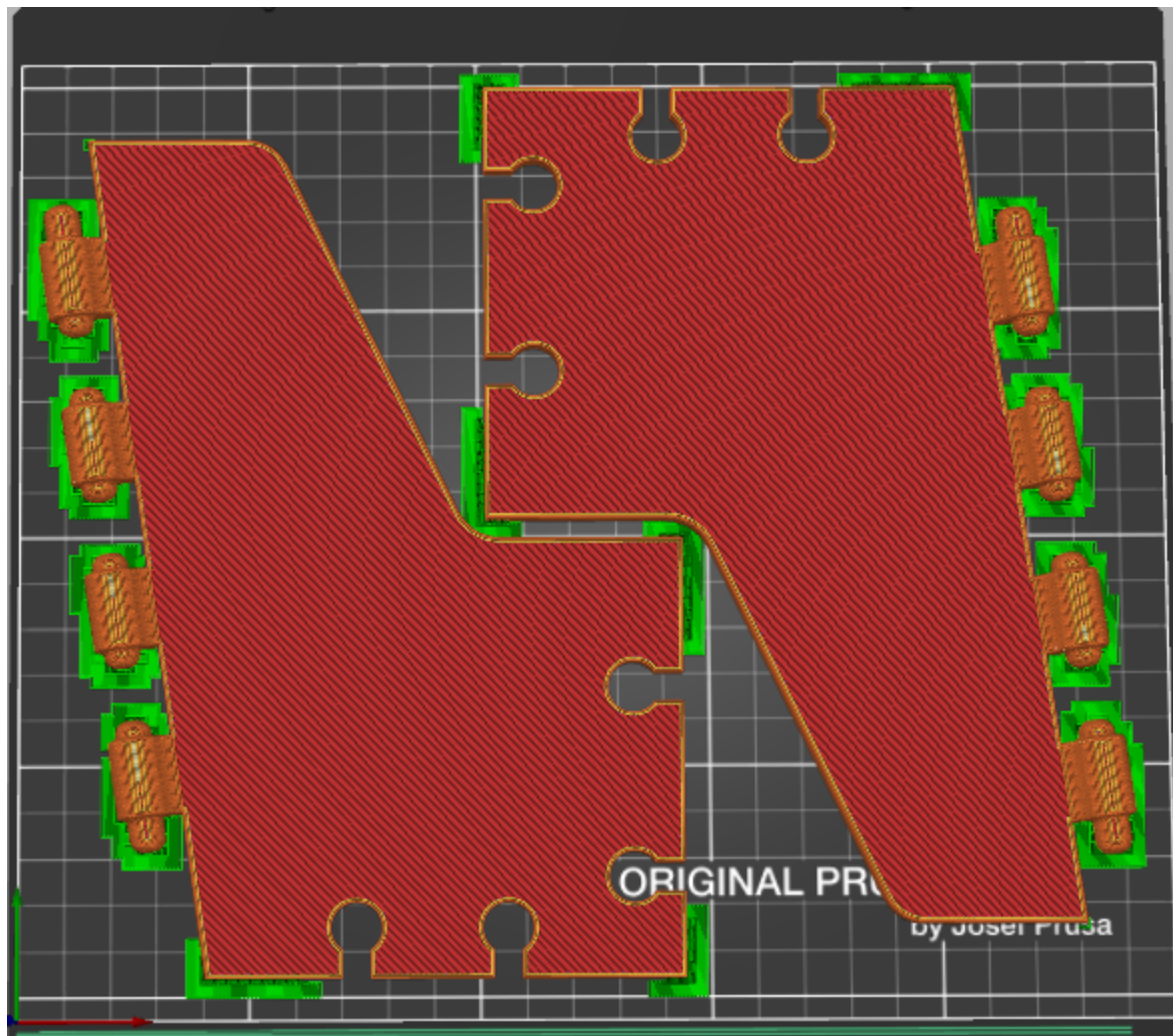
-  _2x Chair TOP half WITHOUT support.stl
-  _4x FIXers WITHOUT support.STL
-  2x BIG side L with support.stl
-  2x BIG side R with support.stl
-  2x BIG side UP with support.stl
-  2x Small side LL with support.stl
-  2x Small side LR with support.stl
-  2x Small side RL with support.stl
-  2x Small side RR with support.stl

How to print

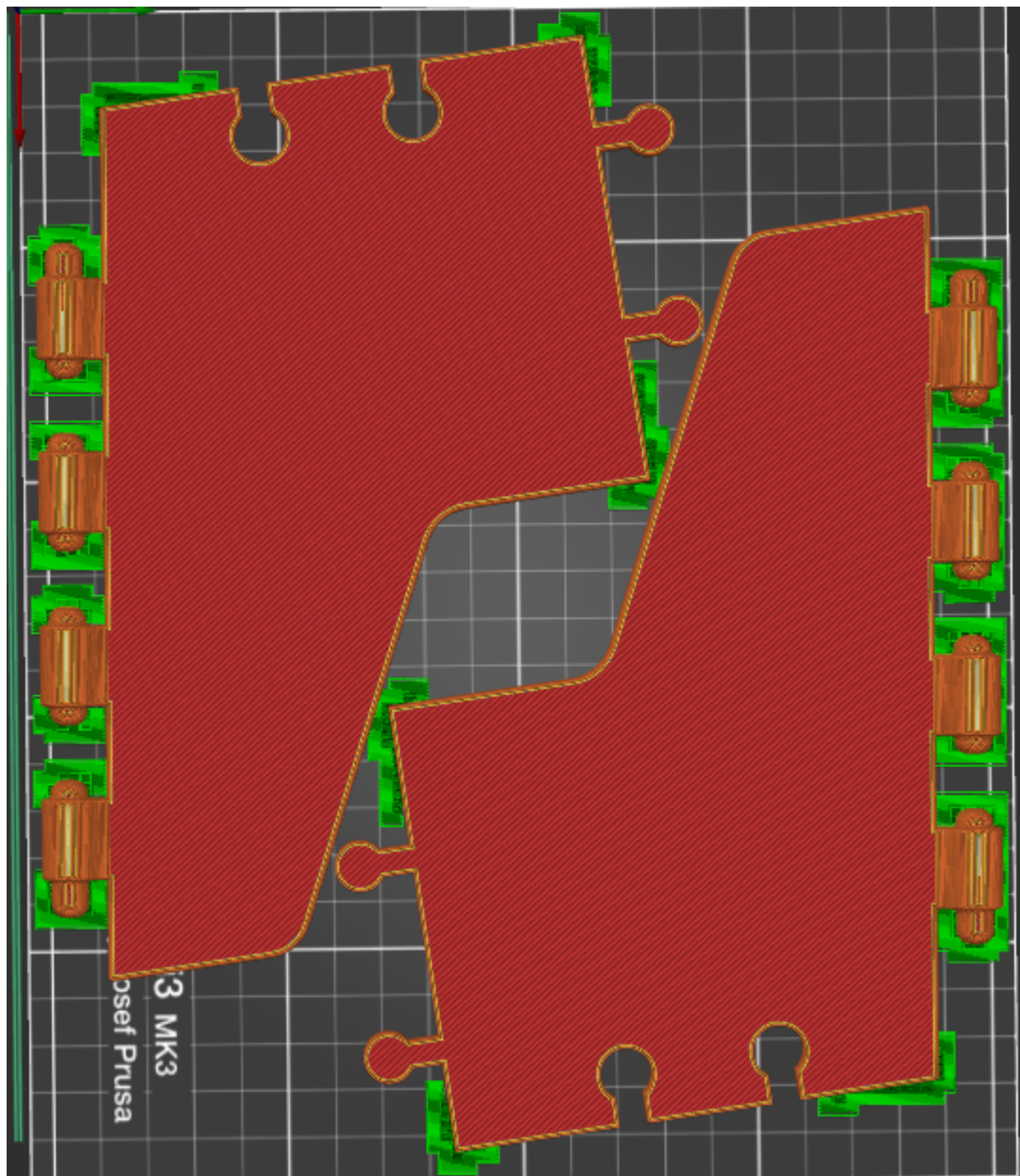
2 times Chair TOP half WITHOUT support (each part separately)



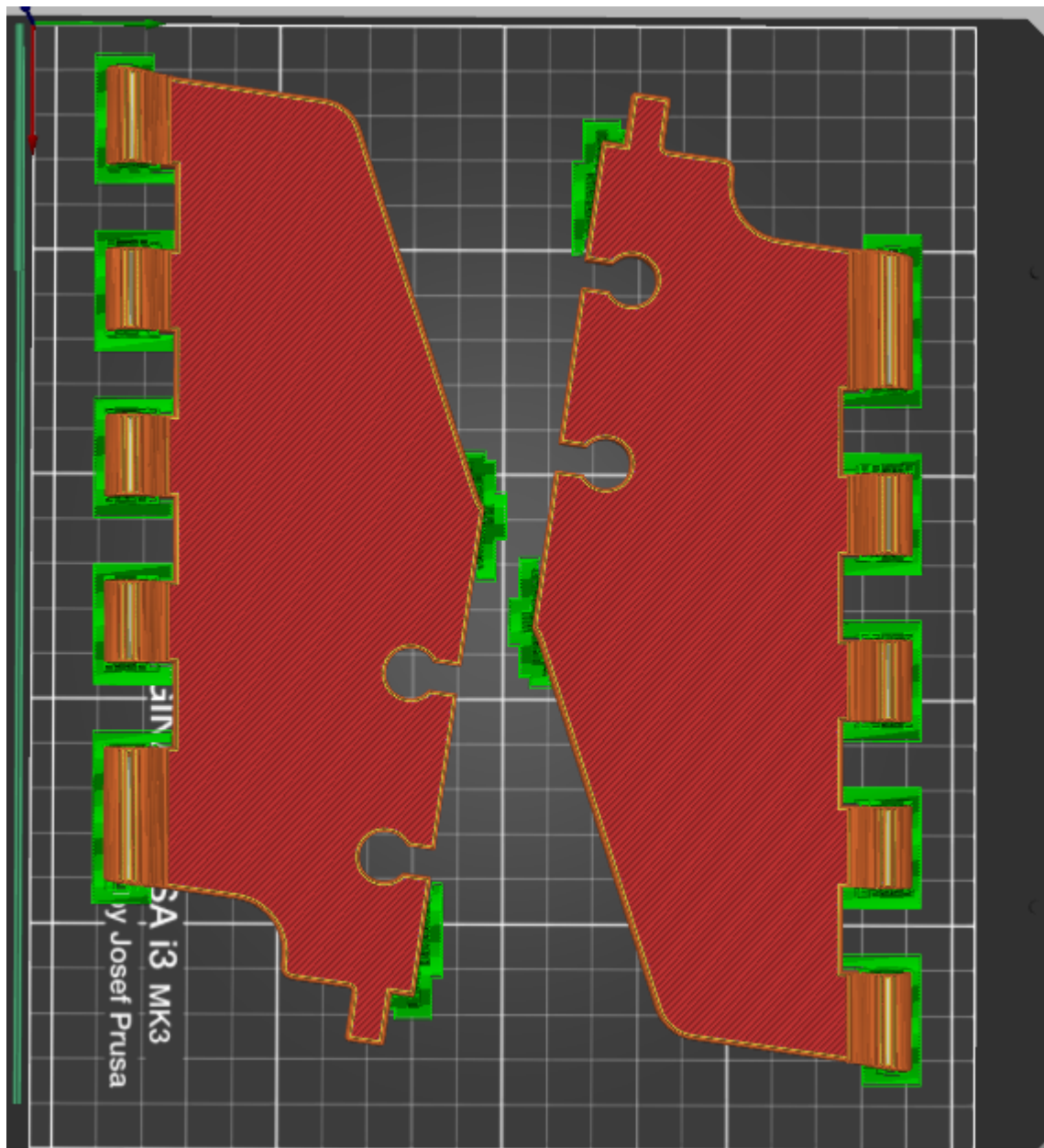
2x BIG side L with support



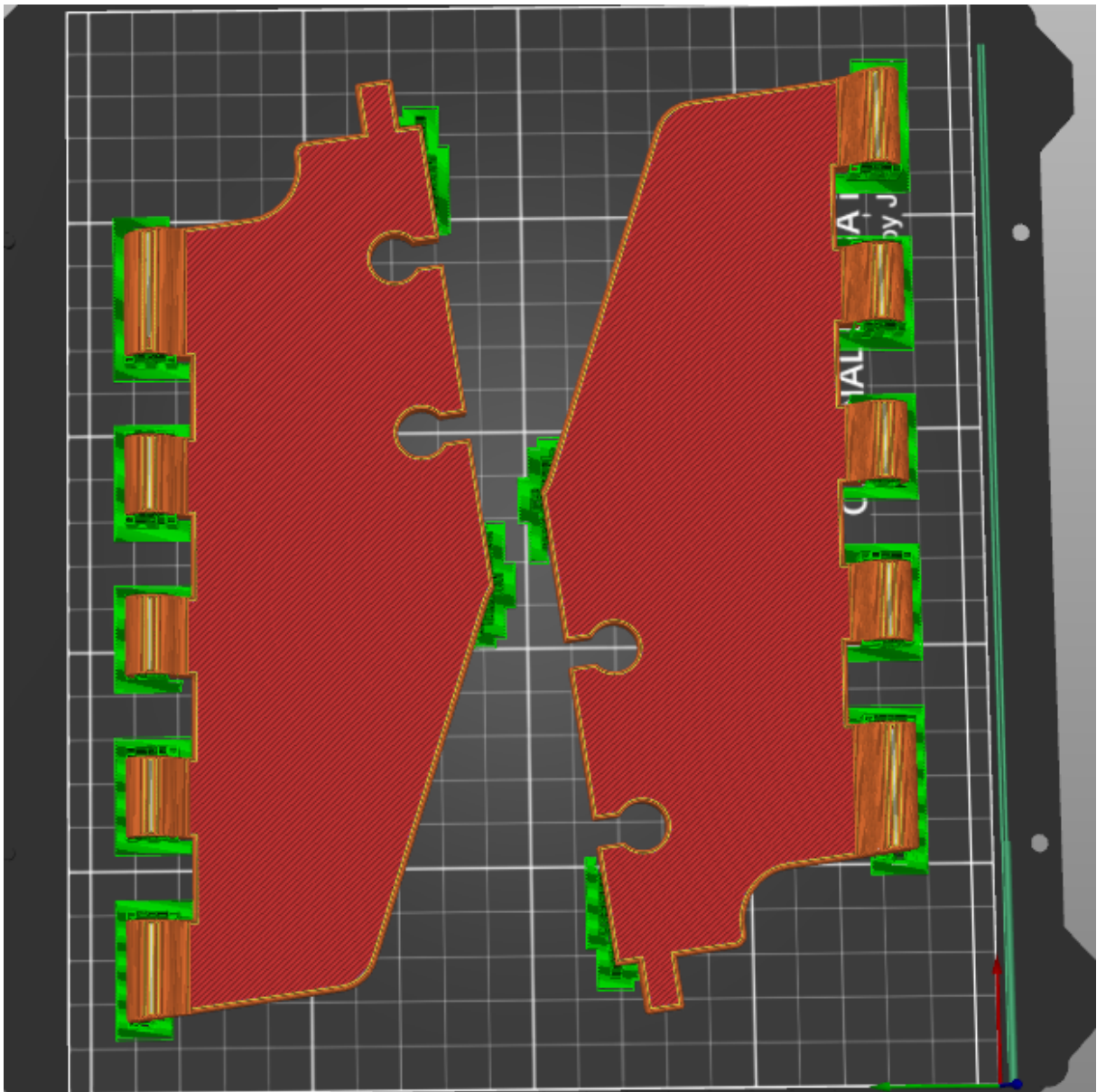
2x BIG side R with support



2x Small side LL with support



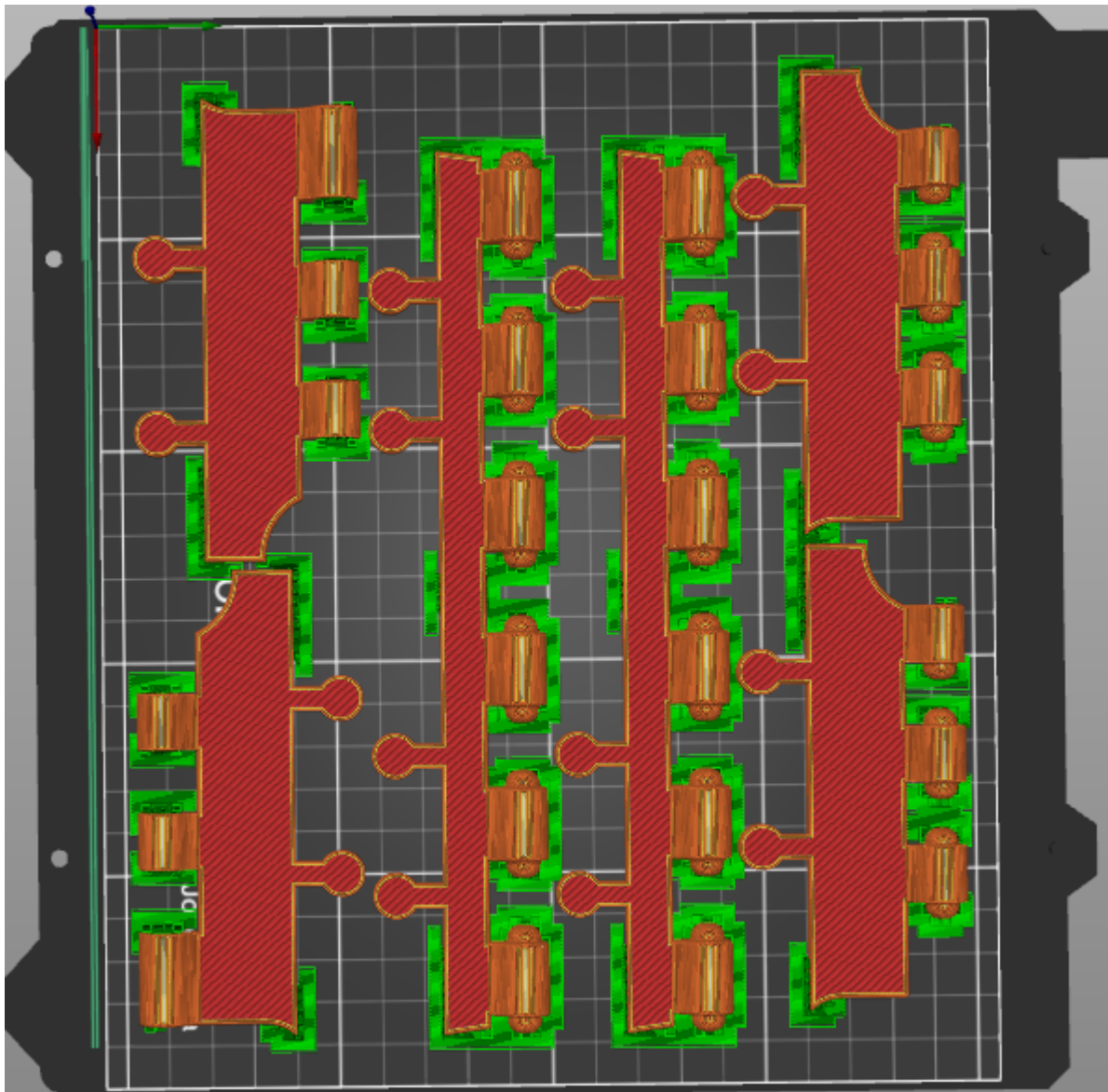
2x Small side RR with support



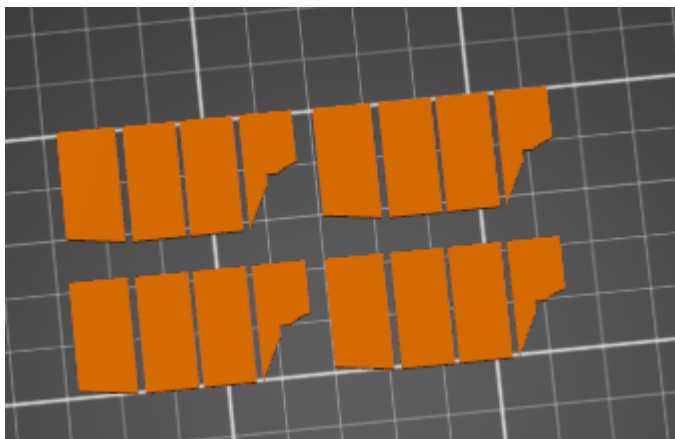
2x BIG side UP with support

2x Small side RL with support

2x Small side RL with support

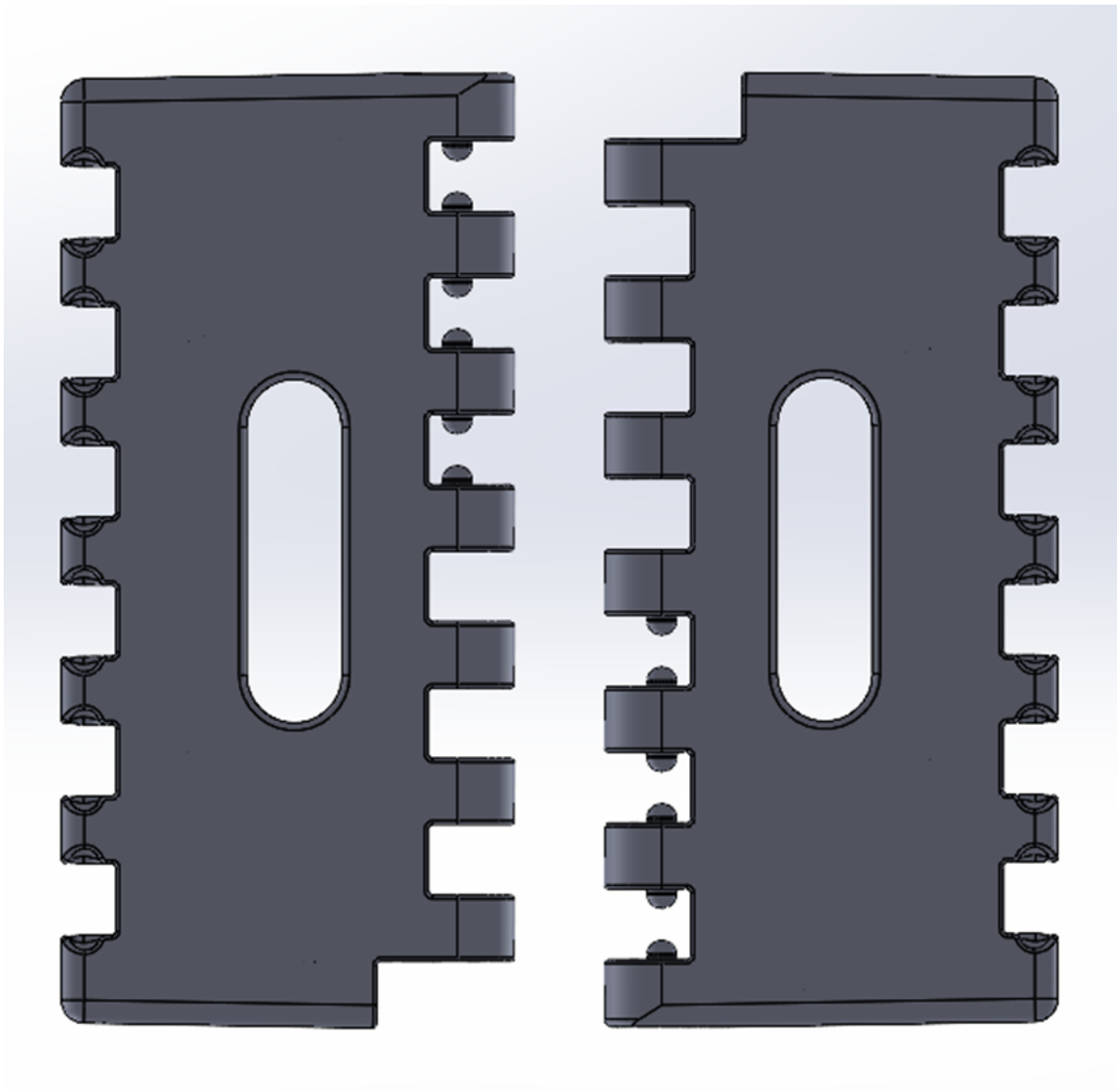


Print 4x FIXers WITHOUT support

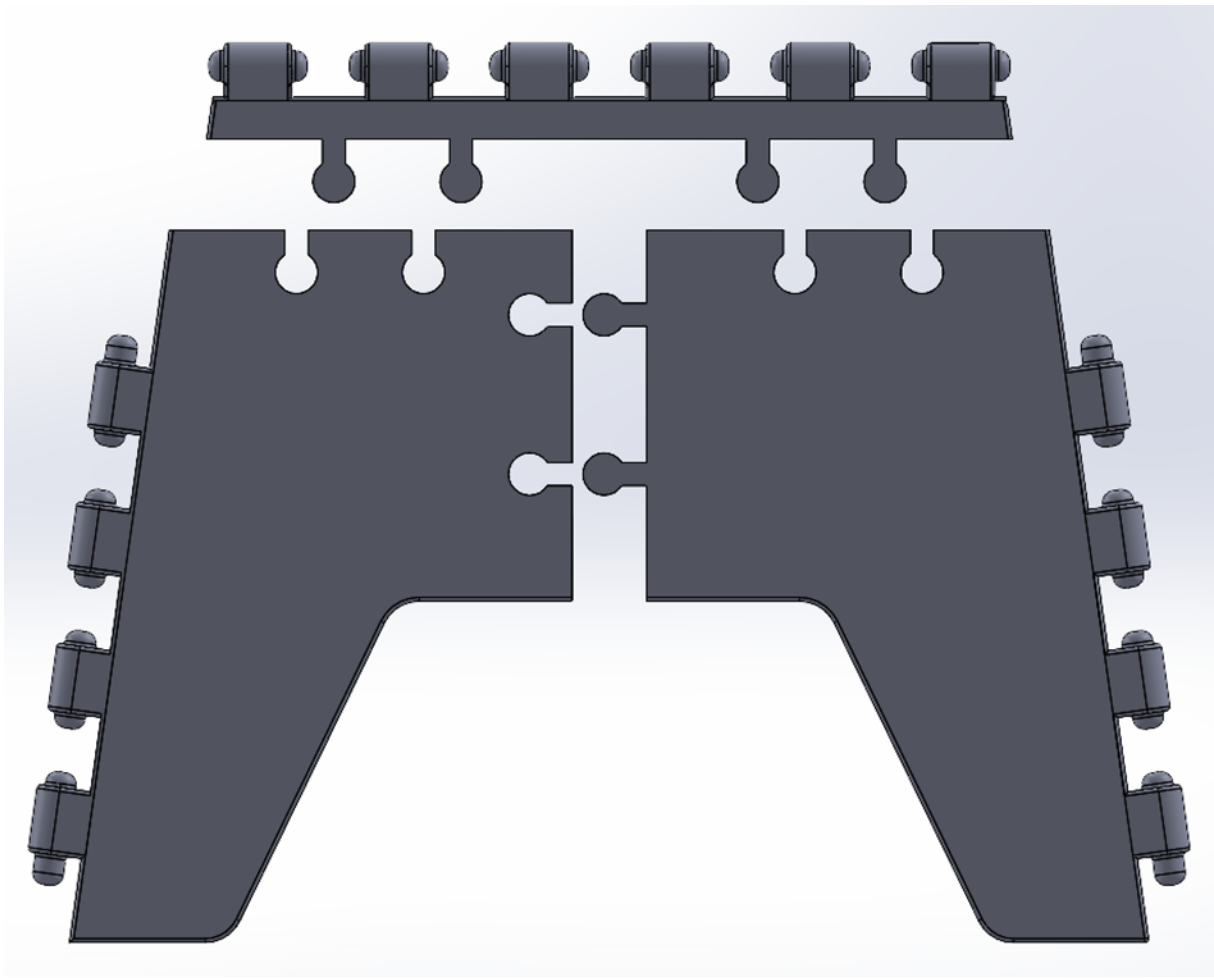


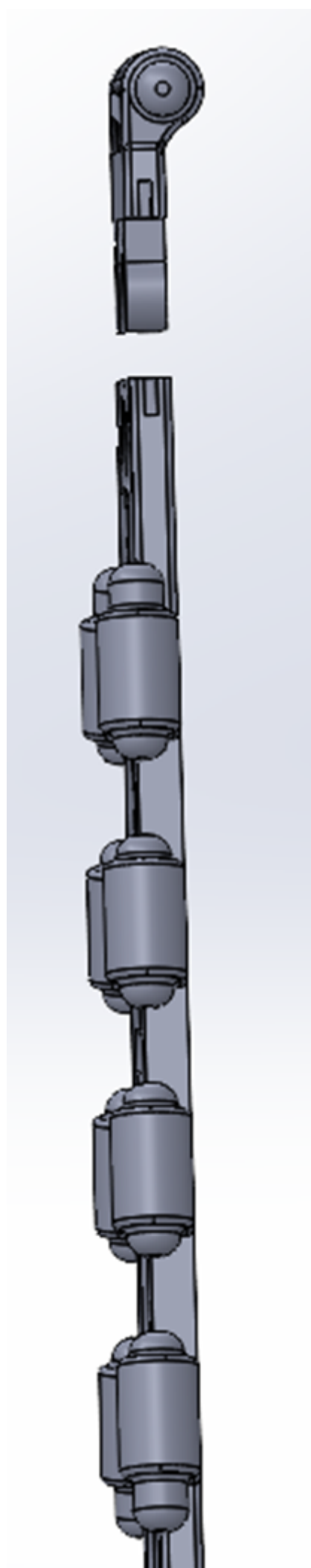
How to Built:

First put together Chair TOP halves in the opposite way.

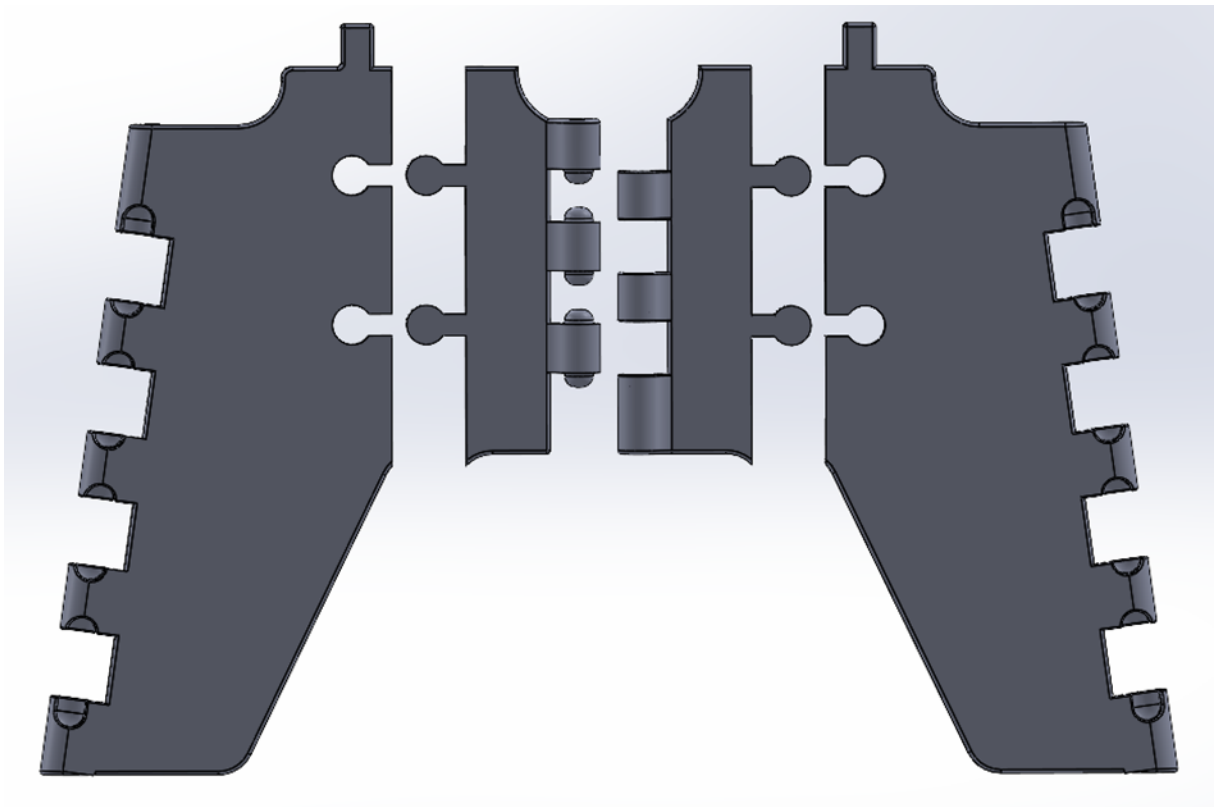


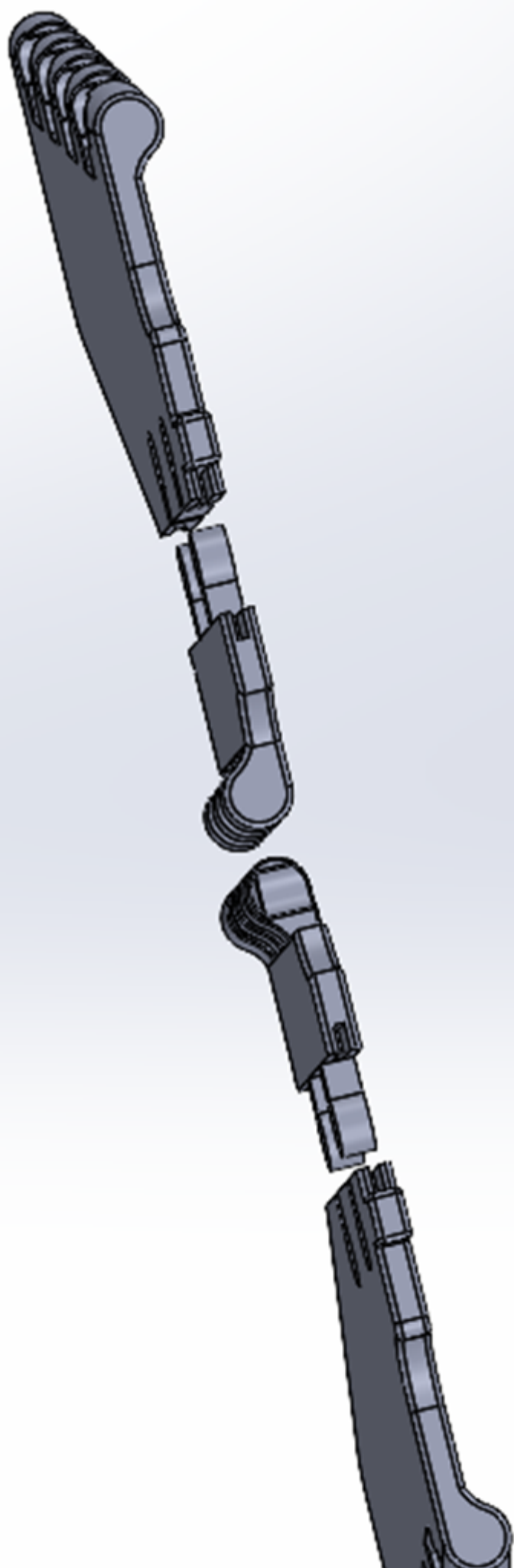
Built together parts of BIG side. (Like puzzle)! Be careful with the position of the hinges!



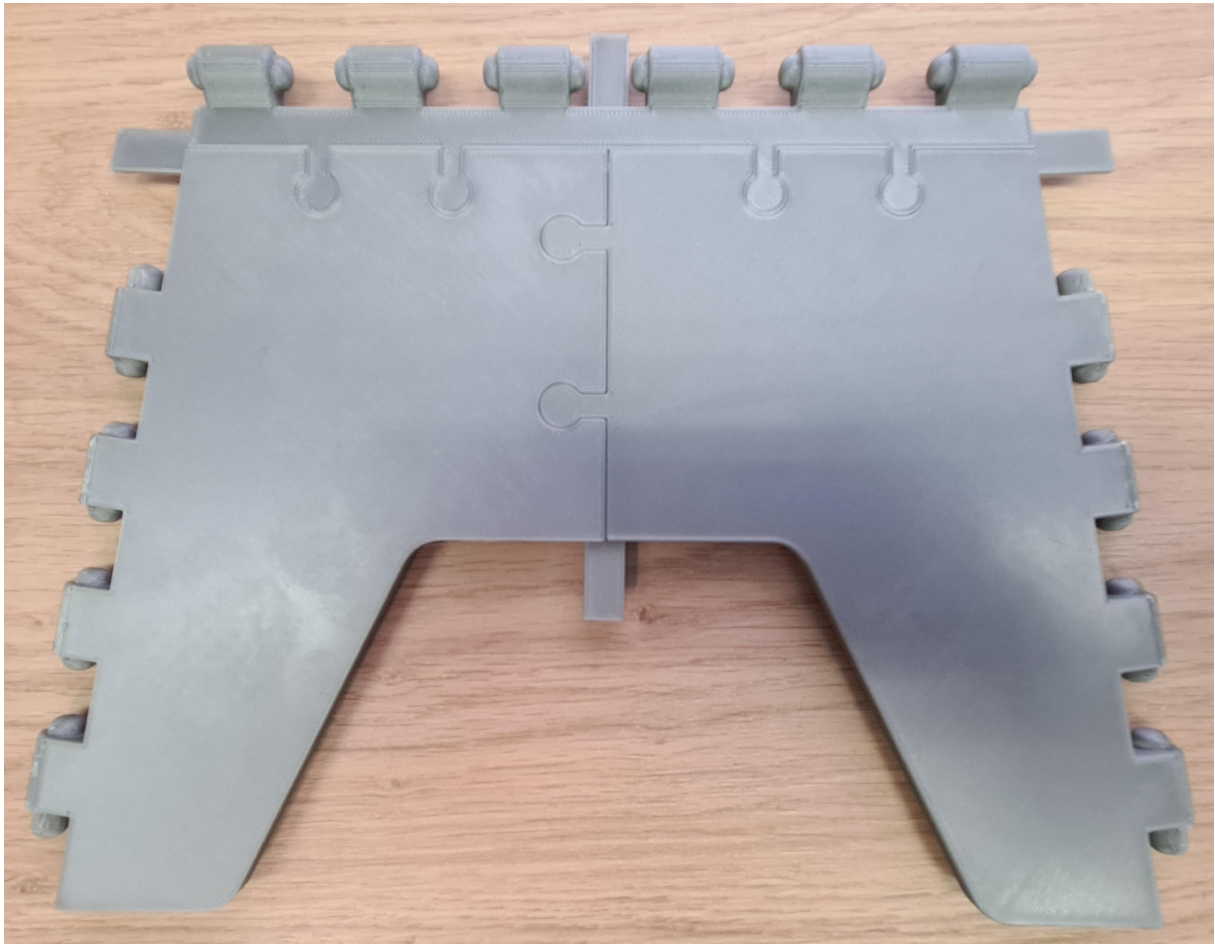


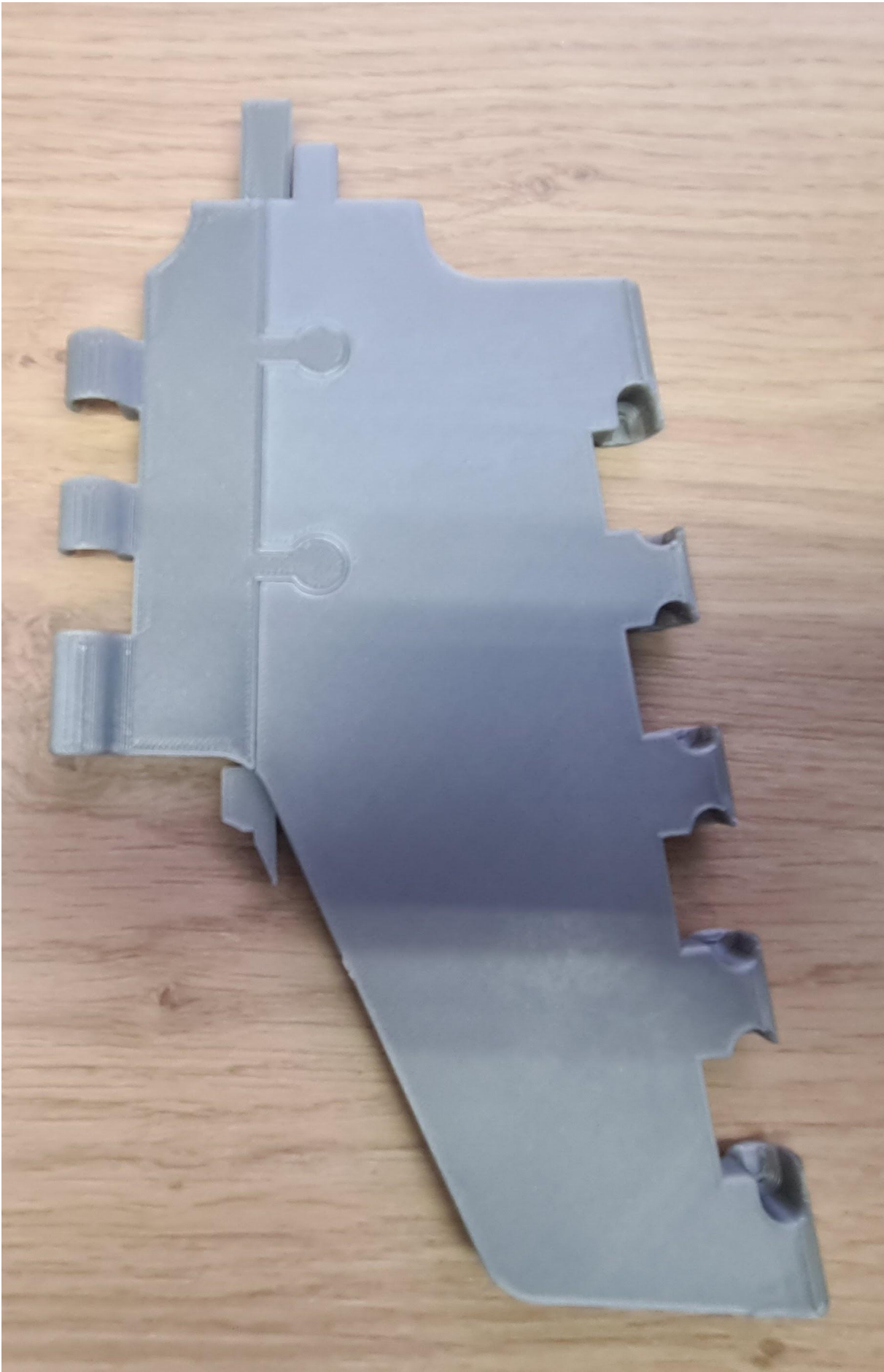
Built together parts of Small side. (Like puzzle)! Be careful with the position of the hinges!





Fix both BIG sides and both Small sides with fixers. Please test that all perfect fits together and then put in fixers, because every fixer you can put in with a hammer only one time. You can't take apart after.





Put all together at the hinges

The last hinges should be:

When finished, fold it and unfold. (Top side a little up, Small side folds to interior, then, both to the end folding position, For unfold it, do this opposite way.

Sit on it if you are tired :)

W

Model files



2x-chair-top-half-without-support.stl



2x-big-side-up-with-support.stl



2x-big-side-r-with-support.stl



2x-big-side-l-with-support.stl



2x-small-side-ll-with-support.stl



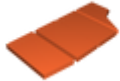
2x-small-side-lr-with-support.stl



2x-small-side-rr-with-support.stl



2x-small-side-rl-with-support.stl



4x-fixers-without-support.stl

License ©



This work is licensed under a
[Creative Commons \(4.0 International License\)](https://creativecommons.org/licenses/by-nc-nd/4.0/)

Attribution—Noncommercial—No Derivatives

- ✖ | Sharing without ATTRIBUTION
- ✖ | Remix Culture allowed
- ✖ | Commercial Use
- ✖ | Free Cultural Works
- ✖ | Meets Open Definition