

Print-in-Place Bag Clip



neoyarus

[VIEW IN BROWSER](#)

updated 11. 7. 2022 | published 27. 10. 2021

Summary

A 10-16 cm bag clip set with print-in-place hinges. No supports or brim needed. Now with a 5 cm version



0.77 hrs



24 pcs



0.30 mm



0.40 mm



PLA
PET



12 g



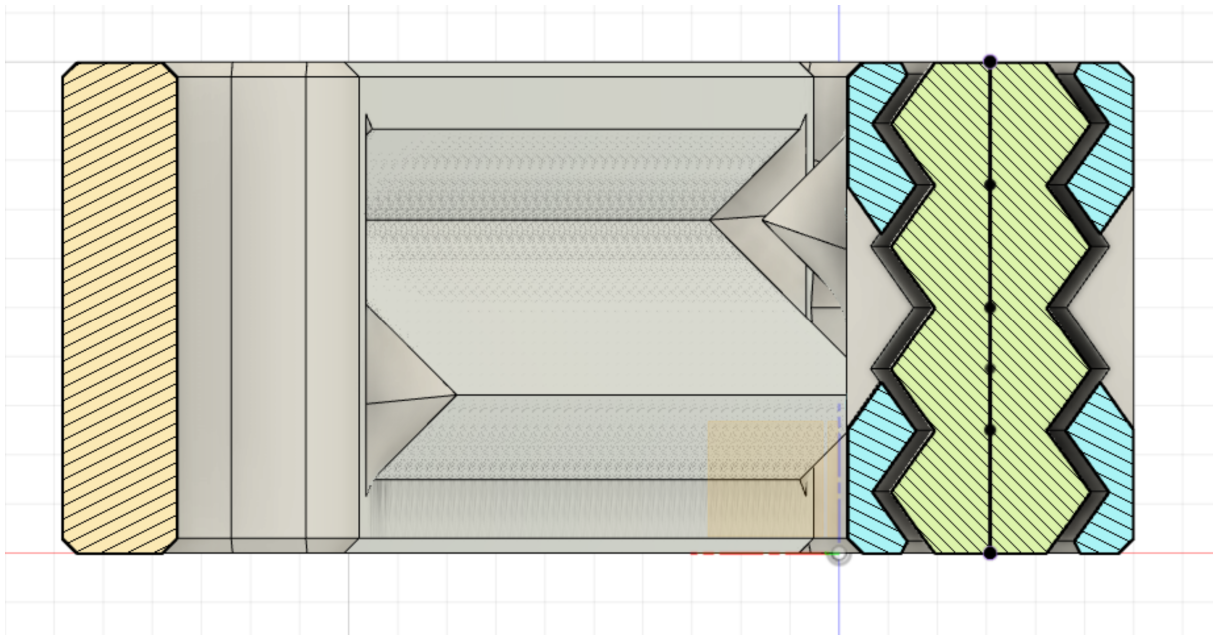
Prusa
MK3/S/S+

[Household](#) > [Kitchen](#)

Tags: [hinge](#) [printinplace](#) [bagclip](#) [hinges](#) [hinged](#)
[sustainability](#)

I made a **new version** with a stronger hinge and parametric source files. Check it out! Origin story

I needed a bag clip for my cat food but couldn't find one that would last more than a week. The problem was that the existing ones had some part that I needed to bend in order to close the clip, and it always ended up breaking. So, I decided to design my own bag clip with robust print-in-place hinges for higher reliability and cool factor :)



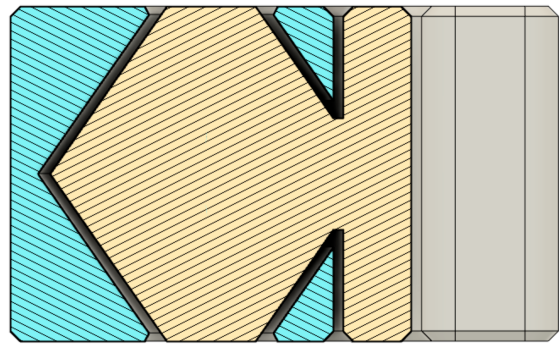
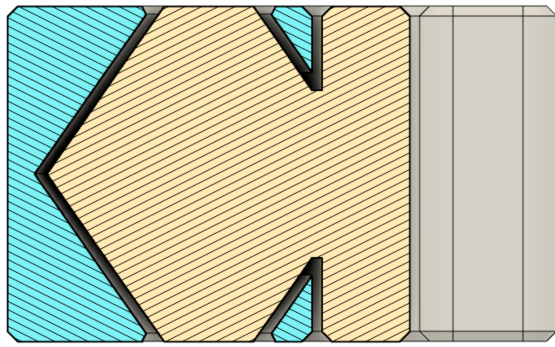
I've been using the very first version of this clip for about 8 months now and it's still going strong. This latest one is the most compact of my designs at almost half the width of the original. I achieved this with a new slim hinge, which allowed the arms to be much thinner without compromising strength.

Recommendations

As for printing this model, I recommend you use PETG for its great bed adhesion and mechanical resilience. You could use PLA too, but beware that it will deform over time due to the pressure of whatever you clamping constantly pushing the arms apart and eventually bending them slightly. If you do choose PLA you can restore the clip to its original shape by compressing it with some kind of clamp and putting it in warm water for 10 minutes.

Updates:

- Added a **super tight** version, which won't unlock accidentally but requires a lot more force to use.
- Added a **tight** version, which still shouldn't open accidentally, but requires a bit less force to use.
- Added a **12 cm** version
- Added a **14 cm** version
- Added a **16 cm** version
- Added **tight** versions for the **12-16 cm** size range
- Organized files into folders by size
- Added a **5 cm** version
- Revised the **main hinge** design to be more durable. (Original and super tight 10 cm clips are still available as alternative versions, everything else has been replaced)



Model files



5 cm variants

2 files



5-cm-bag-clip.3mf

☐ Easy to open and close



5-cm-tight-bag-clip.3mf

☐ Needs some force to open and close



10 cm variants

4 files



10-cm-tight-bag-clip.3mf

☐ Needs some force to open and close



10-cm-bag-clip.3mf

☐ Easy to open and close



10-cm-bag-clip-original.3mf

☐ Original version. Easy to open and close. Original hinge



10-cm-super-tight-bag-clip.3mf

☐ Really hard to open and close. Original hinge



12 cm variants

2 files



12-cm-tight-bag-clip.3mf

☐ Needs some force to open and close



12-cm-bag-clip.3mf

☐ Easy to open and close



14 cm variants

2 files



14-cm-tight-bag-clip.3mf

☐ Needs some force to open and close



14-cm-bag-clip.3mf

☐ Easy to open and close



16 cm variants

2 files



16-cm-tight-bag-clip.3mf

☐ Needs some force to open and close



16-cm-bag-clip.3mf

☐ Easy to open and close

Print files



5 cm variants

4 files



5-cm-tight-bag-clip_03mm_petg_mk3s_30m.gcode

PET 0.40 mm 0.30 mm 0.50 hrs 8 g Prusa MK3/S/S+

☐ 5 cm version. Needs some force to open and close



5-cm-tight-bag-clip_03mm_pla_mk3s_30m.gcode

PLA 0.40 mm 0.30 mm 0.50 hrs 7 g Prusa MK3/S/S+

☐ 5 cm version. Needs some force to open and close



5-cm-bag-clip_03mm_petg_mk3s_30m.gcode

PET 0.40 mm 0.30 mm 0.50 hrs 8 g Prusa MK3/S/S+

☐ 5 cm version. Easy to open and close



5-cm-bag-clip_03mm_pla_mk3s_30m.gcode

PLA 0.40 mm 0.30 mm 0.50 hrs 7 g Prusa MK3/S/S+

☐ 5 cm version. Easy to open and close



10 cm variants

8 files



10-cm-tight-bag-clip_03mm_petg_mk3s_46m.gcode

⚙ PET ⚙ 0.40 mm ⚙ 0.30 mm ⌚ 0.77 hrs ⚖ 13 g 🖨 Prusa MK3/S/S+

☐ Needs some force to open and close



10-cm-tight-bag-clip_03mm_pla_mk3s_46m.gcode

⚙ PLA ⚙ 0.40 mm ⚙ 0.30 mm ⌚ 0.77 hrs ⚖ 12 g 🖨 Prusa MK3/S/S+

☐ Needs some force to open and close



10-cm-bag-clip_03mm_petg_mk3s_46m.gcode

⚙ PET ⚙ 0.40 mm ⚙ 0.30 mm ⌚ 0.76 hrs ⚖ 12 g 🖨 Prusa MK3/S/S+

☐ Easy to open and close



10-cm-bag-clip_03mm_pla_mk3s_46m.gcode

⚙ PLA ⚙ 0.40 mm ⚙ 0.30 mm ⌚ 0.76 hrs ⚖ 12 g 🖨 Prusa MK3/S/S+

☐ Easy to open and close



10-cm-bag-clip-original_03mm_petg_mk3s_46m.gcode

⚙ PET ⚙ 0.40 mm ⚙ 0.30 mm ⌚ 0.77 hrs ⚖ 12 g 🖨 Prusa MK3/S/S+

☐ Original version. Easy to open and close. No updated hinge



10-cm-bag-clip-original_03mm_pla_mk3s_46m.gcode

⚙ PLA ⚙ 0.40 mm ⚙ 0.30 mm ⌚ 0.77 hrs ⚖ 12 g 🖨 Prusa MK3/S/S+

☐ Original version. Easy to open and close. No updated hinge



10-cm-super-tight-bag-clip_03mm_petg_mk3s_46m.gcode

⚙ PET ⚙ 0.40 mm ⚙ 0.30 mm ⌚ 0.77 hrs ⚖ 13 g 🖨 Prusa MK3/S/S+

☐ Really hard to open and close. No updated hinge



10-cm-super-tight-bag-clip_03mm_pla_mk3s_46m.gcode

⚙ PLA ⚙ 0.40 mm ⚙ 0.30 mm ⌚ 0.77 hrs ⚖ 12 g 🖨 Prusa MK3/S/S+

☐ Really hard to open and close. No updated hinge



12 cm variants

4 files



12-cm-tight-bag-clip_03mm_petg_mk3s_1h1m.gcode

⚙ PET ⚙ 0.40 mm ⚙ 0.30 mm ⌚ 1.02 hrs ⚖ 17 g 🖨 Prusa MK3/S/S+

☐ Needs some force to open and close



12-cm-tight-bag-clip_03mm_pla_mk3s_1h1m.gcode

⚙ PLA ⚙ 0.40 mm ⚙ 0.30 mm ⌚ 1.01 hrs ⚖ 16 g 🖨 Prusa MK3/S/S+

☐ Needs some force to open and close



12-cm-bag-clip_03mm_petg_mk3s_1h1m.gcode

⚙ PET ⚙ 0.40 mm ⚙ 0.30 mm ⌚ 1.02 hrs ⚖ 17 g 🖨 Prusa MK3/S/S+

☐ Easy to open and close



12-cm-bag-clip_03mm_pla_mk3s_1h1m.gcode

⚙ PLA ⚙ 0.40 mm ⚙ 0.30 mm ⌚ 1.01 hrs ⚖ 16 g 🖨 Prusa MK3/S/S+



14 cm variants

4 files



14-cm-tight-bag-clip_03mm_petg_mk3s_1h9m.gcode

⚙ PET ⚙ 0.40 mm ⚙ 0.30 mm ⌚ 1.16 hrs ⚖ 19 g 🖨 Prusa MK3/S/S+

☐ Needs some force to open and close



14-cm-tight-bag-clip_03mm_pla_mk3s_1h9m.gcode

⚙ PLA ⚙ 0.40 mm ⚙ 0.30 mm ⌚ 1.15 hrs ⚖ 19 g 🖨 Prusa MK3/S/S+

☐ Needs some force to open and close



14-cm-bag-clip_03mm_petg_mk3s_1h10m.gcode

⚙ PET ⚙ 0.40 mm ⚙ 0.30 mm ⌚ 1.16 hrs ⚖ 19 g 🖨 Prusa MK3/S/S+

☐ Easy to open and close



14-cm-bag-clip_03mm_pla_mk3s_1h9m.gcode

⚙ PLA ⚙ 0.40 mm ⚙ 0.30 mm ⌚ 1.15 hrs ⚖ 19 g 🖨 Prusa MK3/S/S+

☐ Easy to open and close



16 cm variants

4 files



16-cm-tight-bag-clip_03mm_petg_mk3s_1h17m.gcode

PET 0.40 mm 0.30 mm 1.29 hrs 22 g Prusa MK3/S/S+

☐ Needs some force to open and close



16-cm-tight-bag-clip_03mm_pla_mk3s_1h17m.gcode

PLA 0.40 mm 0.30 mm 1.28 hrs 21 g Prusa MK3/S/S+

☐ Needs some force to open and close



16-cm-bag-clip_03mm_petg_mk3s_1h17m.gcode

PET 0.40 mm 0.30 mm 1.29 hrs 22 g Prusa MK3/S/S+

☐ Easy to open and close



16-cm-bag-clip_03mm_pla_mk3s_1h17m.gcode

PLA 0.40 mm 0.30 mm 1.28 hrs 21 g Prusa MK3/S/S+

☐ Easy to open and close

License

This work is licensed under a
[Creative Commons \(4.0 International License\)](#)



Attribution-ShareAlike

- ✗ | Sharing without ATTRIBUTION
- ✓ | Remix Culture allowed
- ✓ | Commercial Use
- ✓ | Free Cultural Works
- ✓ | Meets Open Definition