

3D MODEL ONLY



Plant Pot - Ribbed 01

**Ethan Emel**[VIEW IN BROWSER](#)

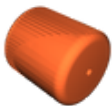
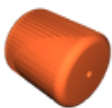
updated 12. 4. 2024 | published 12. 4. 2024

Summary

Plant Pot w/ ribs + angle design + drainage hole Dimensions:
ø110mm(4.4") x 120mm(4.7") tall

[Household](#) > [Outdoor & Garden](#)Tags: [pot](#) [planter](#) [garden](#) [plantpot](#) [houseplants](#)

Model files

**ribbedplantpot.3mf****ribbedplantpot.stl**

License ©

This work is licensed under a
Creative Commons (4.0 International License)



Attribution-NonCommercial

- ✗ | Sharing without ATTRIBUTION
- ✓ | Remix Culture allowed
- ✗ | Commercial Use
- ✗ | Free Cultural Works
- ✗ | Meets Open Definition