



Darth Vader Bust (STL)



Eastman

[VIEW IN BROWSER](#)

updated 12. 8. 2020 | published 16. 7. 2020

Summary

✓ For more sculpts like this, and if you are able to support my artwork, take a look at my Patreon :) Dun Dun Dun dun...

[Art & Design](#) > [Sculptures](#)

Tags: [vader](#) [darth](#) [star](#) [wars](#) [bust](#) [master](#) [helmet](#)
[armour](#) [armor](#) [eastman](#) [fantasy](#) [sith](#) [jedi](#) [force](#)
[scifi](#) [skywalker](#) [anakin](#)

✓ For more sculpts like this, and if you are able to support my artwork, [take a look at my Patreon](#) :)

Dun Dun Dun dun DUN Dun dun DUN Dun...

Now, everyone, stop requesting Darth Vader! He's here! Print him! Be happy!

My first memory of Vader is the scene in Empire where he chops off Luke's hand. I was probably way too young to watch it because it made such a lasting impression on me. While these days I'm more of a Trekker than a Star Wars fan I still enjoy the movies greatly (with a couple of exceptions), and sculpting Vader was ultimately inevitable.

I see you have re-designed him a bit...

I wanted to leave my own mark on this Vader, so I redesigned his body a bit, which I hope you don't mind. I believe the spirit of Vader is still there. I left the helmet as canon as I could!

Print instructions

So does this print without supports as well?

Yes! With a caveat. Because of those stupid little sticks that stick out of Vader's face mask I had to separate the body from the base, so there's two pieces to print.

The body

Now, the body part leans quite heavily, so put nice wide brim on it to keep it in place, and if it makes you feel safer put some supports down as well. The body can also be printed without infill, which is how I printed mine.

The base

The base needs infill until the three little "feet" end, but beyond that it can be printed without it. Shouldn't be any need on any printer for supports.

I printed this on my CR-10S using some PLA (from 3DNet, no affiliation), and the following settings (note this is just how I printed mine, not a straight out print guide):

Layer height: 0.12mm

Nozzle: 0.4mm

Perimeter: 1.2mm (3 perimeters)

Speed: 60mm/s (but S3D slows it down mostly)

Top/bottom # layers: 6

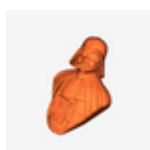
Infill: 10% rectilinear (on base)

Print time: Probably a total of 30 hours

Model files



darth-vader-bust-base-by-eastman.stl



darth-vader-bust-body-by-eastman.stl

License ©

This work is licensed under a
Creative Commons (4.0 International License)



Attribution—Noncommercial—No Derivatives

- ✕ | Sharing without ATTRIBUTION
- ✕ | Remix Culture allowed
- ✕ | Commercial Use
- ✕ | Free Cultural Works
- ✕ | Meets Open Definition