



Sunglasses/ Spectacles Case



muddymaker

[VIEW IN BROWSER](#)

updated 13. 4. 2024 | published 13. 4. 2024

Summary

Sunglasses/Spectacles Case

[Hobby & Makers](#) > [Organizers](#)

Tags: [case](#) [sunglasses](#) [spectacles](#)

If you like my work and enjoy my models please consider leaving me a tip/donation, It helps me to continue creating awesome models for you for free.

<https://paypal.me/muddymaker>

Maximum protection for your expensive glasses:)

Internal dimensions of the shallow case-H35mm, L160mm, W50mm

Internal dimensions of the deeper case-H60mm, L160mm, W50mm

You will require 6 M3X25mm fasteners that screw into the plastic.

There are 2 sizes to choose from, a shallow version that will fit most sizes and a deeper version to accomodate those huge flamboyant glasses that some people wear haha, the top fits both.

I've included an MMU top silhouette of glasses, alternatively there is a plain lid that fits both size cases.

I recommend printing the clips out of PETG@100% infill.

Included is an optional TPU seal, I recommend printing the seal with 2 perimeters/walls and 0% infill. Flat part of the seal faces up towards the lid. Alternatively you can purchase 3mm round foam seal and cut to length.

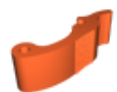
No supports are required.

Happy printing.

Model files



top-mmu-b.stl



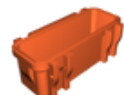
clipsx2.stl



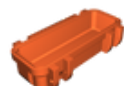
tpu-seal.stl



top.stl



bottom-deeper.stl



bottom.stl



top-mmu-a.stl

License ©

This work is licensed under a
[Creative Commons \(4.0 International License\)](#)



Attribution—Noncommercial—Share Alike

- ✗ | Sharing without ATTRIBUTION
- ✓ | Remix Culture allowed
- ✗ | Commercial Use
- ✗ | Free Cultural Works
- ✗ | Meets Open Definition