



Honeycomb storage wall



RostaP

[VIEW IN BROWSER](#)

updated 12. 4. 2022 | published 20. 3. 2022

Summary

Wall for attaching hooks and holders for your tools. You will create the wall according to your own idea.



3.88 hrs



1 pcs



0.28 mm



0.40 mm



PET



58 g



Prusa MINI /
MINI+

[Household](#) > [Other House Equipment](#)

Tags: [organizer](#) [wall](#) [hooks](#) [storage](#)

News

- March 20, 2022 added bigger hook
- March 21, 2022 added USB flash drive holder
- March 21, 2022 added hooks (12mm and 25mm, screwed with M3 screw)
- March 21, 2022 added box (screwed with M4x10 screw)
- March 21, 2022 added 2 wall parts (224x190 and 293x271)
- March 22, 2022 added SD card holder(screwed with M4x10 screw)
- March 22, 2022 added USB flash drive holder (screw in no need)
- March 22, 2022 added box (screw in no need)

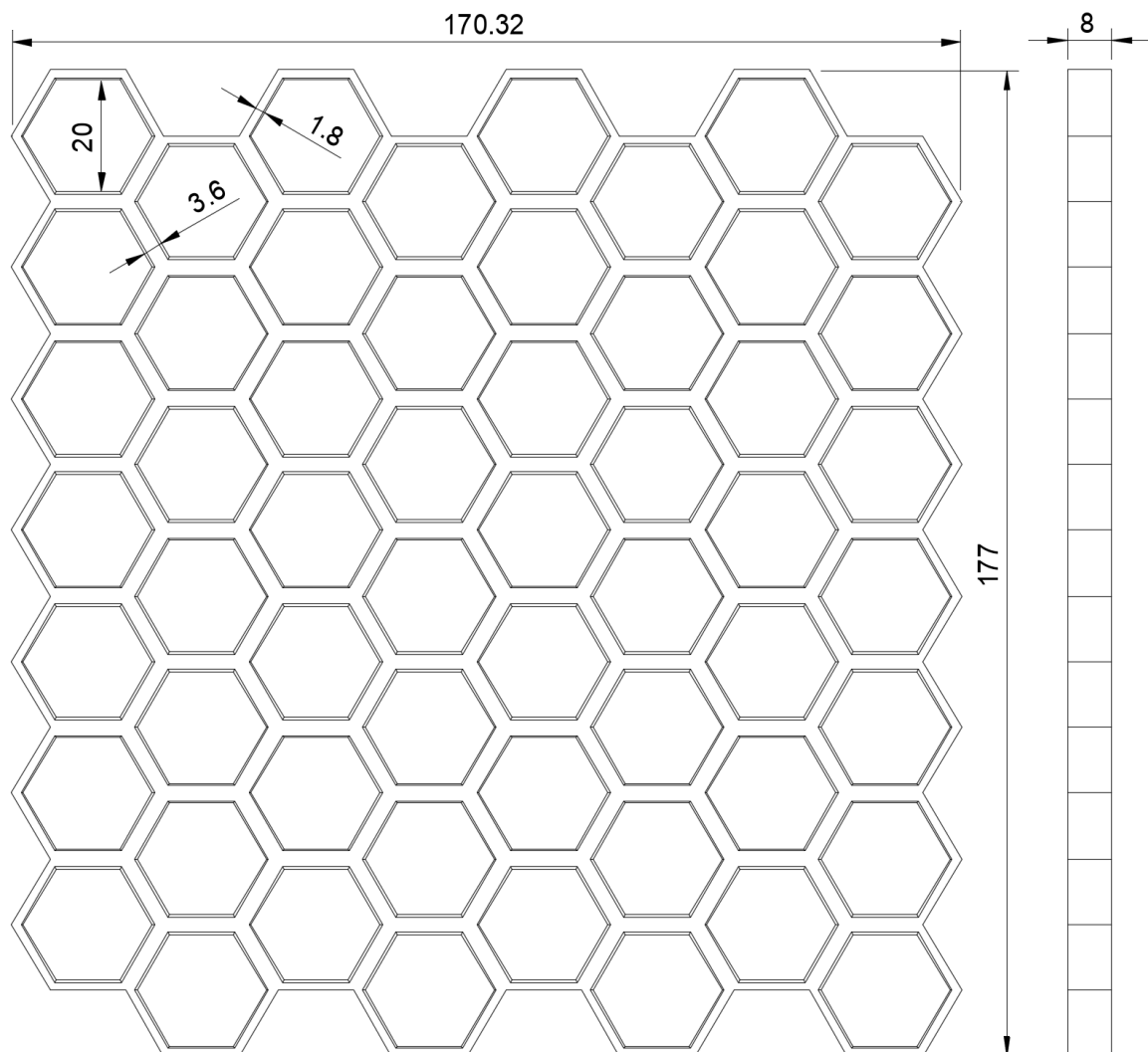
- March 24, 2022 added micro SD card holder (for 5 or 20 pieces)
- March 24, 2022 added micro SD card holder (for 5 or 20 pieces)
- April 4, 2022 added shelves (4 dimensions)
- April 6, 2022 Added drawers (found as a [remix](#))
- April 12, 2022 Added wrench hooks (2x)

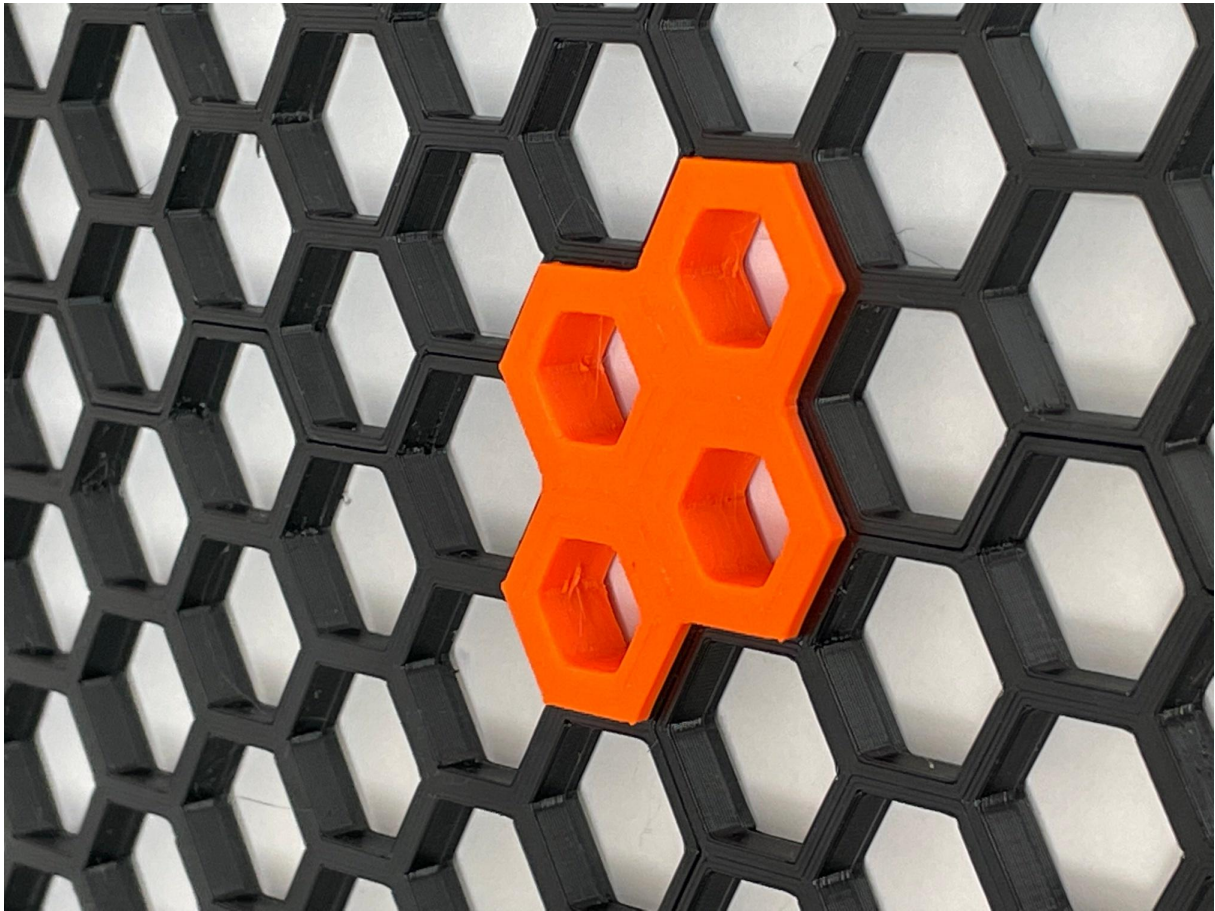
Don't forget to look at other [remixes](#) - there are a lot of interesting modifications and accessories

Honeycomb wall

The basic part of the wall is printable on the Prusa Mini printer. It is necessary to turn off the skirt or set the distance to 1mm in order for the part to fit it on the pad.

You can connect the basic parts of the wall together. You can connect it also with printable parts which can be used in various ways (you can use it for screwing to the wall, you can use it as a holder for hanger or as a holder for hook).



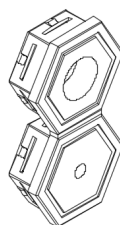
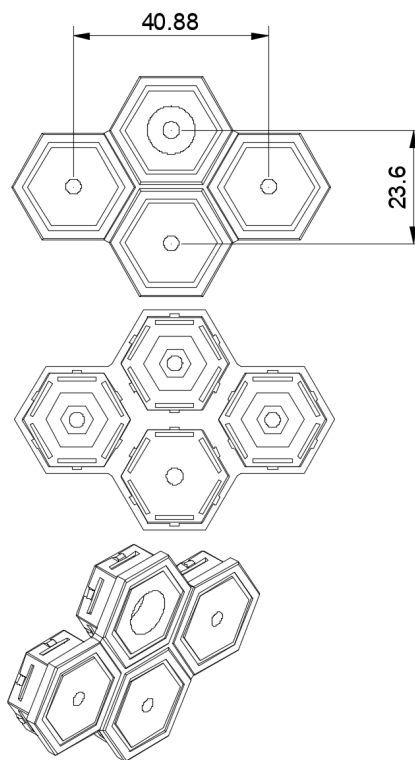
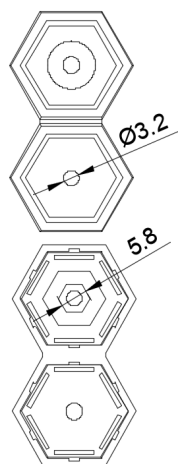
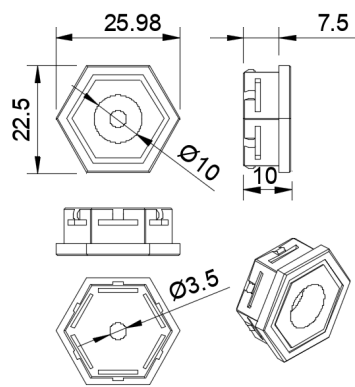


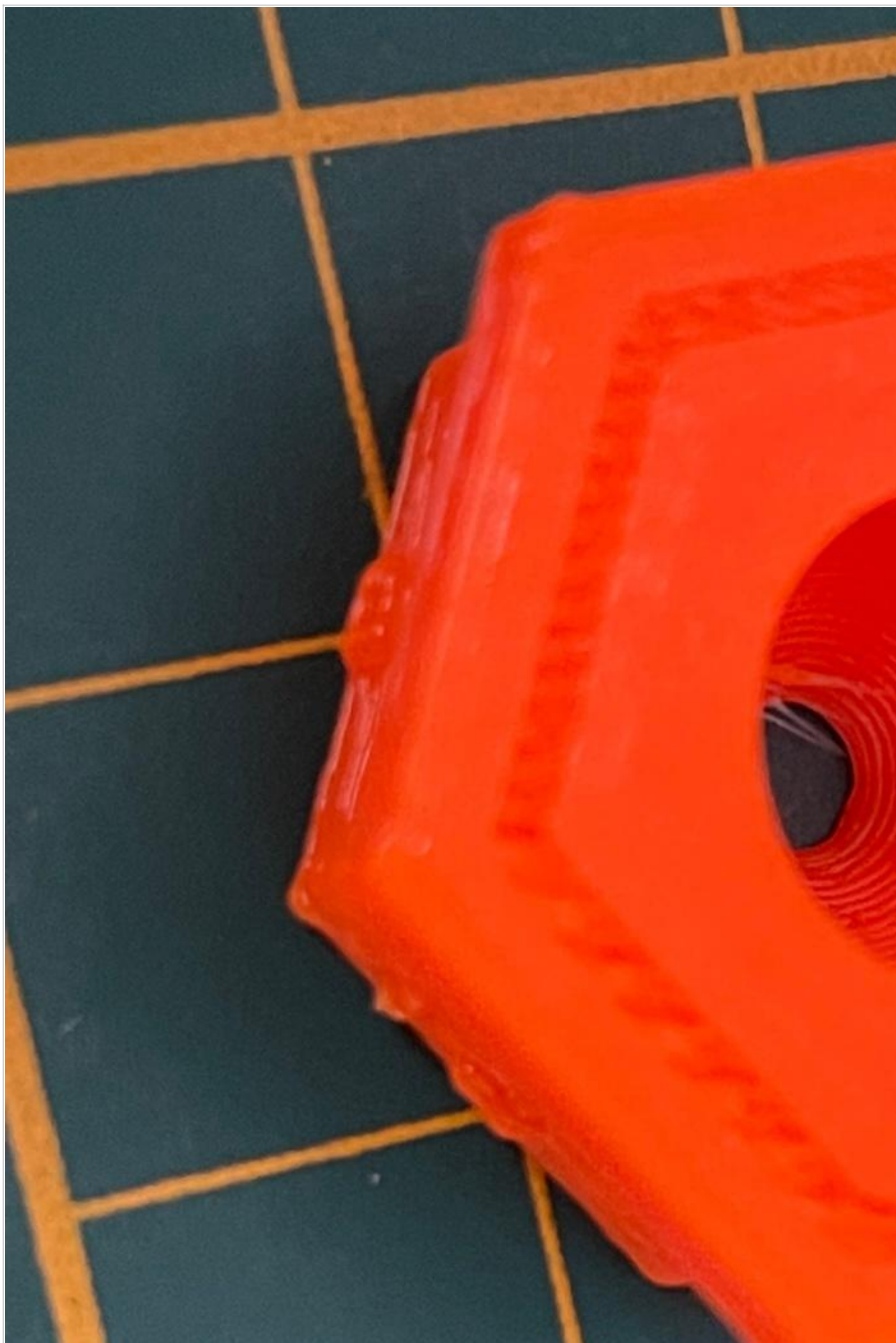
Printing settings

- layer height: 0.25 - 0.3
- perimeters: 3

Parts for attaching honeycombs to the wall

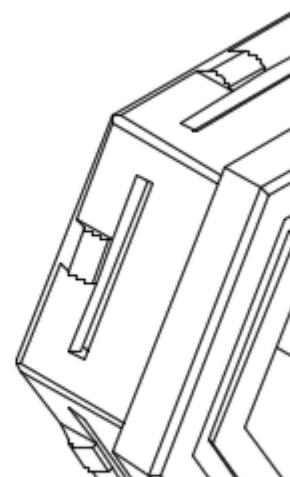
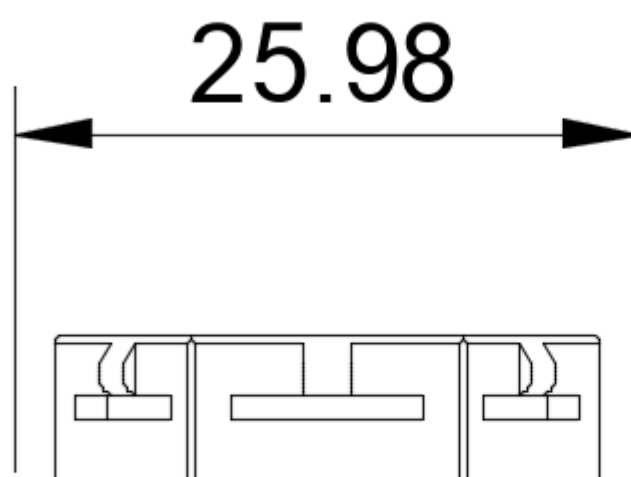
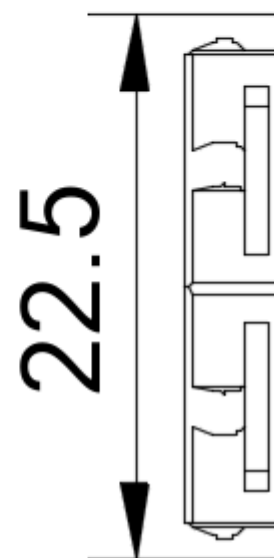
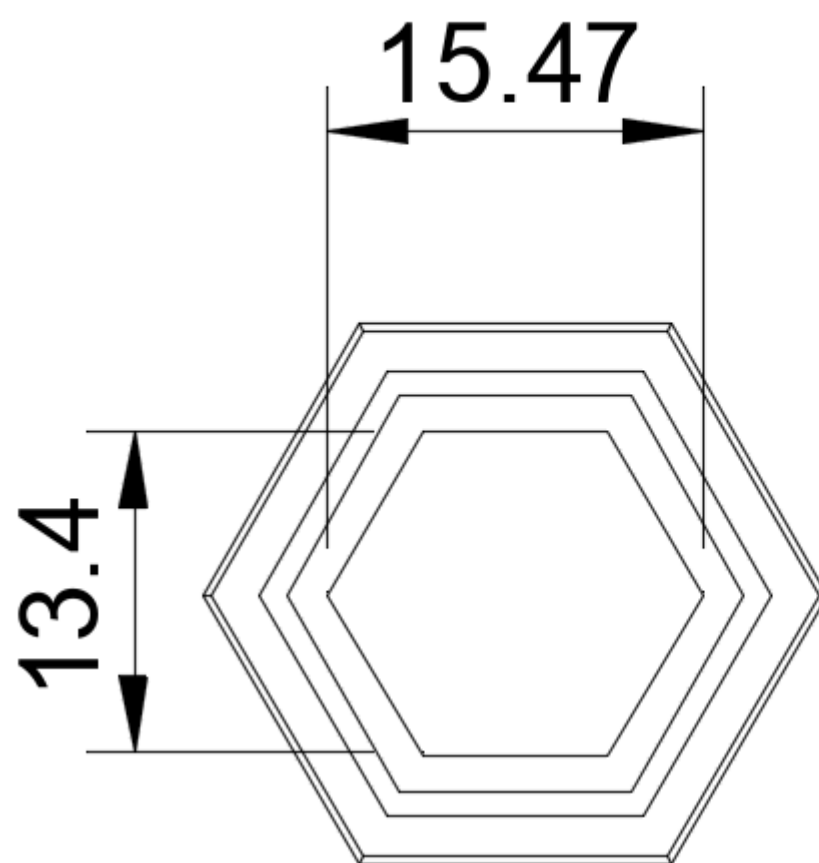
Some of the parts (which are orange on the picture) you can use for hanging to the wall or for connecting the basic parts together.

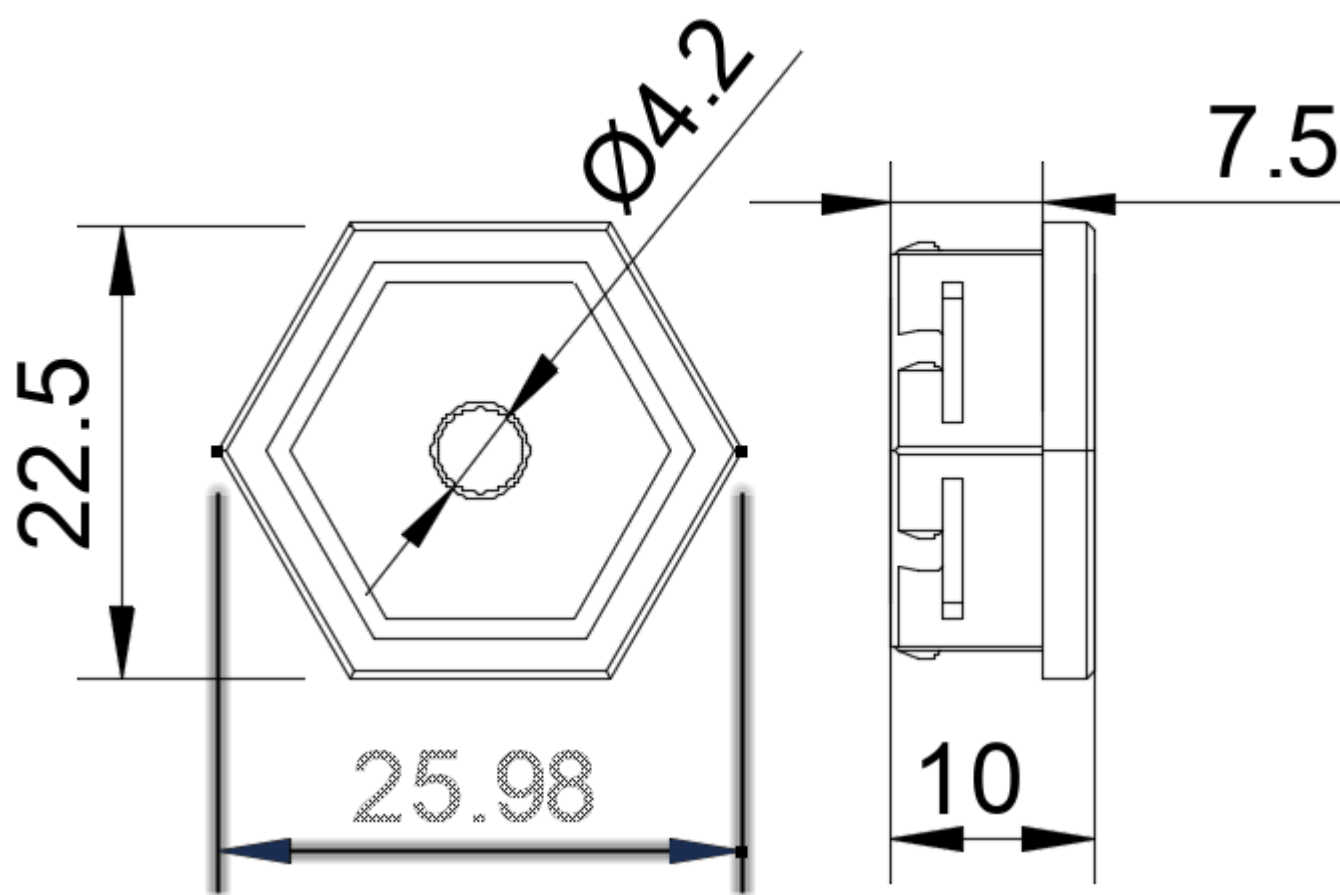


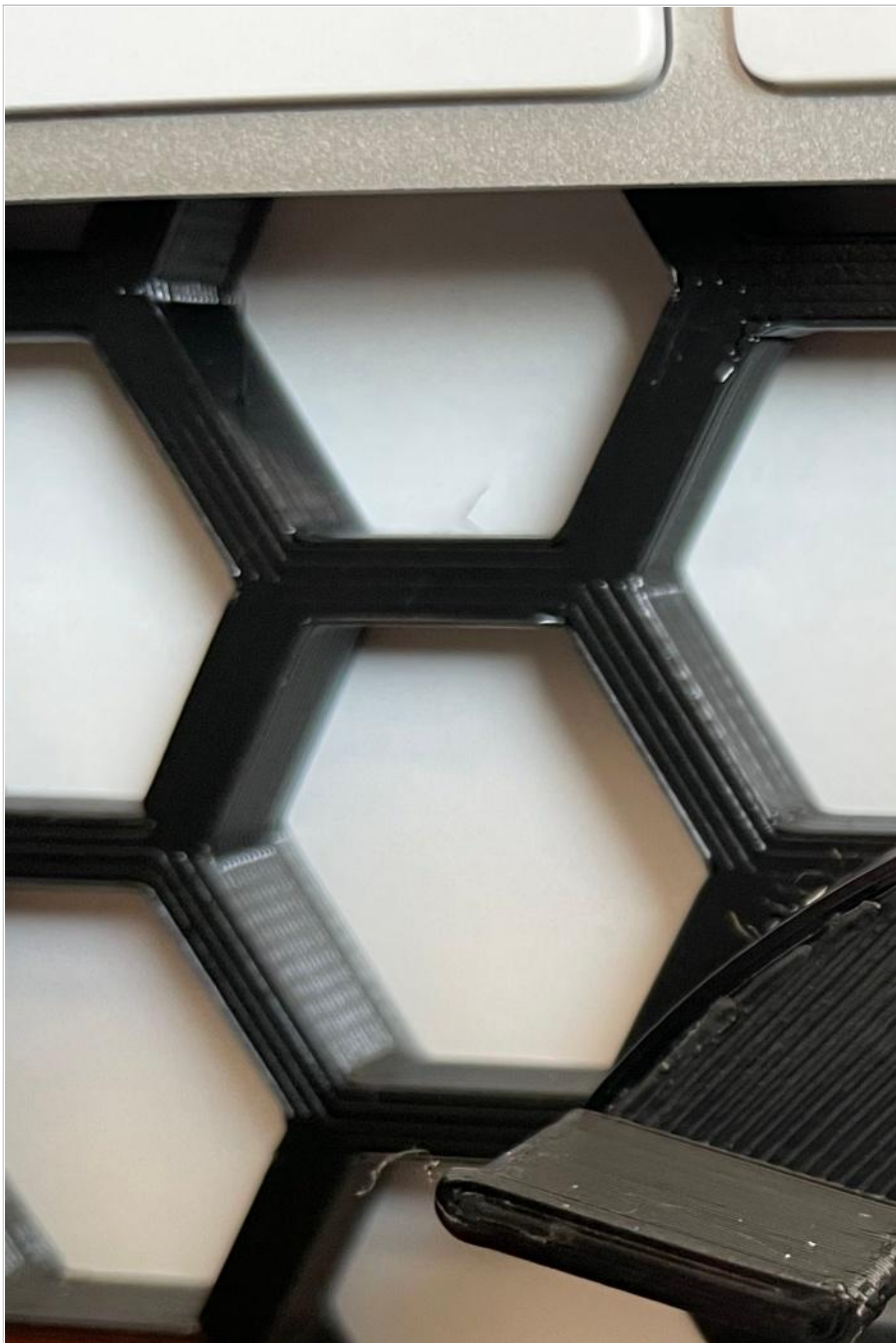


Fasteners and parts for attaching hooks and objects

There is added one part with the nut (size M3, M4, M5) inside which can be used for screwing whatever holders you want.



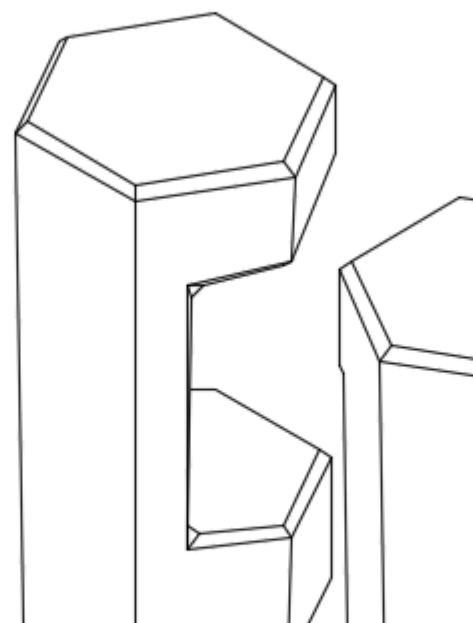
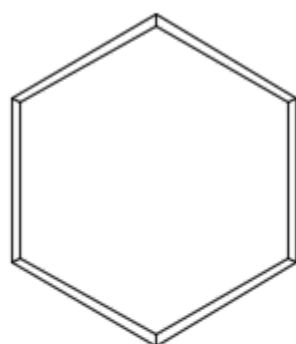
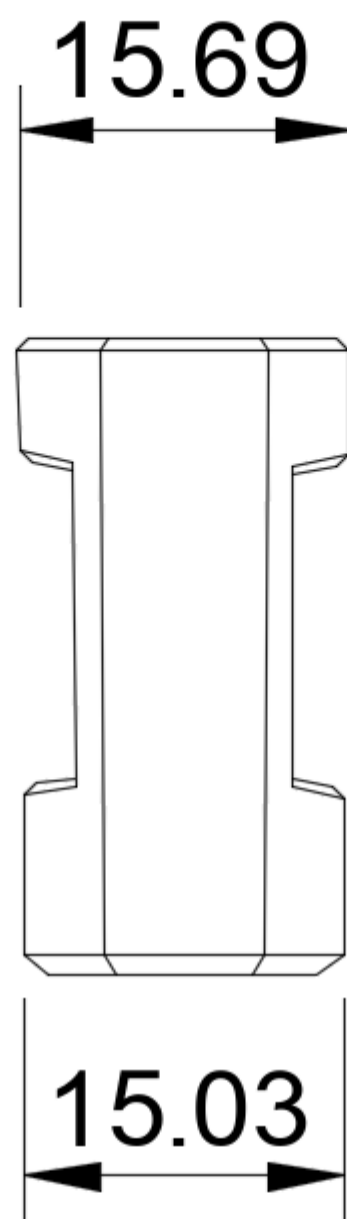
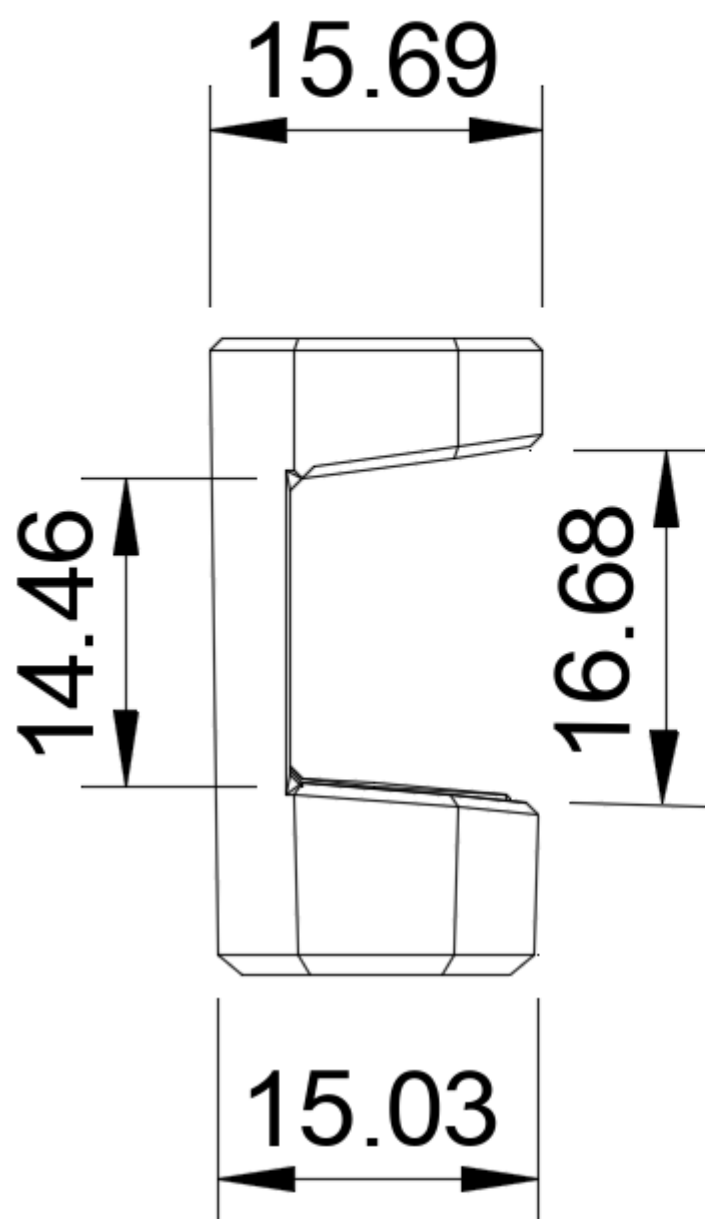




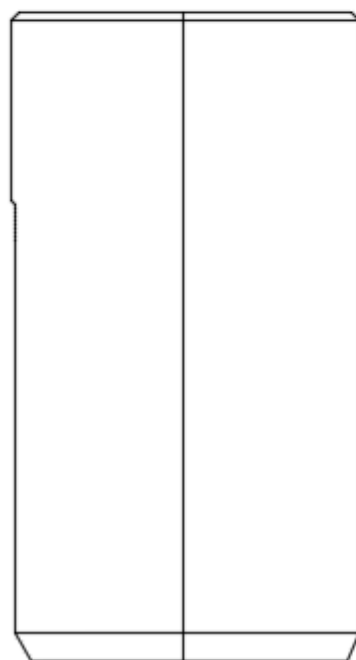
Hooks and holders

This is space for new holders and hooks which will be added as needed.

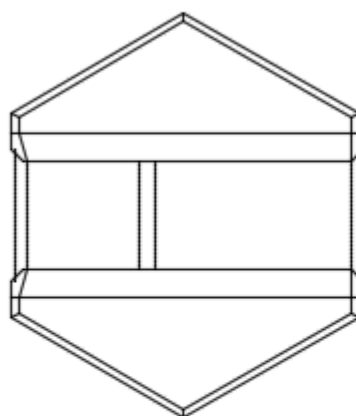
Hook bottom and side is prepared to insert to the empty insert part.



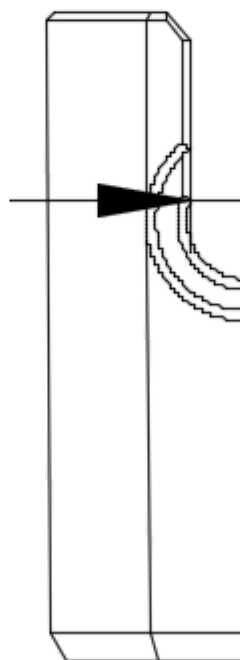
13.4



13.21



15.

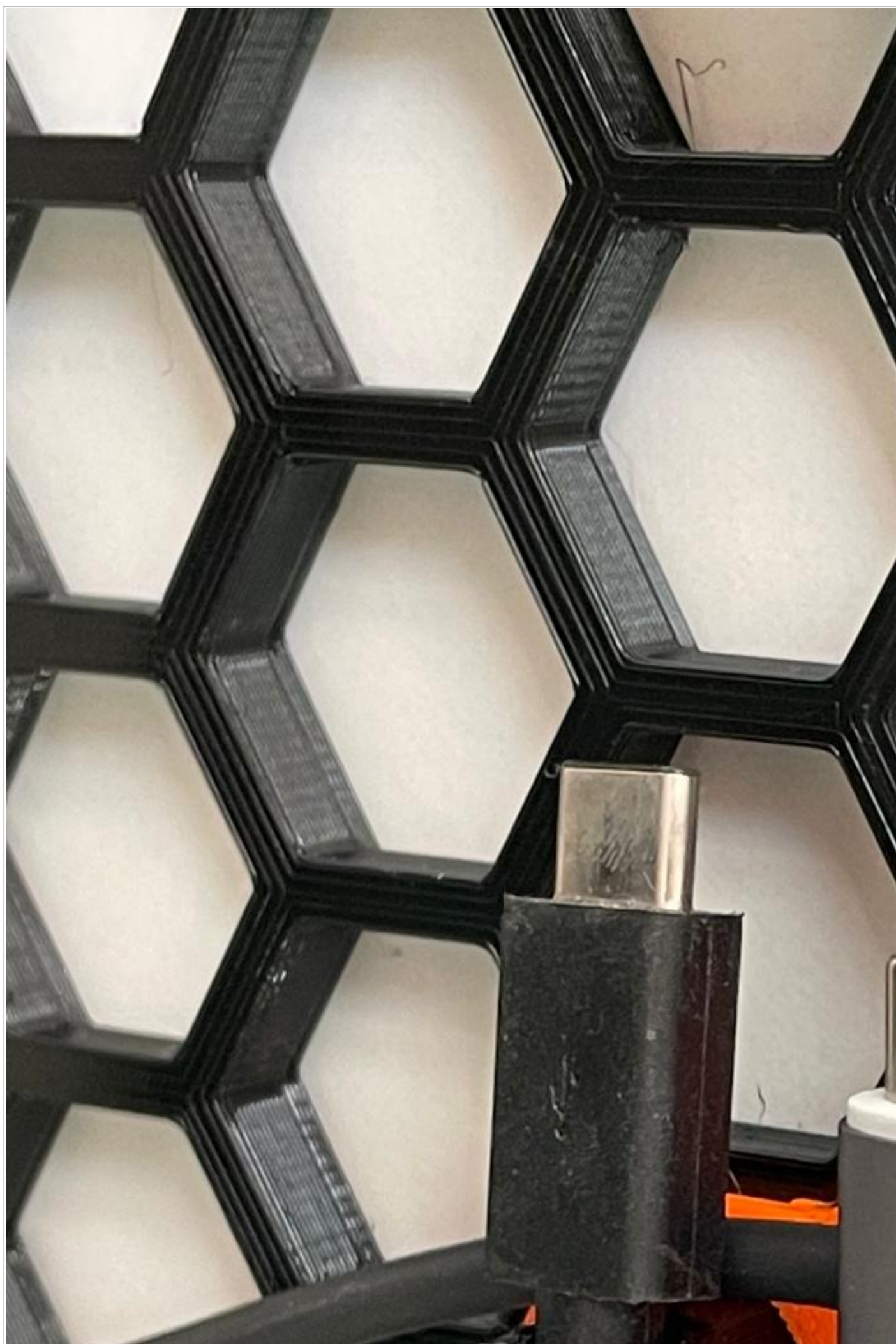


15.

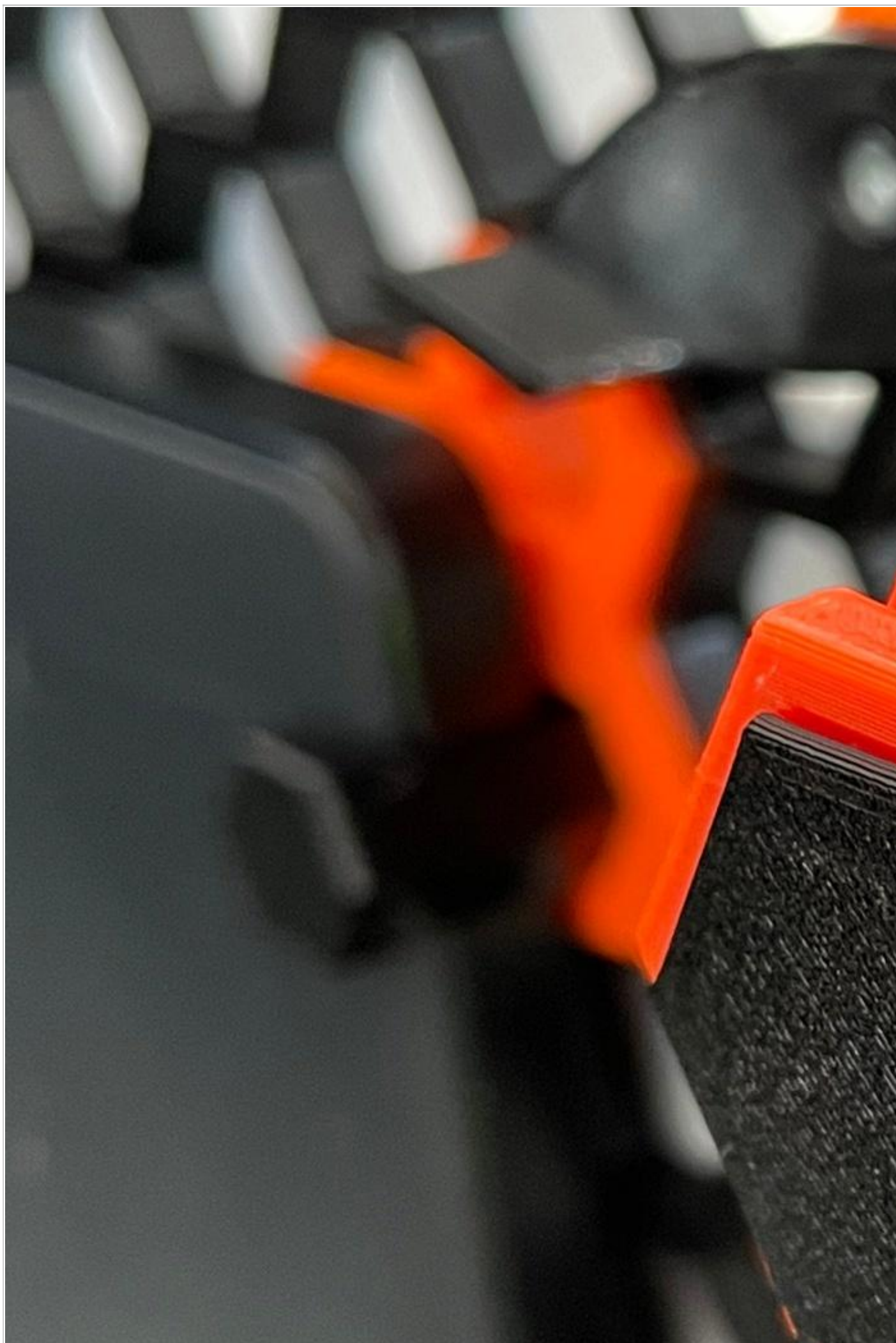


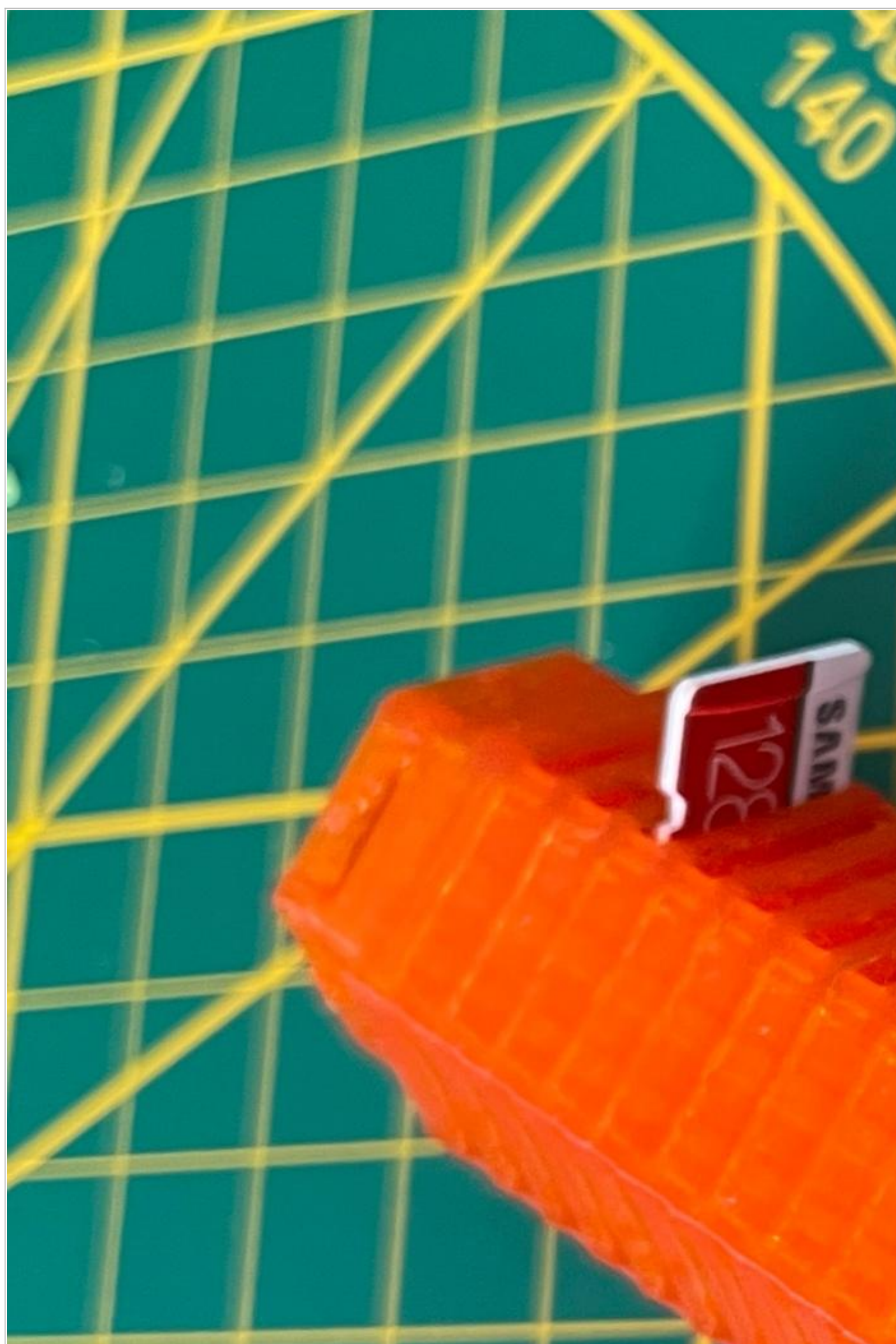
F19

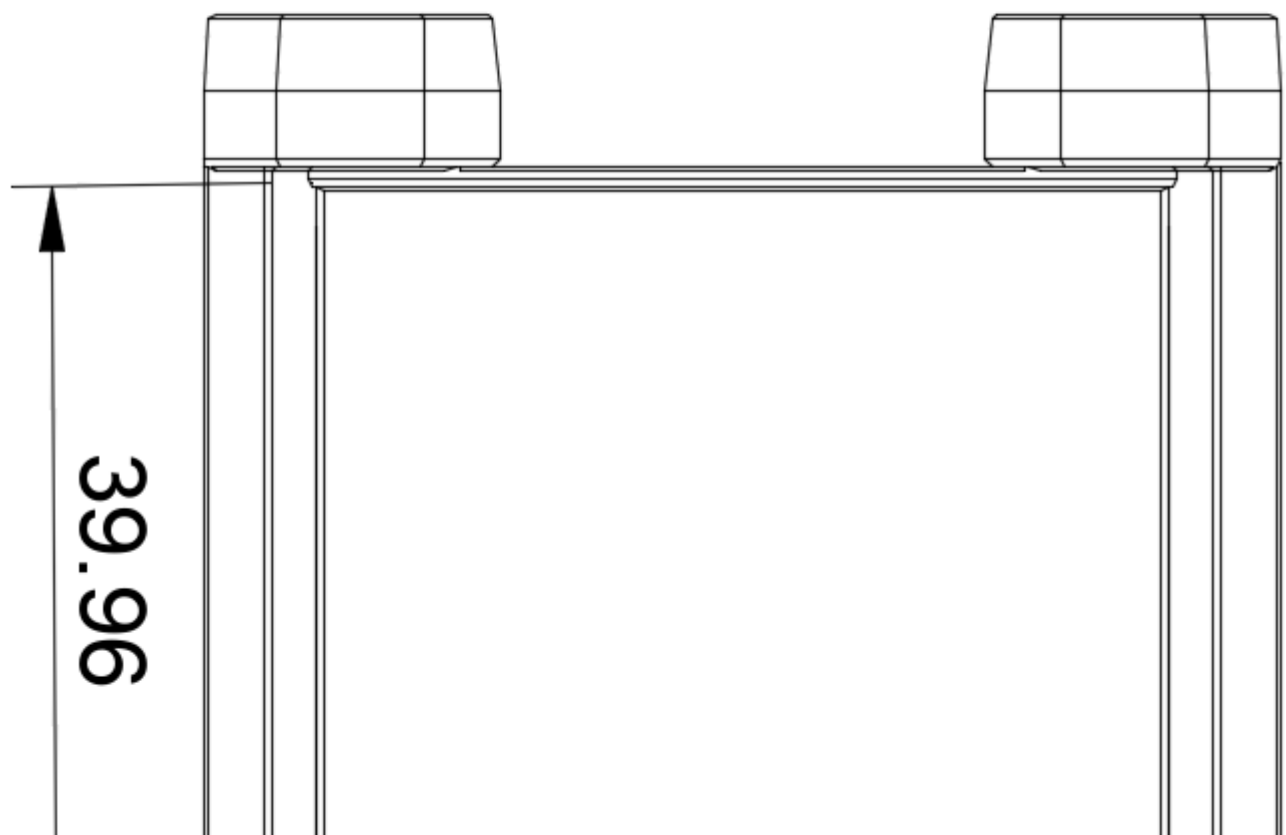
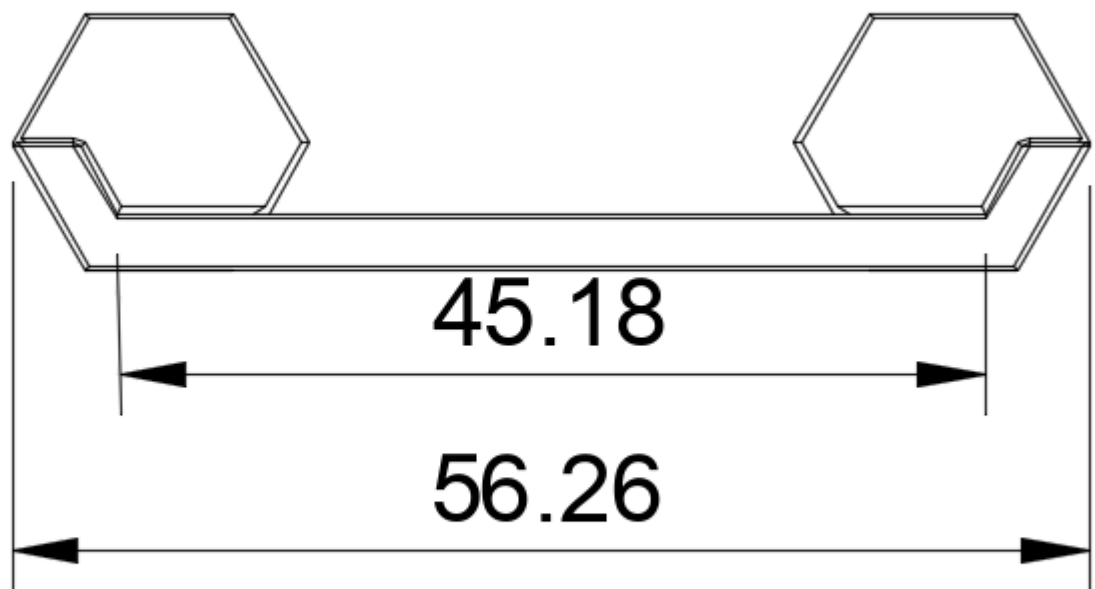








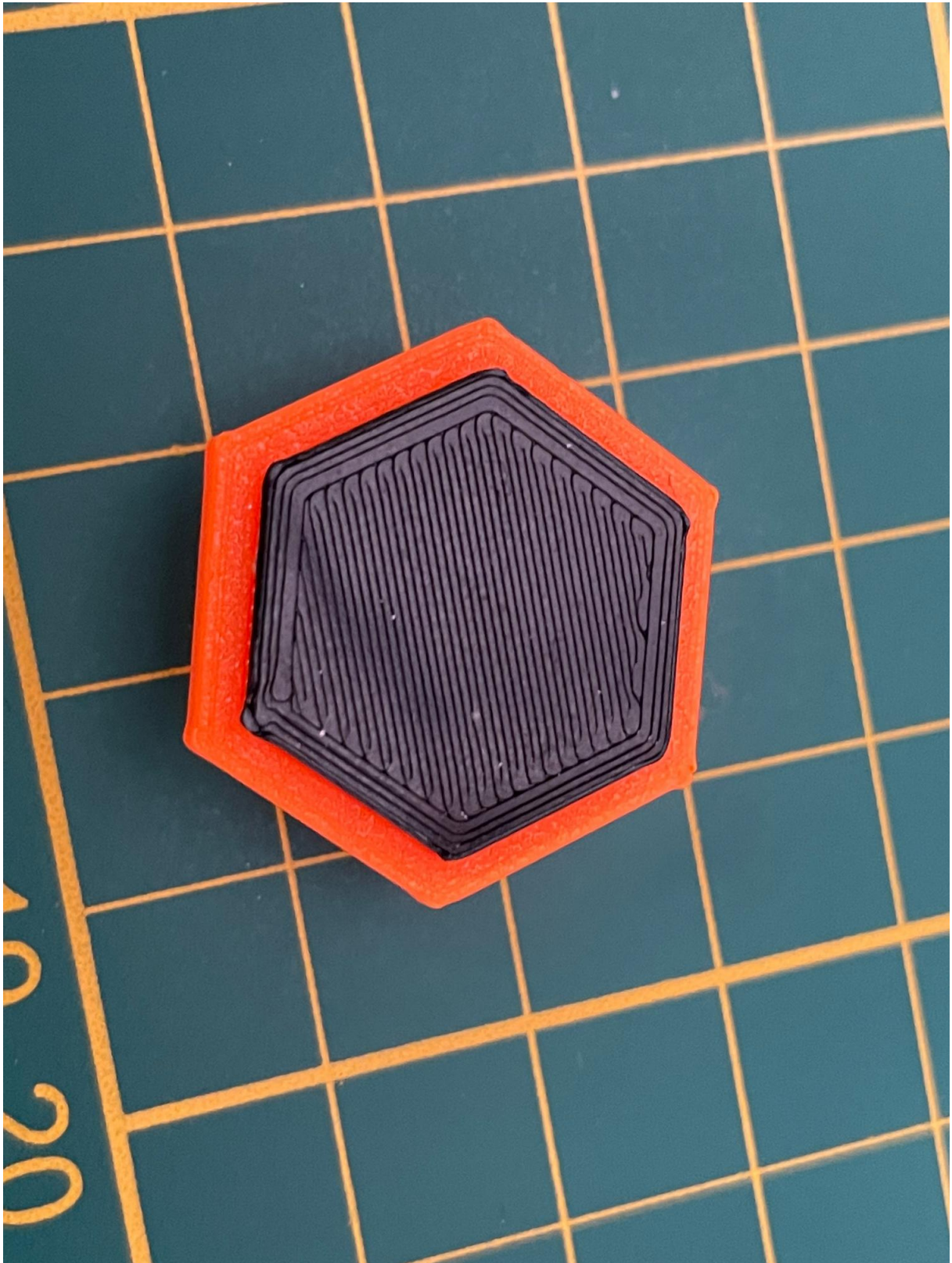




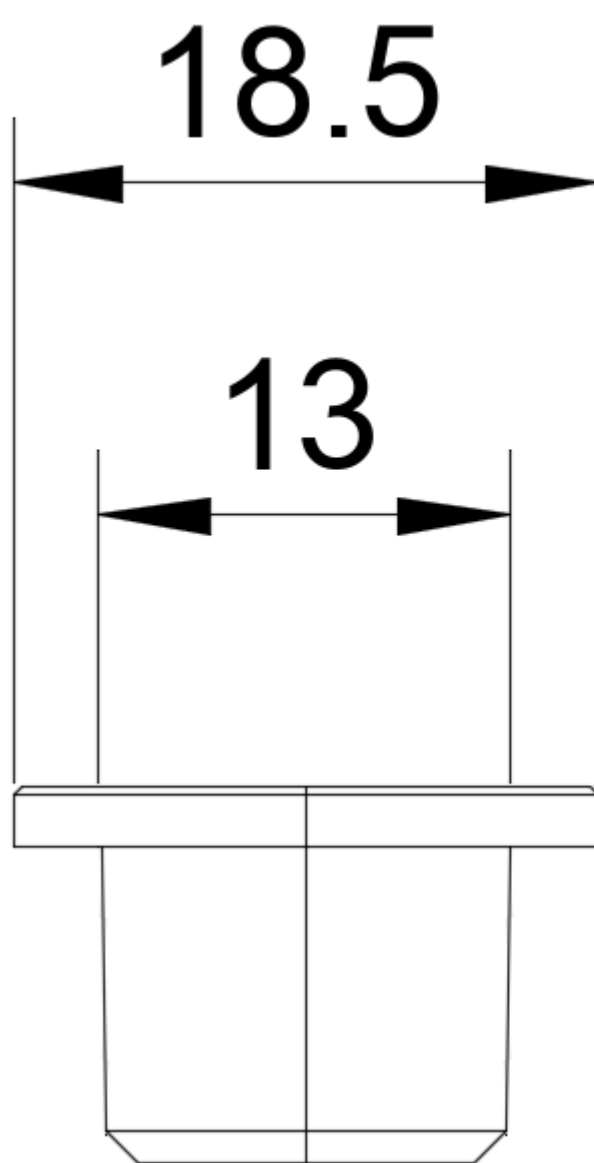


Other parts

This is cover for the connecting part which is used for hiding the screw.



And also you can use the second part (as shown in the picture) which can be used for additional attaching the honey comb to the wall.






1000

My printing settings for all inserts

- layer height: 0.2
- perimeters: 4
- infil: 20%

Model files

 shelves 4 files	
	shelf-3.stl
	shelf-4.stl
	shelf-1.stl
	shelf-2.stl

 Base STEP files 3 files	
	wall-honeycomb-part.step
	insert-empty.step



insert-hollow-for.step



Hooks and holders

23 files



hook-keyboard-side.stl



hook-keyboard-bottom.stl



hook-bottom.stl



screw-holder.stl



insert-cable-holder.stl



hook-side.stl



caliper-mount.stl



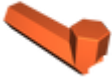
hook-to-empty.stl



hook-to-empty-long.stl



hook-12mm-for-m3.stl



hook-25mm-for-m3.stl



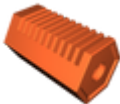
usb-holder.stl



box-and-usb-holder-cover.stl



box.stl



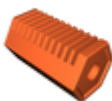
sd-card-holder.stl



sd-card-holder-cover.stl



box-without-screw.stl



sd-card-holder-without-screw.stl



usb-holder-without-screw.stl



5-micro-sd-card-holder.stl



20-micro-sd-card-holder.stl



wrench-hoks-2.stl



wrench-hoks-1.stl



Fasteners and parts for attaching hooks and objects

10 files



insert-hollow-dual.stl



double-m4.stl



insert-empty.stl

☐ base part - insert a hook into it



double-m5.stl



insert-with-m3.stl



insert-m4.stl



insert-hollow-tre.stl



insert-with-m3-dual.stl



insert-m5.stl



insert-hollow-for.stl



Parts for attaching honeycombs to the wall

5 files



insert-countersunk.stl



hexagon-countersung-and-hole.stl



insert-countersung-m3.stl



insert-for-countersunk-hole-3.stl



insert-countersunk-with-m3x3.stl



Other parts

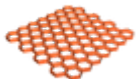
2 files



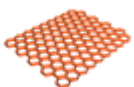
cover-countersunk.stl



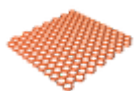
countersunk-to-hole.stl



wall-honeycomb-part.stl

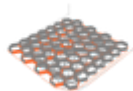


wall-honeycomb-224x190size.stl



wall-honeycomb-293x271-big-printer.stl

Print files



wall-honeycomb-part_028mm_petg_mini_3h53m.gcode

 PET  0.40 mm  0.28 mm  3.88 hrs  58 g  Prusa MINI / MINI+

License

This work is licensed under a
[Creative Commons \(4.0 International License\)](https://creativecommons.org/licenses/by-sa/4.0/)



Attribution-ShareAlike

-
- ✗ | Sharing without ATTRIBUTION
 - ✓ | Remix Culture allowed
 - ✓ | Commercial Use
 - ✓ | Free Cultural Works
 - ✓ | Meets Open Definition