



Bonsai Tree (Jewelry Display)



maximdivirgilio

[VIEW IN BROWSER](#)

updated 27. 10. 2023 | published 27. 10. 2023

Summary

This bonsai tree is an immediate 3D printing project. The final tree is about 12" long and 8" tall.

[Household](#) > [Home Decor](#)

Tags: [plant](#) [tree](#) [planters](#) [trees](#) [bonsai](#) [plantspot](#)
[bonsaipot](#) [bonsaiplant](#) [bonsaitree](#) [bonsaistand](#)

This project prints in 40! different pieces, all of which get super glued together.

The project is delicate and requires patience and care. It however results in a very, very nice decoration piece.

=====

This project requires:

- 150g of your filament of choice
- Superglue (CA glue)
- Small stones (Optional)
- Sand to weight the pot (Optional)

For this project I used:

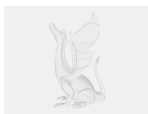
-BambuLab PLA-CF (Green)

-BambuLab PLA-CF (Grey)

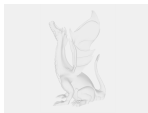
-Hatchbox Wood PLA (Dark)

Please feel free to chat me if you have any questions or confusion!

Model files



leaves.3mf



pot.3mf



trunk.3mf

License ©



This work is licensed under a
[Creative Commons \(4.0 International License\)](https://creativecommons.org/licenses/by-nc-sa/4.0/)

Attribution—Noncommercial—Share Alike

-
- ✗ | Sharing without ATTRIBUTION
 - ✓ | Remix Culture allowed
 - ✗ | Commercial Use
 - ✗ | Free Cultural Works
 - ✗ | Meets Open Definition