

Fully Customizable PET Bottle Watering Spike/ Plant Label



Joseph Clarke

[VIEW IN BROWSER](#)

updated 11. 5. 2022 | published 21. 3. 2022

Summary

Why not re-use those old PET drink bottles you have around and make a watering spike!

[Household](#) > [Outdoor & Garden](#)

Tags: [upgrade](#) [pot](#) [water](#) [plant](#) [upcycle](#) [recycle](#)
[garden](#) [petg](#) [label](#) [plasticbottle](#) [horticulture](#) [2litrebottle](#)

Introduction

Wasn't happy with the selection of water spikes out there so decided to create my own to fit whatever needs you may have! And while you're at it why not have it double as a plant label!

This spike can be printed in as little as 30 minutes with just 6 grams of filament (that's less plastic than the bottle itself!). And due to its customizable nature it can fit into a pot or garden bed of any size and can have smaller or larger holes to suite plants with different water requirements.

How To Make!

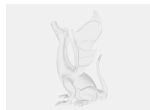
1. Get a PET bottle (the kind you get soda in) of whatever size you'd like (as long as it uses the standard PCO1881 thread).
2. Generate your model (or use one of the included example models), plop the stl into your slicer of choice in the orientation it defaults to, print at 0.3mm of better layer height, no need for supports!
3. Print away
4. Screw the bottle into the spike
5. Stick in a pot or garden bed and enjoy (I'm sure your plants will enjoy it too!)

Note:

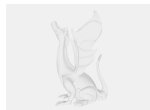
To customize the model you will need [openscad](#), simply download the version for your platform of choice, place all the downloaded files into one folder, open "Water Spike.scad" and use the drop down boxes on the left labeled "Advanced" and "Basic" to open up the options, once you're done setting things how you want press "F6" to render and then click "File>Export>Export As STL" and save the model to wherever you'd like. Happy printing!

Feel free to comment with any issues or feature requests you have, I'm always happy to help.

Model files



water-spike.scad



neckscaps.scad



28pco1881_pre_rendered.stl



spike_big_holes.stl



spike_mini.stl



spike_tomato.stl



default_spike.stl



spike_lettuce.stl



spike_lots_of_holes.stl



default-with-lip-temporary.stl

License ©

This work is licensed under a
[Creative Commons \(4.0 International License\)](https://creativecommons.org/licenses/by-sa/4.0/)



Attribution-ShareAlike

-
- ✗ | Sharing without ATTRIBUTION
 - ✓ | Remix Culture allowed
 - ✓ | Commercial Use
 - ✓ | Free Cultural Works
 - ✓ | Meets Open Definition

