

## Zel's Refrigerator Note Toggle



[VIEW IN BROWSER](#)

updated 6. 6. 2022 | published 31. 5. 2022

### Summary

Toggle your notes securely to your fridge without having to remove the magnet! Just toggle it.



0.43 hrs



4 pcs



0.20 mm



0.40 mm



PLA



5 g



Prusa  
MK3/S/S+

[Household](#) > [Kitchen](#)

Tags: [magnet](#) [refrigerator](#) [refrigeratormagnet](#) [toggleswitch](#)  
[zelrick](#) [zelrick42](#)

Fridge magnets are great but I don't like that most of them put the magnet dangerously close to the finish on that expensive fridge and removing them to put up a new note or change a picture can be a hassle, if your hands are full. This Refrigerator note toggle fixes these issues by embedding the magnets in the print and having a magnet in both ends so no need to remove it just toggle it to free your item.

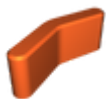
I have included two versions.

I used 10x2.6mm magnets in both versions, other sizes will probably work fine too. The slots are 11x3mm. Link to the Magnets I used <https://amzn.to/3tauAvd>

One version pauses the print so you can insert the magnets and then finish the print with the magnets imbedded inside. The 3MF file and the Gcodes include the pause at the correct height. I suggest putting a bit of CA (super) glue in the slot with the magnets.

The second version doesn't require a print pause, and has plugs to glue into the slots after you insert the magnets, to tidy up the look.

## Model files



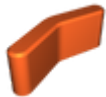
**refrigerator-toggle-pause-to-insert-magnets-mk3.3mf**

---



**refrigerator-toggle-plugs-mini.3mf**

---



**refrigerator-toggle-pause-to-insert-magnets-mini.3mf**

---



**refrigerator-toggle-plugs-mk3.3mf**

---



**refrigerator-toggle.stl**

---



**refrigerator-toggle-plugs.stl**

# Print files



## refrigerator-toggle-pause-to-insert-magnets\_02m.gcode

🌀 PLA 📏 0.40 mm 📐 0.20 mm ⌚ 0.43 hrs ⚖️ 5 g 🖨️ Prusa MINI / MINI+



## refrigerator-toggle-plugs\_02mm\_pla\_mini\_27m.gcode

🌀 PLA 📏 0.40 mm 📐 0.20 mm ⌚ 0.45 hrs ⚖️ 4 g 🖨️ Prusa MINI / MINI+



## refrigerator-toggle-plugs-mk3\_02mm\_pla\_mk3s\_29m.gcode

🌀 PLA 📏 0.40 mm 📐 0.20 mm ⌚ 0.48 hrs ⚖️ 4 g 🖨️ Prusa MK3/S/S+



## refrigerator-toggle-pause-to-insert-magnets-mk3.gcode

🌀 PLA 📏 0.40 mm 📐 0.20 mm ⌚ 0.46 hrs ⚖️ 4 g 🖨️ Prusa MK3/S/S+

# License ©



This work is licensed under a  
[Creative Commons \(4.0 International License\)](https://creativecommons.org/licenses/by-nc-sa/4.0/)

**Attribution—Noncommercial—Share Alike**

- ✗ | Sharing without ATTRIBUTION
- ✓ | Remix Culture allowed
- ✗ | Commercial Use
- ✗ | Free Cultural Works
- ✗ | Meets Open Definition