



Deer



mishkin2

[VIEW IN BROWSER](#)

updated 1. 5. 2022 | published 1. 5. 2022

Summary

These files are designed for the most part for laser cutting.

[Art & Design](#) > [Wall-mounted](#)

These files are designed for the most part for laser cutting. But if you are not confused by the small size, you can also print them on a 3D printer.

To increase the size, you can cut these models into pieces, print them separately and then connect them with [glue](#).

Download the files you need one at a time by clicking the "Upload" button each time. If you want to download all the files in one click, [click here](#).

STL files are ready for printing on a 3D printer with a maximum print area size of 210x200. If your table size is larger, you can easily scale it to fit your size. To make a large-sized version of metal, wood or plastic, as in the picture, you will need the help of a laser cutter. To do this, I added dxf and svg files.

Wall mounting can be done using [wall mounting](#). It must be printed additionally and glued with [glue](#) to the main decor. Then fix it on the wall with nails or screws or use [double-sided tape](#).

To achieve the wow effect, you need to place an [LED strip](#) on the back of the decor.

Model files



bird1.stl



bird3.stl



bird2.stl

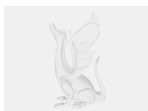


deer.stl



deer.dxf

Other files



deer.svg

License

This work is licensed under a
[Creative Commons \(4.0 International License\)](https://creativecommons.org/licenses/by-nc/4.0/)

Attribution-NonCommercial



- ✘ | Sharing without ATTRIBUTION
- ✓ | Remix Culture allowed
- ✘ | Commercial Use
- ✘ | Free Cultural Works
- ✘ | Meets Open Definition