

Low Poly Wall Shark



[VIEW IN BROWSER](#)

updated 29. 4. 2022 | published 28. 4. 2022

Summary

Low poly shark with wall mount.

[Art & Design](#) > [Wall-mounted](#)

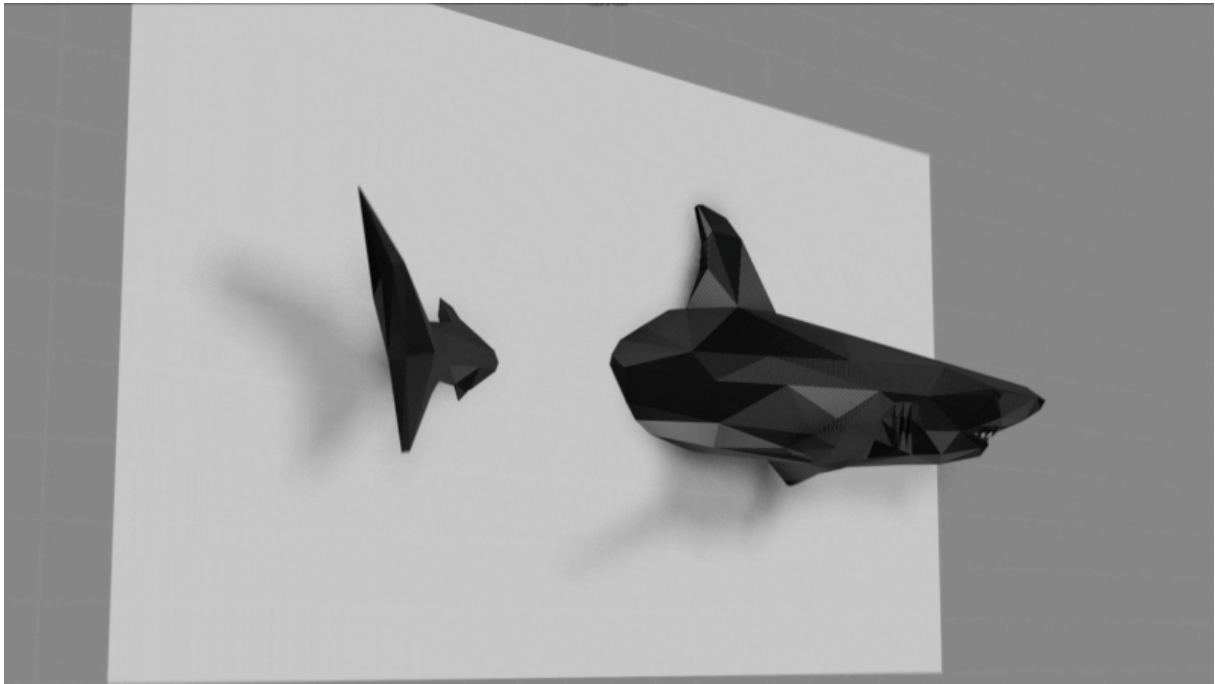
Tags: [wall](#) [lowpoly](#) [animal](#) [wallmount](#) [shark](#)

Low Poly Wall Shark

Low poly shark with wall mount.

With the original scale and spacing, once placed, it measures 395mm.

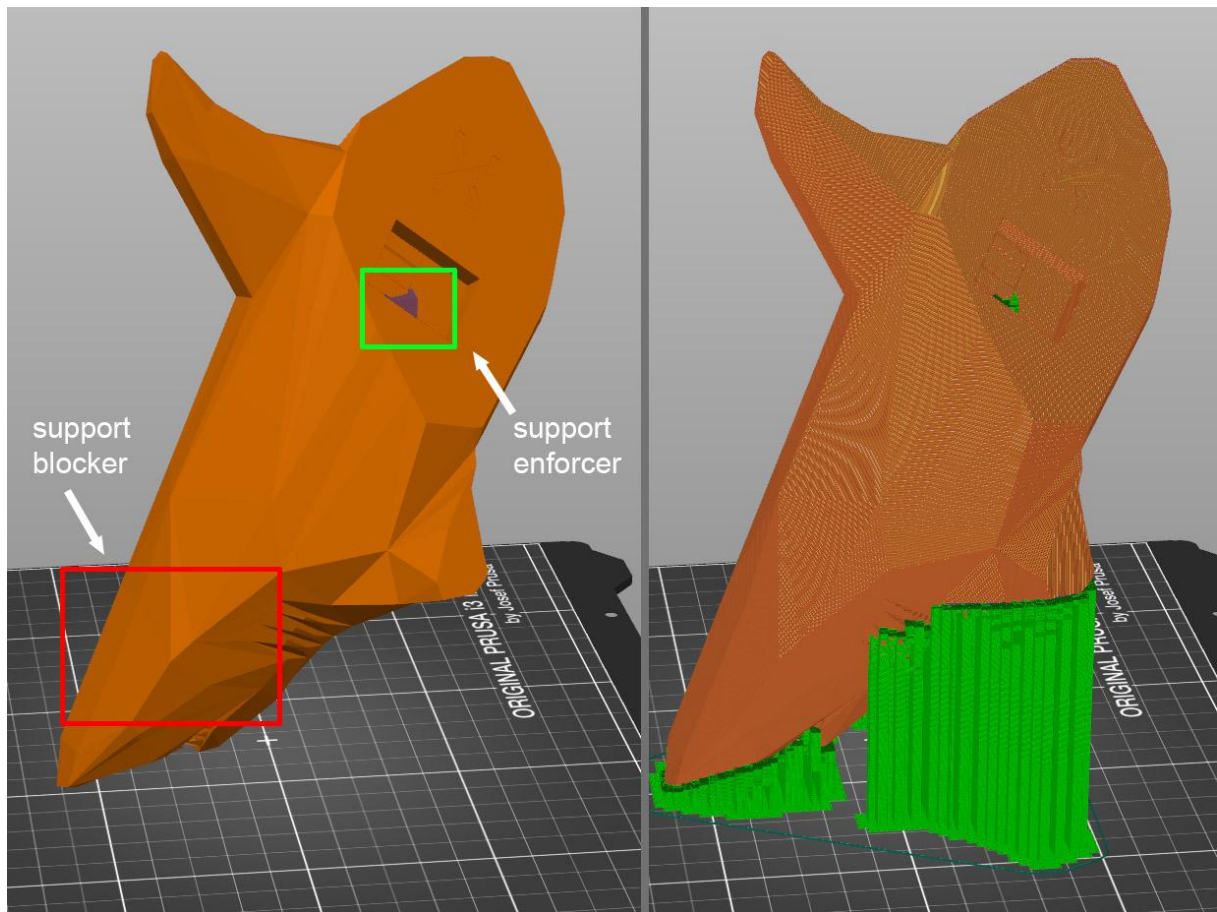
You can use the template to test how it looks on the wall and to easily mark the drilling points while keeping the original distance.



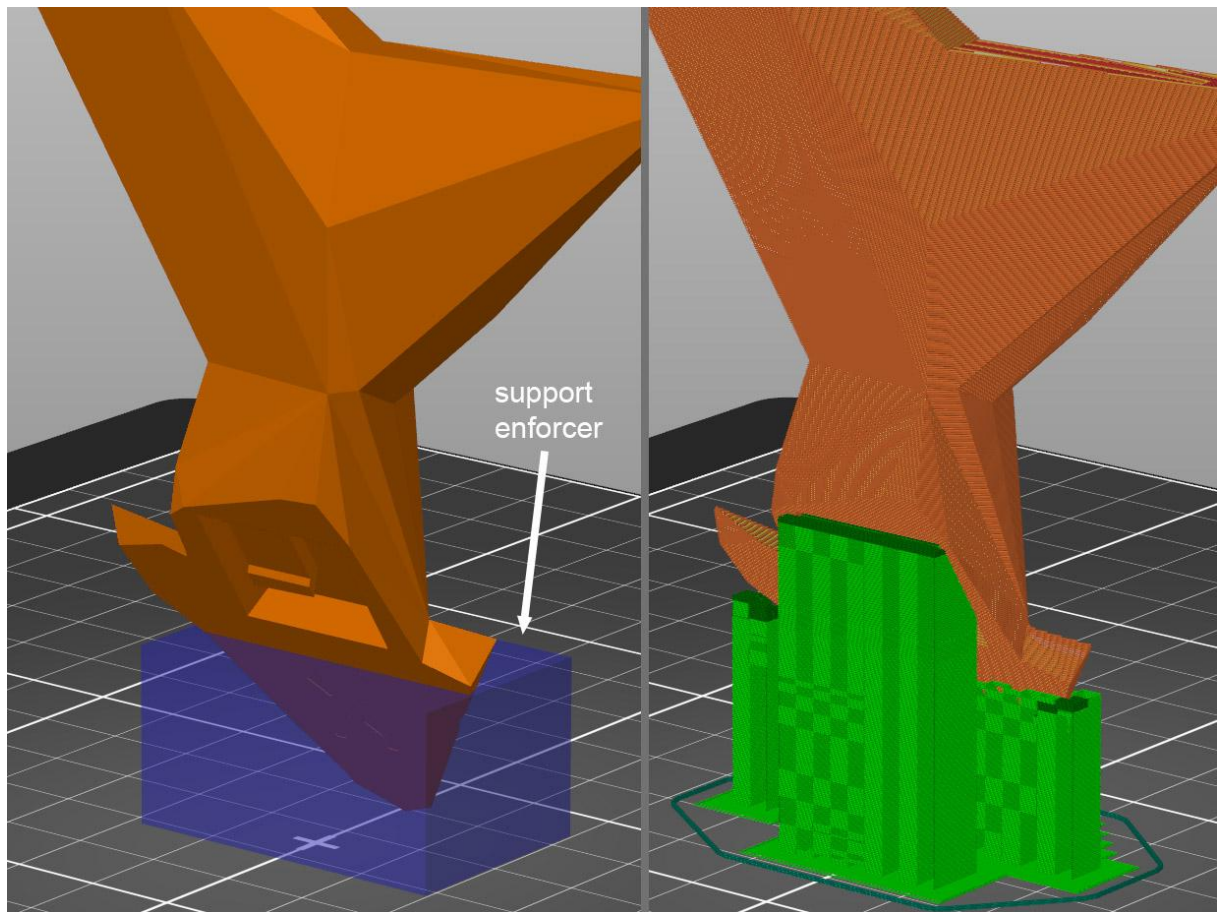
There are 2 models of the head and the tail. The original and one oriented as I printed them.

The head is placed vertically to avoid supports behind the teeth, with a modifier (support blocker) inside the mouth.

On the hook I used another small modifier cube to force them (support enforcer).

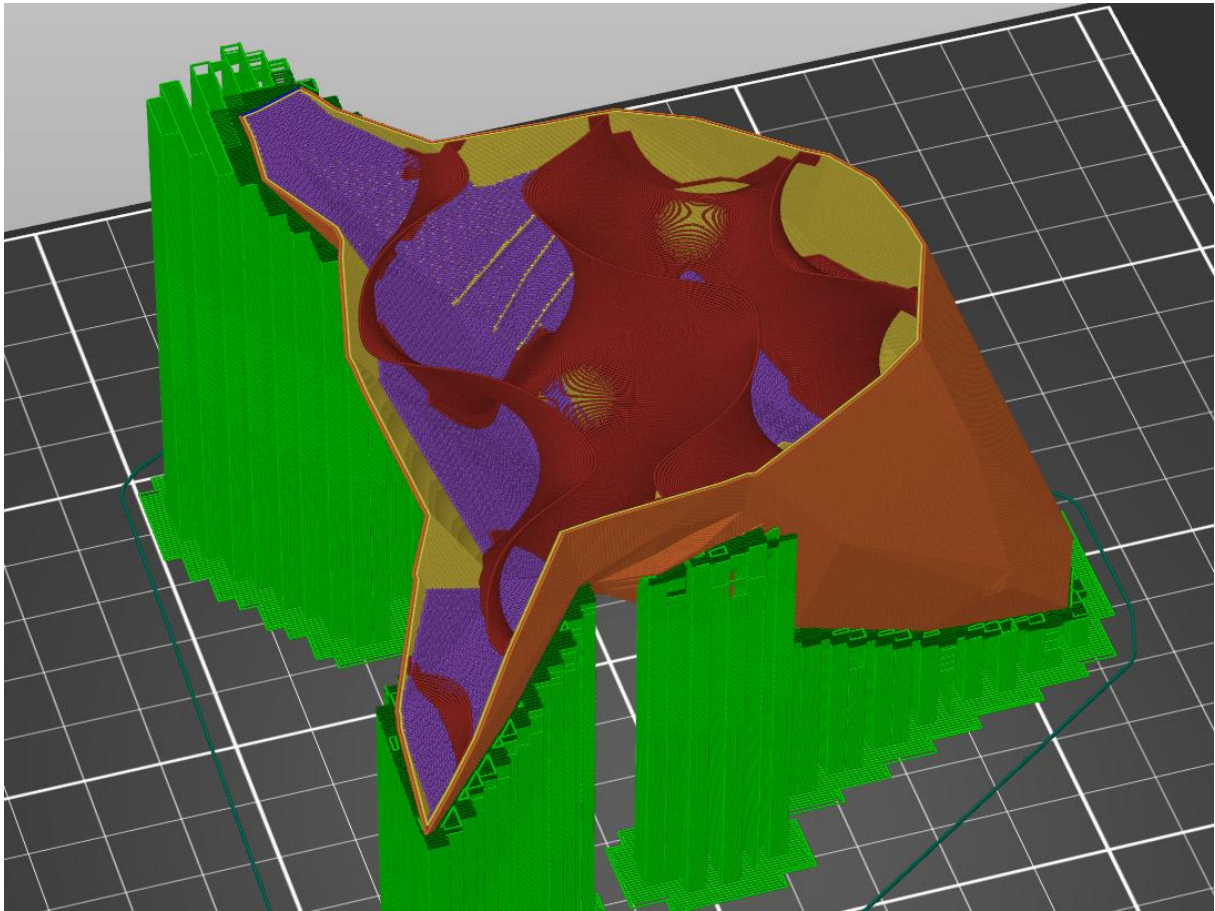


For the tail I also forced supports in the lower part so that it would be well attached to the bed.



I only used 2% infill (gyroid) to make it lightweight.

But with the oriented part you need a little bit of infill under the left corner of the hook base. You can add an infill modifier for increasing the density there, otherwise the corner will be printed in midair.



Model files



head.stl



head_oriented.stl



head_hook.stl



tail.stl



tail_oriented.stl



tail_hook.stl



template.stl

[Find source .stl files on Thingiverse.com](https://www.thingiverse.com)

License ©



This work is licensed under a
Creative Commons (4.0 International License)

Attribution—Noncommercial—Share Alike

- ✗ | Sharing without ATTRIBUTION
- ✓ | Remix Culture allowed
- ✗ | Commercial Use
- ✗ | Free Cultural Works
- ✗ | Meets Open Definition