



## Bicycle wheelset wall mount



horrovac

[VIEW IN BROWSER](#)

updated 25. 4. 2022 | published 25. 4. 2022

### Summary

Space economic storage for (road) bicycle wheelsets



1.59 hrs



1 pcs



0.20 mm



0.40 mm



ASA



15 g



Prusa MINI /  
MINI+

[Hobby & Makers](#) > [Organizers](#)

Tags: [cycling](#) [mount](#) [roadbike](#) [storage](#) [wall](#) [wheels](#)  
[wheelset](#)

A simple hook to keep wheelsets out of the way on the wall. first hang one wheel (preferably the front one since it's narrower) by the rim on the upper hook, and then hang the knob end of the quick release of the other wheel into the claw. The cassette (if installed) should be clear of the rim and the spokes, but do take care not to scratch or chip anything.

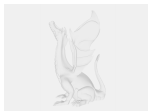
Print in something strong like PETG or ASA, and use 6x30 wall plugs (or longer) and 5x40 (or longer) wood screws to attach to the wall. Make sure the mount is well attached. If you insist on hanging your wheels above your Ming period vase and Murano glass collection that sits right above the king-size aquarium, you're on your own. You gain the most space if you

mount it high up, but it's a bad idea to mount it too close to the ceiling.  
Don't ask me how I know.

## Model Files



**wheelset\_wall\_mount-body.amf**



**wheelset\_wall\_mount.fcstd**

## Print Files



**wheelset\_wall\_mount-body\_02mm\_asa\_mini\_1h36m.gcode**

ASA 0.40 mm 0.20 mm 1.59 hrs 15 g Prusa MINI / MINI+

## License

This work is licensed under a  
[Creative Commons \(International License\)](#)



**Public Domain**

- 
- ✓ | Sharing without ATTRIBUTION
  - ✓ | Remix Culture allowed
  - ✓ | Commercial Use
  - ✓ | Free Cultural Works
  - ✓ | Meets Open Definition