



Planters with Integrated Saucer



kloydeb

[VIEW IN BROWSER](#)

updated 23. 9. 2022 | published 23. 9. 2022

Summary

Simple planter with a saucer and vent holes. can be used as decoration or for housing small plants.

[Household](#) > [Outdoor & Garden](#)

Tags: [planter](#) [pot](#) [saucer](#)

I printed these upside-down with tree supports for the saucer and inner pot. Brim helped the supports stay attached to build plate. I may add more designs and photos as I am really enjoying designing and printing these.

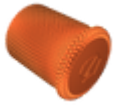
Model files



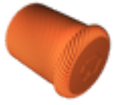
basic-planter.stl



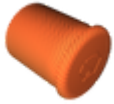
diamond-helix.stl



knurled-helix.stl



helix-ribbed-planter.stl



inverse-helix-corrugated-planter.stl

License

This work is licensed under a
[Creative Commons \(4.0 International License\)](https://creativecommons.org/licenses/by/4.0/)



Attribution

- ✗ | Sharing without ATTRIBUTION
- ✓ | Remix Culture allowed
- ✓ | Commercial Use
- ✓ | Free Cultural Works
- ✓ | Meets Open Definition