



Belt 2.2

 **Printschnitzel.at**

[VIEW IN BROWSER](#)

updated 25. 4. 2022 | published 3. 2. 2020

Summary

Belt print-in-place

[Fashion](#) > [Other Fashion Accessories](#)

Tags: [fashion](#) [belt](#) [accessories](#)

This is a wearable, articulated, print in place, super fashionable 3d printed belt.
Enjoy!

Print instructions

Blank buckle

If you want to support me get the belt without a logo here:

<https://www.printschnitzel.at/belt>

You can always remove the Logo with a tool like meshmixer

If you don't know how to do that and can't effort the files drop me an email: 3dw@printschnitzel.at

Please take note:

- Use 4 perimeters
- Before printing please make sure to print the file Testprint-2-2.stl first

- If the hinges are welt together it helps to set a horizontal expansion (Cura) or XY- size compensation (Slic3r) of up to -0.1. Don't go much smaller because it weakens the hinges.

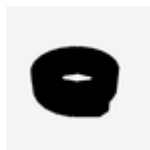
Find your size:

The number at the end of the file name is the length of the belt in millimeters measured from the hooks to the middle (the 3rd) element with the corresponding grooves. In short: The number should be close to your hips measurement. Please measure your hips where you wear your belt. Do not convert your usual belt length because it often turns out to be too short.

Model files



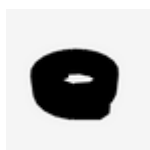
belt_version_22_1213.stl



belt_version_22_1150.stl



belt_version_22_1099.stl



belt_version_22_1042.stl



belt_version_22_0985.stl



belt_version_22_0928.stl



belt_version_22_0871.stl



belt_version_22_0814.stl



belt_version_22_0757.stl



belt_version_22_0700.stl



color_mod_4-201-2.stl



schnalle-plane_2-2.stl



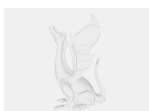
belt_900_22.stl



testprint-2-2.stl



schnalle-2-2.stl



belt_elements_printschnitzel.step



belt_adjustable_size.scad

License ©

This work is licensed under a
Creative Commons (4.0 International License)



Attribution-ShareAlike

-
- ✗ | Sharing without ATTRIBUTION
 - ✓ | Remix Culture allowed
 - ✓ | Commercial Use
 - ✓ | Free Cultural Works
 - ✓ | Meets Open Definition