



Single Plate Print LEGO Skeleton (4:1) - Improved



maxelman

[VIEW IN BROWSER](#)

updated 23. 10. 2023 | published 23. 10. 2023

Summary

Fixes and improves various issues, easy one-plate print!

[Art & Design](#) > [Sculptures](#)

Tags: [halloween](#) [lego](#)

Want a skeleton all in one go? This one-plate print will get you there. Only the skull needs supports. The rest attaches with glue and 1.75mm filament as a peg/joining system.

The face prints without supports and snaps right into place. If any pieces don't fit right you can adjust X-Y contour compensation.

I've printed a half dozen of these and I'm happy to answer any questions!

This remix is based on



Single-Print Mega Lego-like Skeleton

by rtm



Easy Print Mega Lego Skeleton Skull

by maxelman



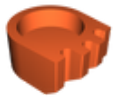
Mega Lego-like Skeleton (10:1 scale)

by Julia Ebert

Model files



face.stl



foot.stl



hand-v2.stl



arm-v2.stl



skull.stl



leg-v2.stl

arm-mirror-v2.stl



torso-v2.stl



legoskeleton-10-larger.3mf



License ©

This work is licensed under a
[Creative Commons \(4.0 International License\)](#)



Attribution—Noncommercial—Share Alike

- ✗ | Sharing without ATTRIBUTION
- ✓ | Remix Culture allowed
- ✗ | Commercial Use
- ✗ | Free Cultural Works
- ✗ | Meets Open Definition