



Gravity Knife V1



O-gami

[VIEW IN BROWSER](#)

updated 21. 4. 2023 | published 21. 4. 2023

Summary

Gravity Knife V1 (Reate exo gravity knife clone)

[Gadgets](#) > [Other Gadgets](#)

Fully 3d printed replica of the Reate exo gravity knife.

I would recommend printing both halves of the blade, the blade pins and blade insert at 0.1mm layer height and everything else can be printed at 0.2mm.

All of the files are orientated for the best results.

Video of how it works:

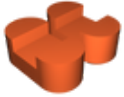
<https://www.youtube.com/shorts/Dh6n3iah2aM>

Assembly

- Attach the latch to the handle with the both the back pins gluing the back pins together
- Put the blade together by gluing both halves with the blade insert to help align them
- Test the tolerances between the blade and the handle first before gluing the blade pins on.(if you need, sand the blade down a tiny bit for a nicer fit.)

- Finally glue the blade pins onto the blade, putting them through the track in the handle.

Model files



blade-pin-x2.obj



latch.obj



blade-a.obj



blade-insert.obj



handle.obj



back-pin-2.obj



back-pin-1.obj



blade-b.obj

Other files



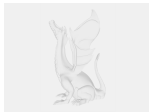
back-pin-1.mtl



back-pin-2.mtl



blade-a.mtl



blade-b.mtl



handle.mtl



latch.mtl



blade-insert.mtl

License ©

This work is licensed under a
Creative Commons (4.0 International License)



Attribution—Noncommercial—Share Alike

- ✗ | Sharing without ATTRIBUTION
- ✓ | Remix Culture allowed
- ✗ | Commercial Use
- ✗ | Free Cultural Works
- ✗ | Meets Open Definition

