



## Just Another Small Parts Tray



DrPrintsALot

[VIEW IN BROWSER](#)

updated 6. 6. 2022 | published 6. 6. 2022

### Summary

These fit under the extrusions on an Ender 3 Pro, which is why I designed them.

[3D Printers](#) > [Accessories](#)

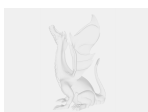
Tags: [ender3](#) [smallparts](#) [tool](#) [tooltray](#) [tray](#)

I had moved my electronics all to the back on my original Ender 3 Pro and wanted to use the new space, hence these tool trays. Nothing particularly fancy but they've stood the test of time.

.step included in case you'd like to tinker.

Enjoy!

### Model files



**tooltray.step**



**smallpartstray.step**

---



**tooltray.stl**

☐ No divisions

---



**smallpartstray\_short.stl**

☐ Slightly shorter z-height than the other one

---



**smallpartstray.stl**

☐ With divisions

## License ©



This work is licensed under a  
**Creative Commons (International License)**

**Public Domain**

---

- ✓ | Sharing without ATTRIBUTION
- ✓ | Remix Culture allowed
- ✓ | Commercial Use
- ✓ | Free Cultural Works
- ✓ | Meets Open Definition