



Pokémon Chess Set



Raphael Schaaf

[VIEW IN BROWSER](#)

updated 14. 5. 2020 | published 20. 4. 2020

Summary

A Pokémon chess set that I originally created for a friends birthday. For advanced printers.

[Toys & Games](#) > [Board Games](#)

Tags: [pokemon](#) [chess](#) [chessset](#) [chesspieces](#)

A Pokémon chess set that I originally created for a friends birthday. For advanced printers.

The base of the figures is hollow and can be filled with nuts (M8 at 100% size, M6 at 75% size) to make the figures more bottom heavy and less likely to fall over.

Print instructions

Good luck ;)

Model files



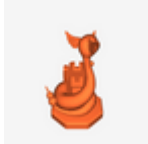
pokeball_base_b.stl



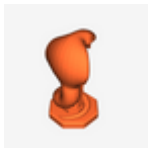
pokeball_base_e.stl



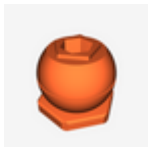
queen_nidoqueen.stl



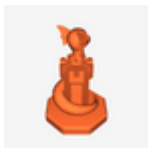
rook_dragonair.stl



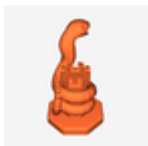
rook_arbok.stl



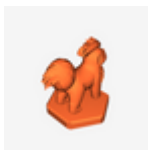
pokeball_base_d.stl



rook_dratini.stl



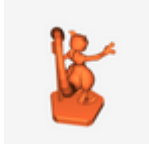
rook_ekans.stl



bishop_growlithe.stl



bishop_ninetales.stl



king_mewtwo.stl



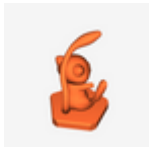
king_nidoking.stl



pokeball_base_a.stl



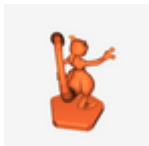
pokeball_base_c.stl



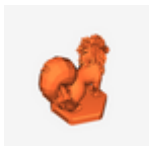
queen_mew.stl



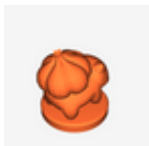
bishop_vulpix.stl



king_mewtwo_no_supports.stl



bishop_arcanine.stl



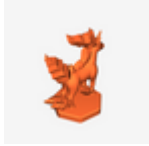
pawn_bulbasaur.stl



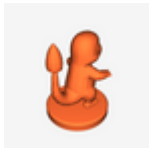
knight_seadra.stl



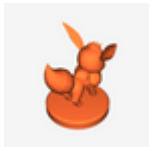
knight_horsea.stl



knight_rapidash.stl



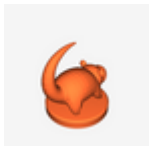
pawn_charmander.stl



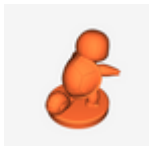
pawn_eevee.stl



pawn_jigglypuff.stl



pawn_slowpoke.stl



pawn_squirtle.stl



pokeball_base_2.stl



pokeball_base_1.stl



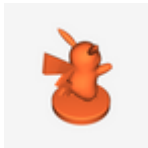
pawn_psyduck.stl



pokeball_base_3.stl



pokeball_base_5.stl



pawn_pikachu.stl



pokeball_base_4.stl



pokeball_base.stl



knight_ponyta.stl

License

This work is licensed under a
[Creative Commons \(4.0 International License\)](https://creativecommons.org/licenses/by-nc-sa/4.0/)



Attribution—Noncommercial—Share Alike

- ✘ | Sharing without ATTRIBUTION
- ✓ | Remix Culture allowed
- ✘ | Commercial Use
- ✘ | Free Cultural Works
- ✘ | Meets Open Definition